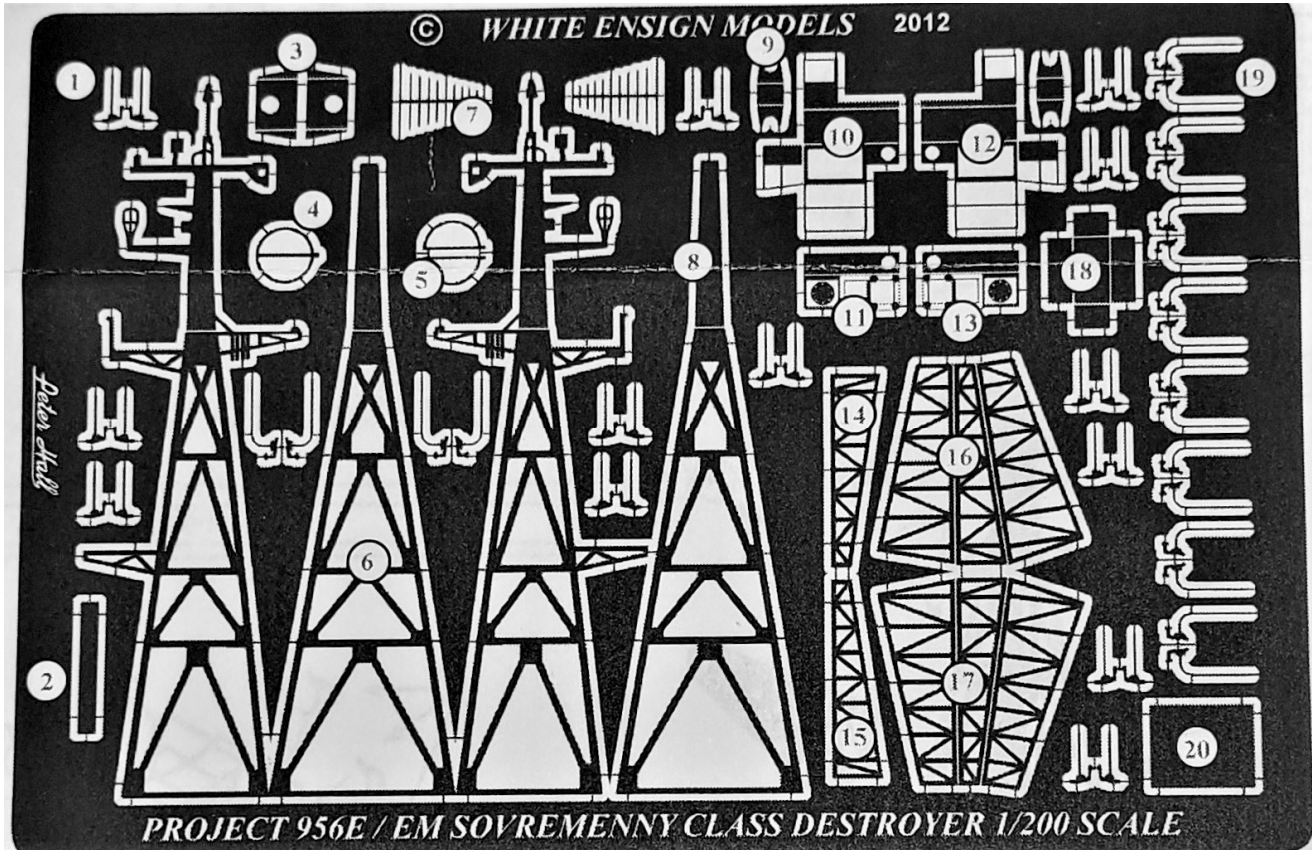


WHITE ENSIGN MODELS

Project 956E-EM Sovremenny Class Destroyer

Photoetched metal upgrade set for the Trumpeter 1/200 scale Kits - PE 2006

(This is a re-scribed copy of the original text to make the reading better when building your kit – all copyrights to the designer and producer)



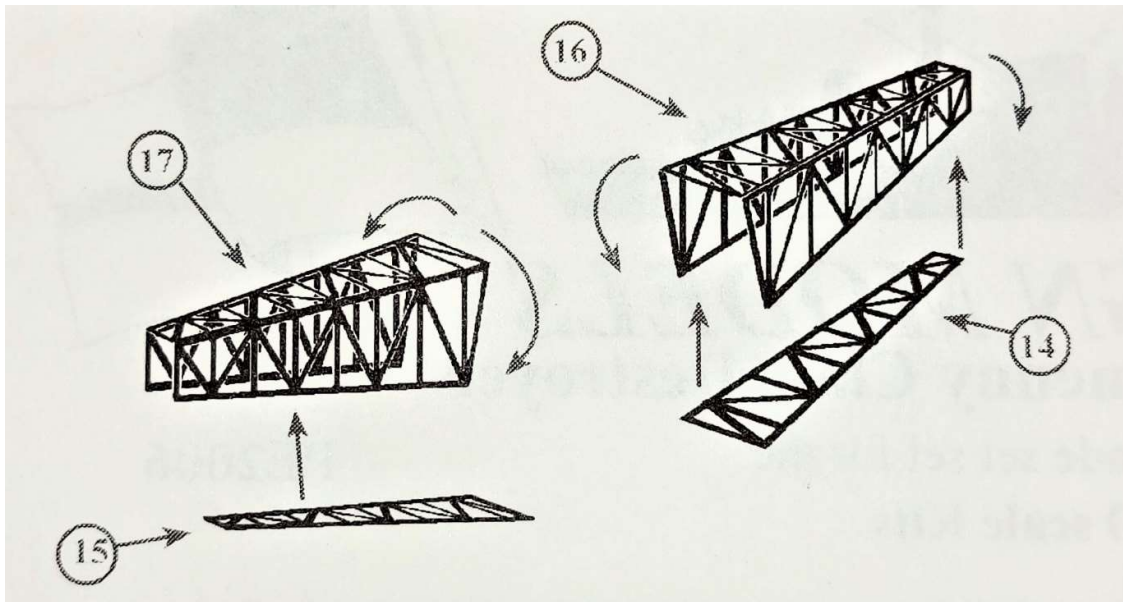
1. RBU Tube Fuzing Cable
2. Mainmast Top Platform
3. Mainmast Radome Platforms
4. DF Loop Antenna
5. DF Antenna Side Loops
6. Mainmast Rear and Side Lattices
7. UHF Antennas
8. Mainmast Front Lattices
9. Unrep Jib Mounting Bracket
10. Unrep Platform (Port)

11. Unrep Connection Plate (Port)
12. Unrep Platform (Starboard)
13. Unrep Connection Plate (Starboard)
14. Yardarm Lattice Lower Frame (Port)
15. Yardarm Lattice Lower Frame (Starboard)
16. Yardarm Lattice (Port)
17. Yardarm Lattice (Starboard)
18. UHF Antenna Box
19. RBU Fuzing Cables
20. UHF Antenna Platform

General Instructions

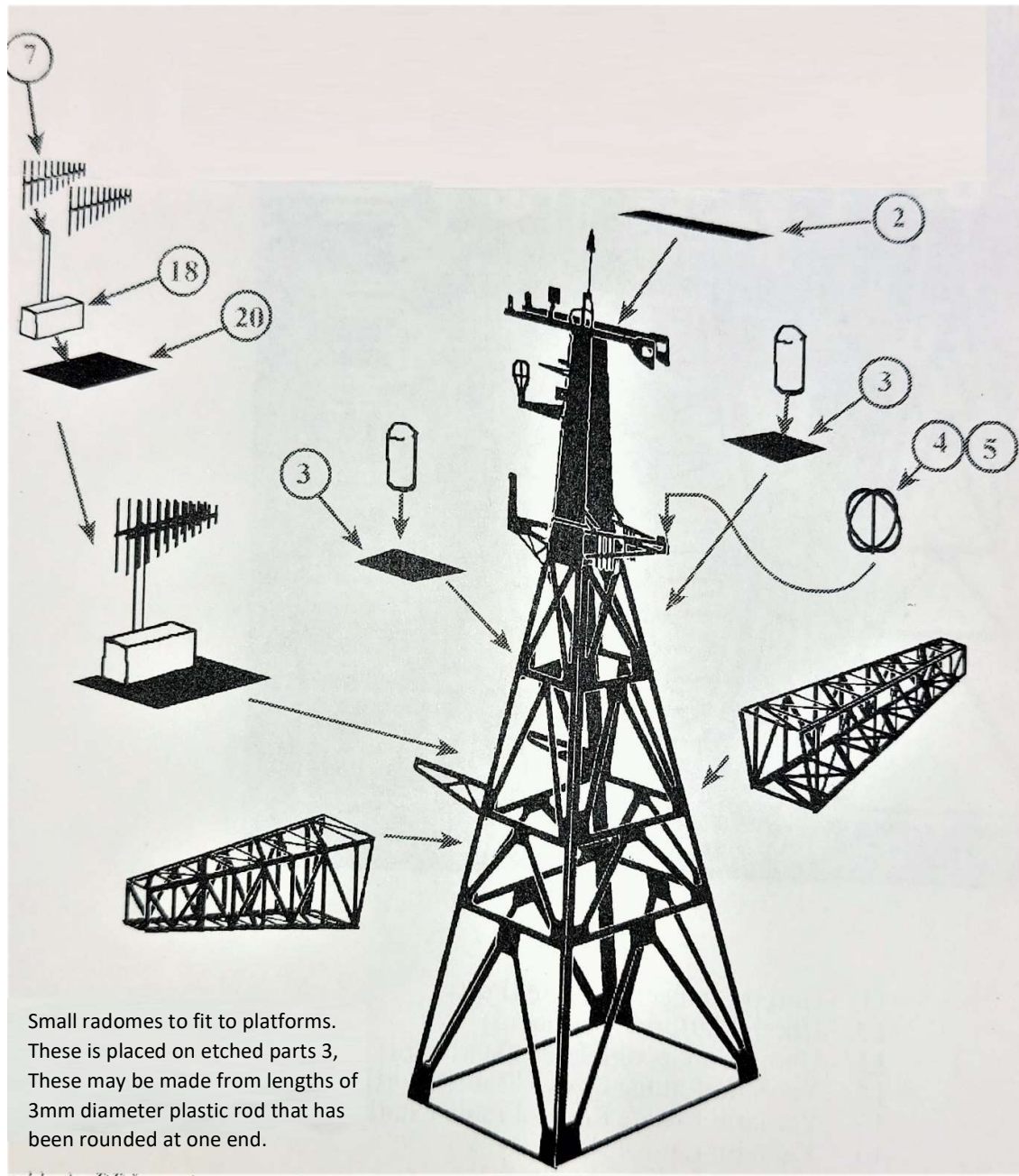
1. Do not remove the etched parts from the fret until you are ready to use them.
2. Before assembly, soak the etched parts in a suitable solvent, such as white spirit, to de-grease the surfaces for painting.
3. Cyanoacrylate adhesive (super glue) or contact adhesive such as Elmers white glue may be used. These can be applied with a pin or piece of stretched sprue.
4. When removing parts from the fret, place the fret on a hard surface, such as a smooth ceramic tile, in order to prevent parts bending whilst cutting through the holding tabs. It is suggested that a #11 type of modelling knife blade is used for this purpose.
5. When shaping or bending a part, a straight edged blade such as a chisel blade #17 or # 18 will give a good sharp corner. or alternatively a small pair of smooth jawed pliers may be used.
6. If a part is bent incorrectly, lay it on a hard flat surface and roll it flat with a cylindrical object such as a modelling knife handle.
7. It is suggested that rails are pre-measured, where practical, using a pair of compass dividers and then tacked to the deck edge every third or fourth stanchion with a small drop of glue. When a section is complete, run a thin line of glue along the inside edge to attach it firmly to the deck.

956E MAINMAST YARDARM ASSEMBLY



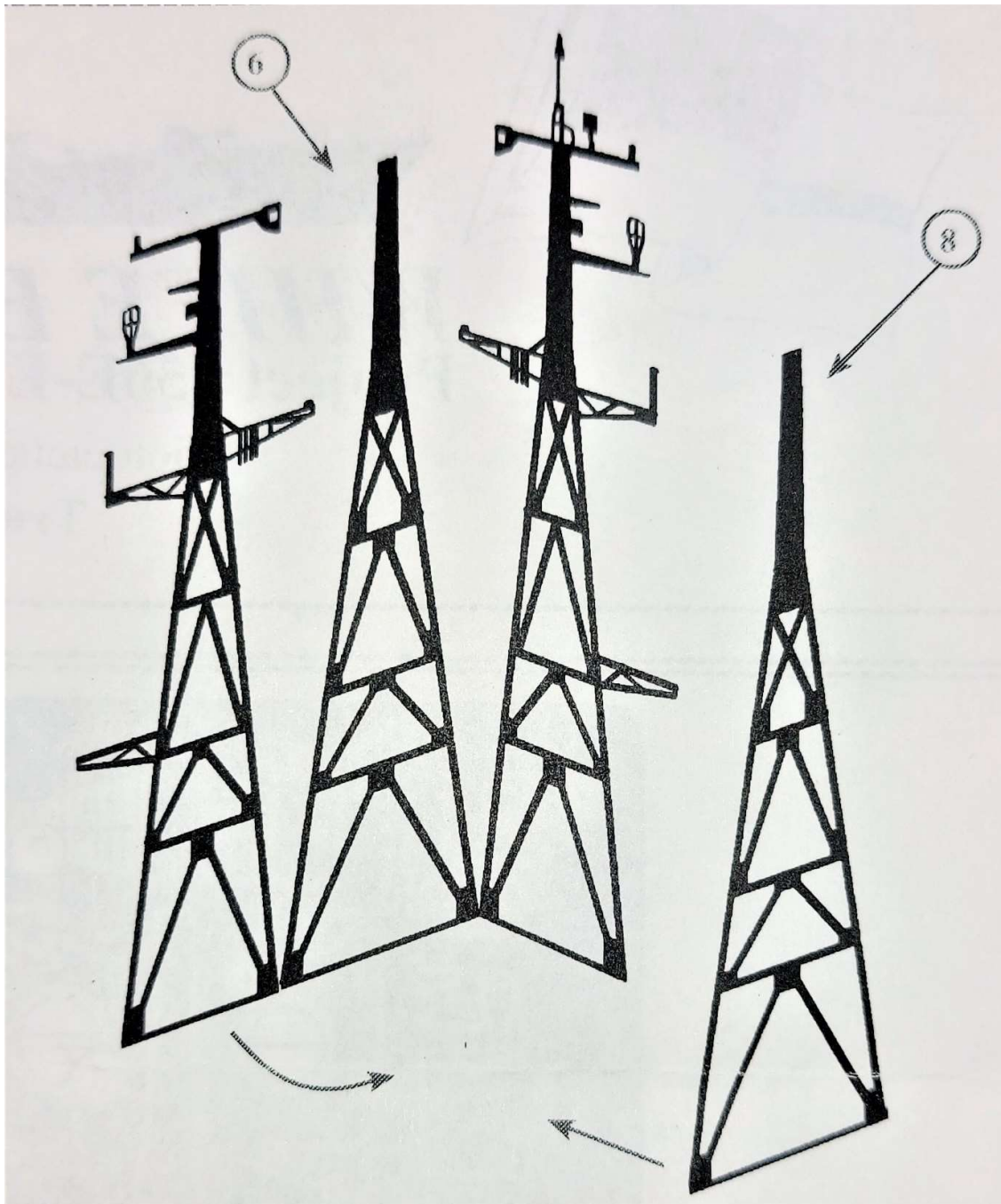
1. To assemble the yardarms, first fold the side frames on each of the etched parts 16 and 17, down to 90 degrees so that they are parallel.
2. Then fit the lower frames, etched parts 14 and 15 so that the edges of the frames locate with each other.
3. Secure into place.

956E MAINMAST PARTS LOCATION



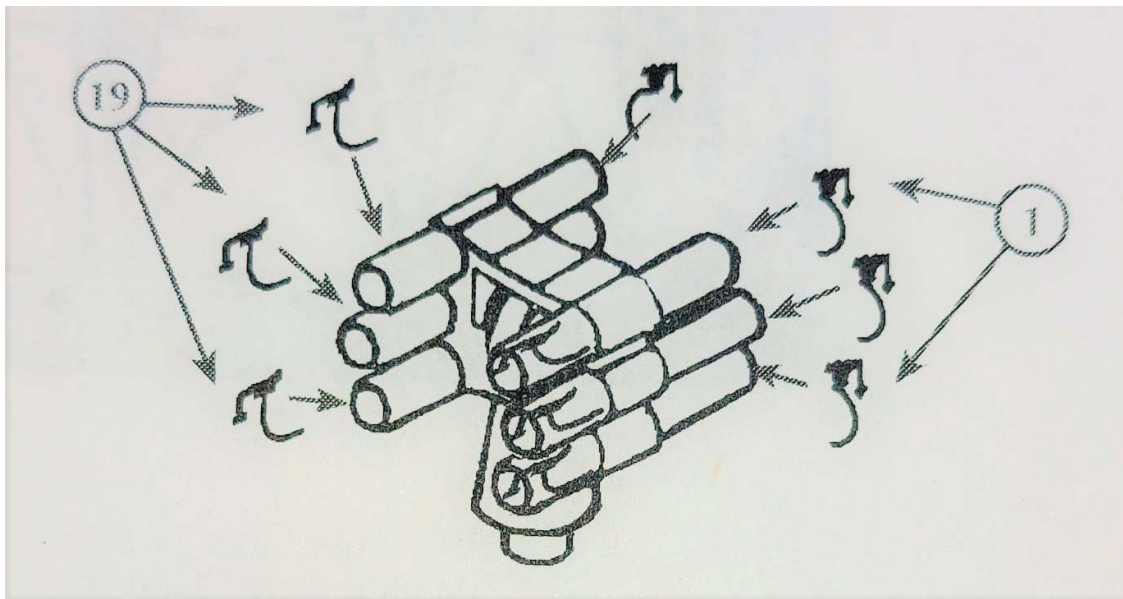
Small radomes to fit to platforms.
These is placed on etched parts 3,
These may be made from lengths of
3mm diameter plastic rod that has
been rounded at one end.

1. Fit the top platform, etched part 2 as shown below. in between the antenna arrays. Fold down the sides of the small radome platforms, etched parts 3, so that they are parallel, then fit the platforms to each side of the mast on the upper horizontal bar.
2. Fold the sides and end panels of etched part 18 down to 90 degrees so that it makes a box.
3. Cut a 20mm length of 1mm diameter plastic rod and fit to the rear panel of the box and fit the complete assembly to the rear edge of the platform, etched part 20.
4. Fit this platform in between the two lower rear lattice support frames on the mast.
5. Fit the UHF antennas, etched parts 7, to each side of the pole as shown left.
6. Assemble the DF Loop Antenna, etched parts 4 and 5, by fitting the vertical bar on the half circles to each side of the vertical bar on the fully circular part, forming a cross when viewed from above.
7. Fit to the forward mast support frames which should be shaped so that the forward ends come together in a point, as should also the small antenna support frame immediately to the rear, and again with the small loop antenna directly above.
8. Fit the yardarm assemblies to each side of the mast between the lower and middle horizontal bars.



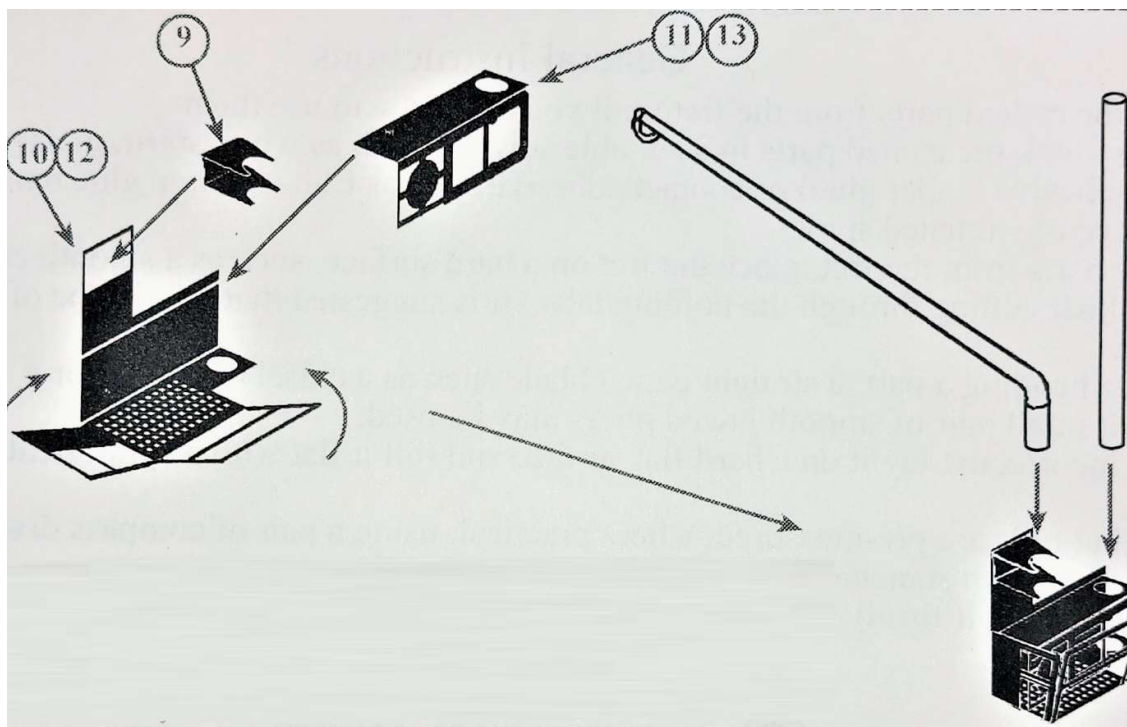
1. Assemble the mainmast by folding the side panels of etched part 6, around to 90 degrees. Shape the rear lattice frame and the side lattices, so that the edges of the mast panels locate together. Secure into place.
2. Shape and fit the mast front lattice panel, again so that the edges locate together.

RBU 1000 DETAILS



1. Fittings have been provided in this set to detail the barrels of the RBU 1000. This is not for the faint-hearted and will require a steady hand as the parts are "very" small.
2. Fit etched parts 19 to the outer ends of the barrels with the retaining catch over the hole. Feed the wire back along the side of the barrel and secure.
3. Fit parts 1 to the other end of the barrel. Wrap the wires around each side of the barrel as shown. Some spare parts have also been provided.

BOAT CRANE PLATFORM ASSEMBLY



Etched parts 10 & 12 have been provided to modify and correct the inaccurate boat crane provided in the kit

1. Fold the main platform as shown above and secure the railings into position.
2. Fold the UNREP/RASL connection plate to 90 degrees and fit to the etched line as shown.
3. Fold the crane boom bracket as shown and fit into the etched recess.
4. Cut the crane boom, the kit parts, so that they are divided as shown right. Fit into the platform assembly as shown.

(C) WHITE ENSIGN MODELS

8532 Lamar Drive, Huntington Beach, CA 92647 USA

E-mail: whiteensignmodels@aol.com

Website: <https://www.whiteensignmodels.com>