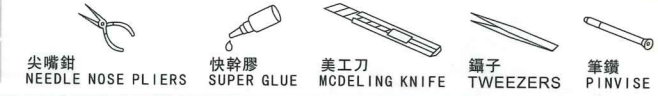


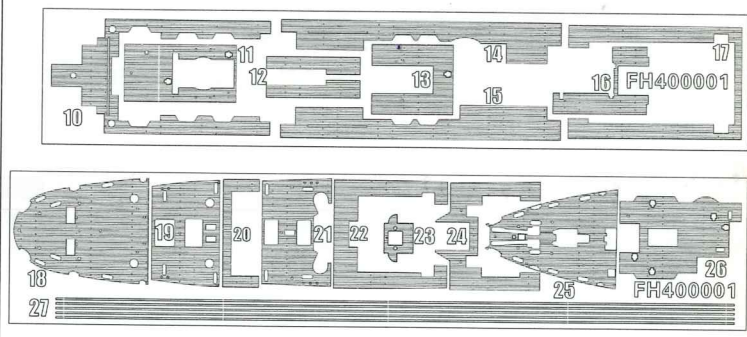
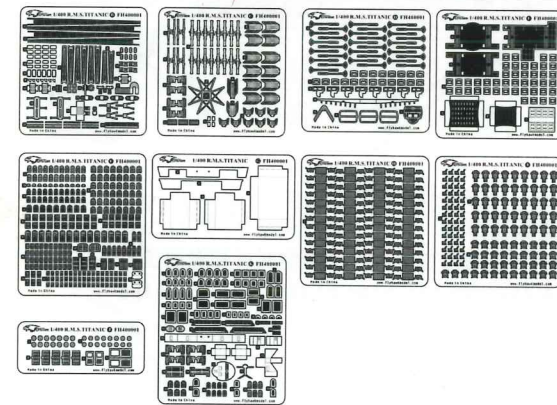
R.M.S. TITANIC 泰坦尼克號

蝕刻零件號 (PE Part NO.)	原零件號 (Original Part No.)	把孔填平 (File Hole)	另一側相同制作 (Same another side)
填充部分切除 (Cut the shadow)	鑽孔 (Make Hole)	折彎 (Sharp Bend)	卷曲 (Roll)
選擇 (Option)	替換原零件 (Replace Original part)	紅色向上折(Red up fold)	藍色向下折(Blue fold down)

推薦使用工具 RECOMMENDED TOOL



RE 1 X 8	RE 2 X 5	RE 3 X 11	RE 4 X 1	RE 5 X 2	RE 6 X 1	RE 7 X 1
RE 8 X 1	RE 9 X 2	RE 10 X 2	RE 11 X 15	RE 12 X 1	RE 13 X 6	RE 14 X 4
MB 1 X 44	MB 2 X 26					

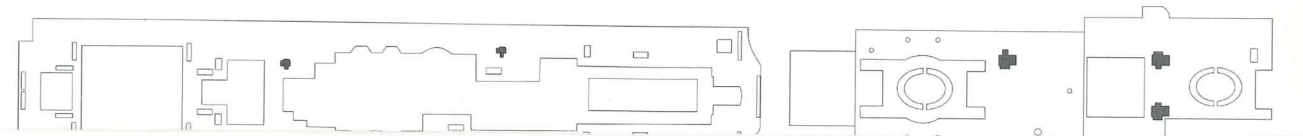


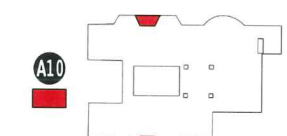
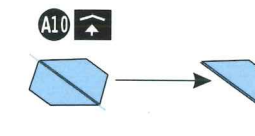
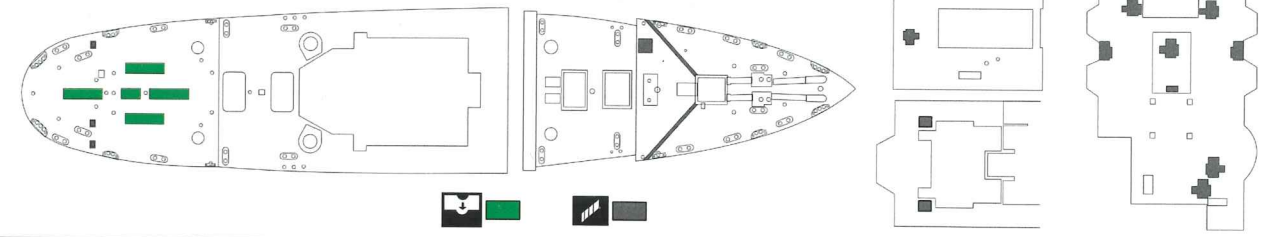
Web: <http://www.flyhawkmodel.com>

木甲板 WOODEN DECK

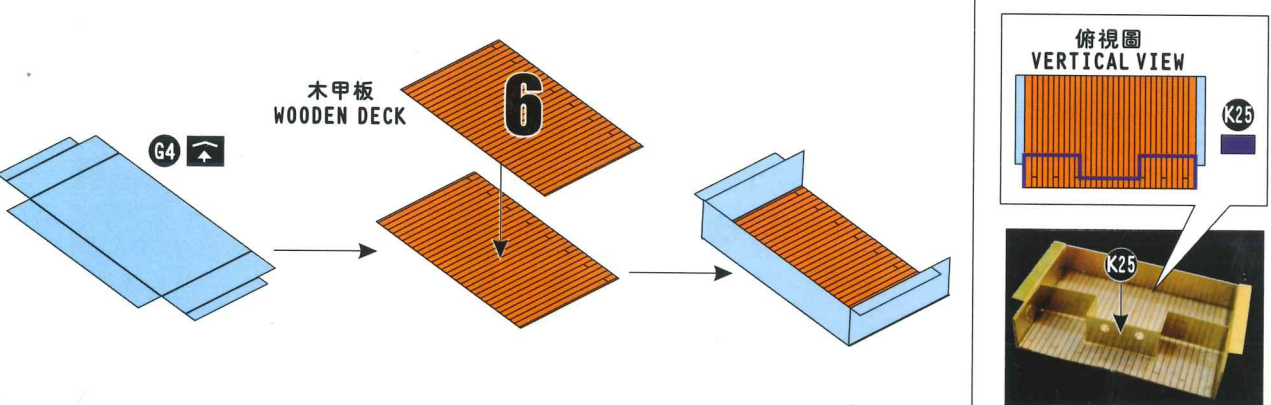
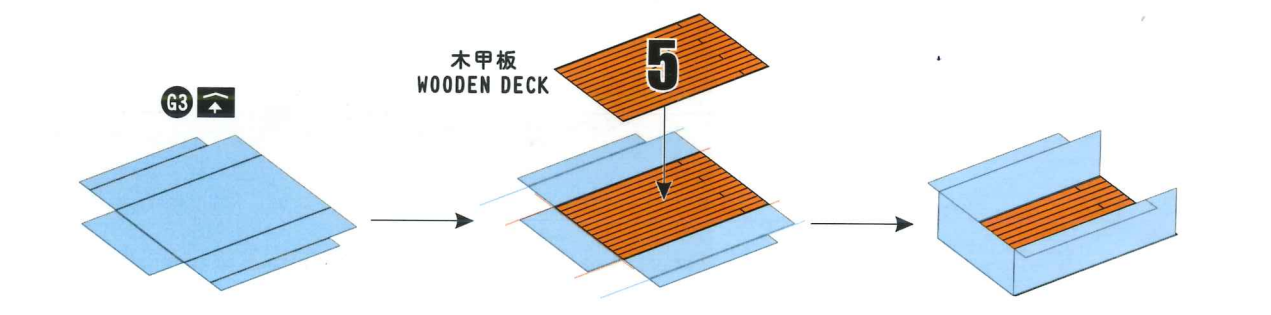
NOTE:
 .Please first see if the parts are complete.
 .Please read the instruction carefully before making it.
 .Don't put it in the high temperature or in the liquid.
 .Don't pulling, crimping or squeezing.
 .please use the glue carefully.

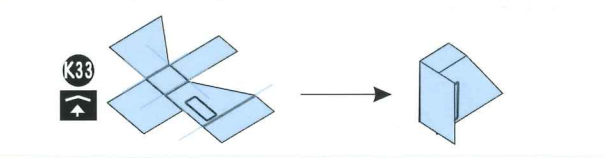
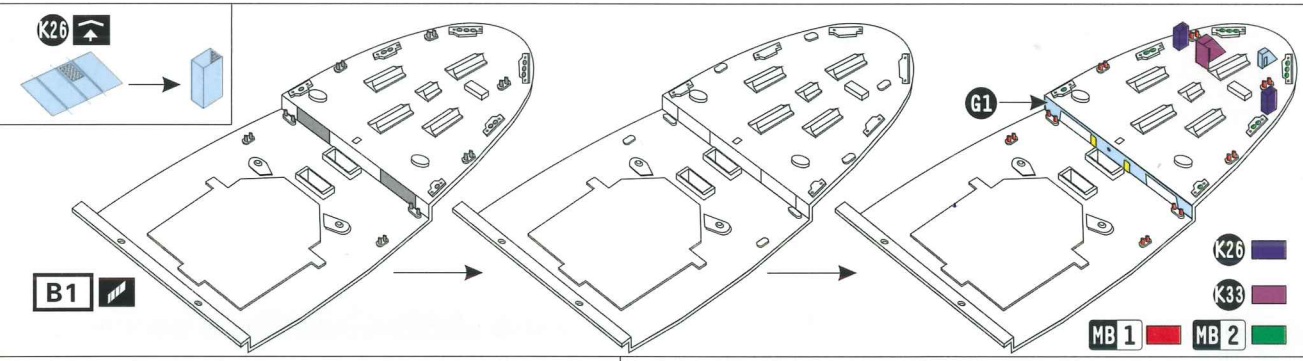
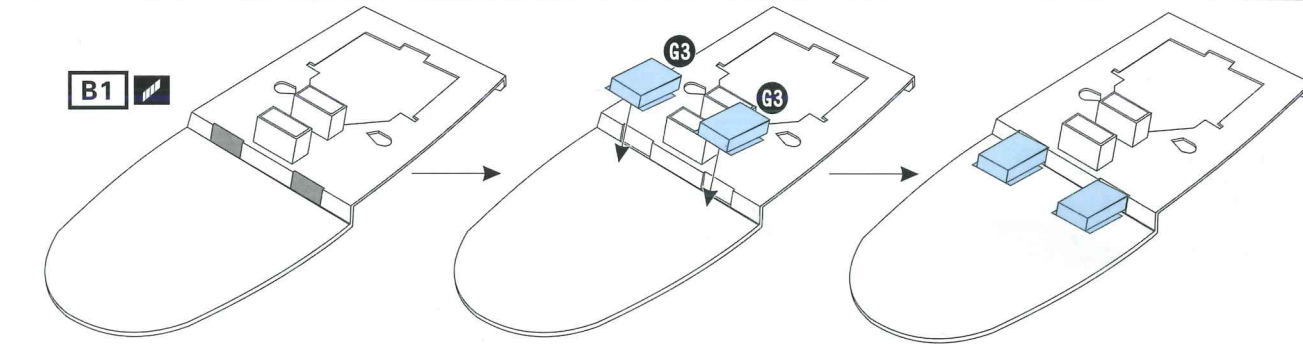
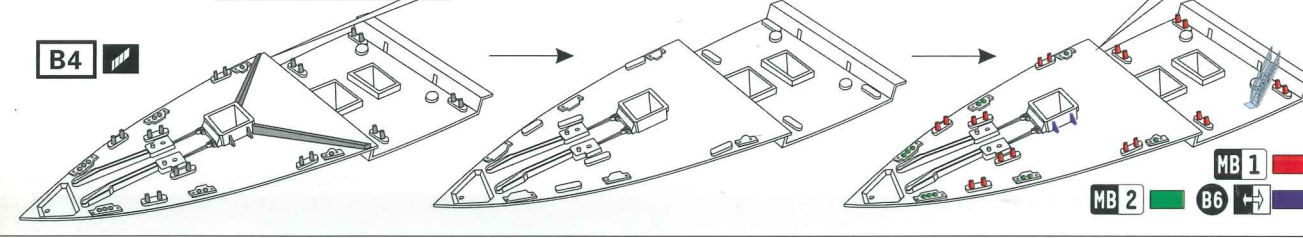
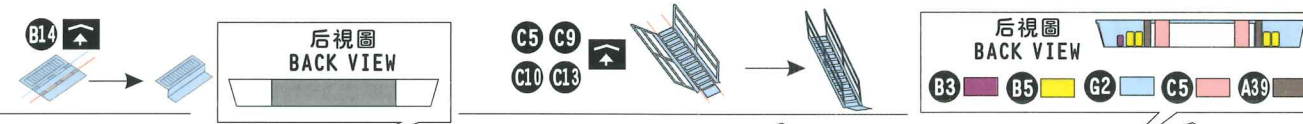
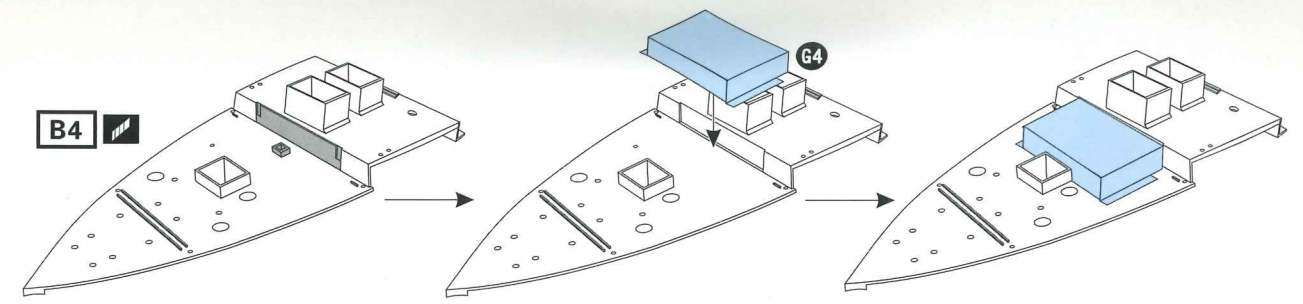
Note of Making PE:
 .Bend the red upward
 .Bend the blue downward
 .The white edge number is for the wooden deck number
 .The circle number is for PE part number



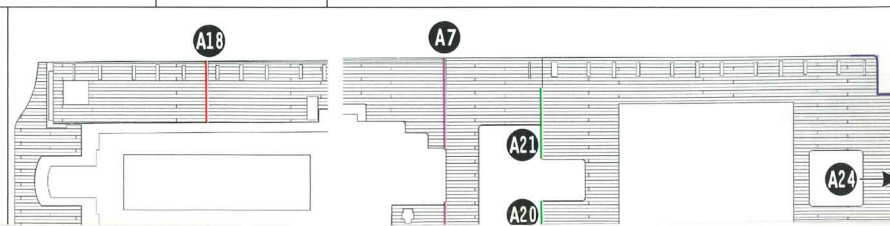
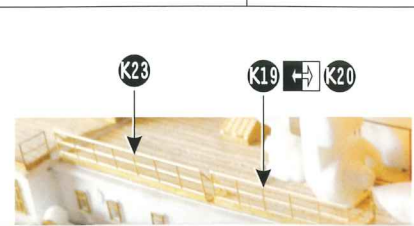
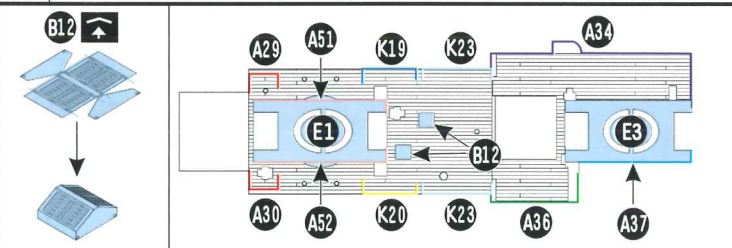
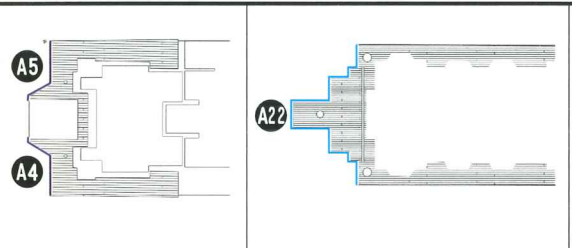


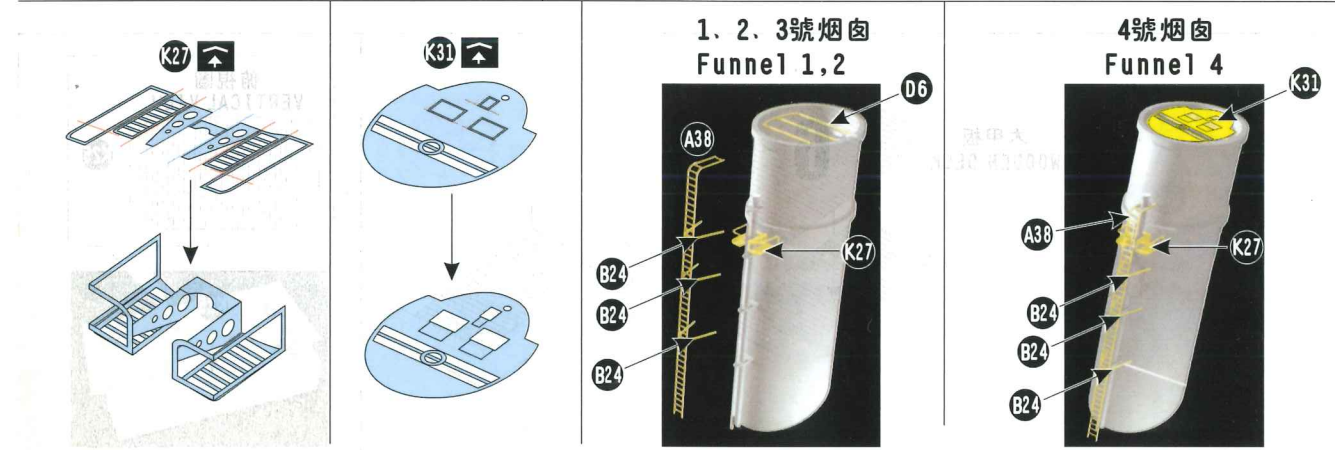
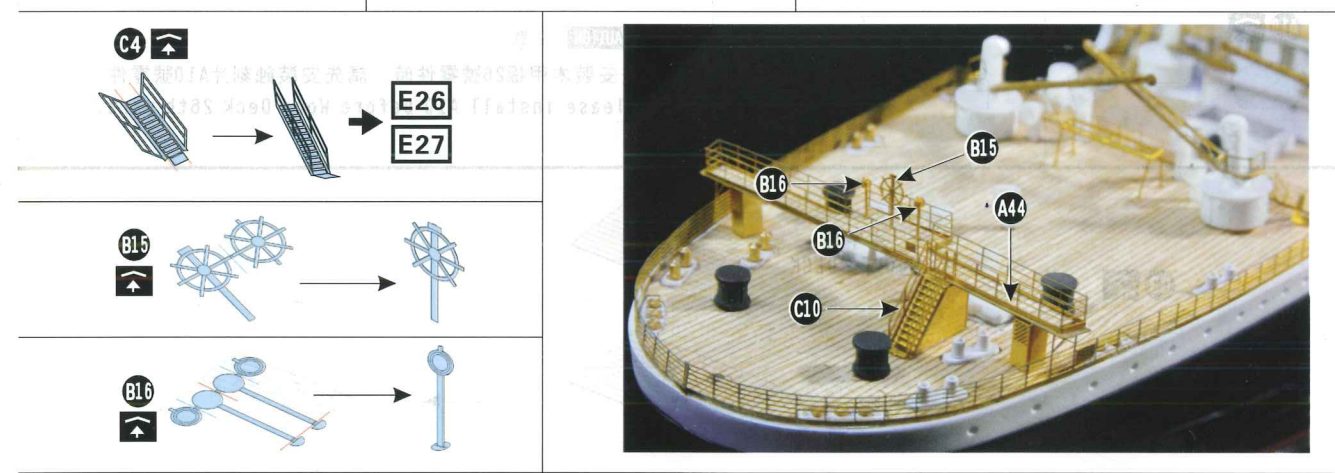
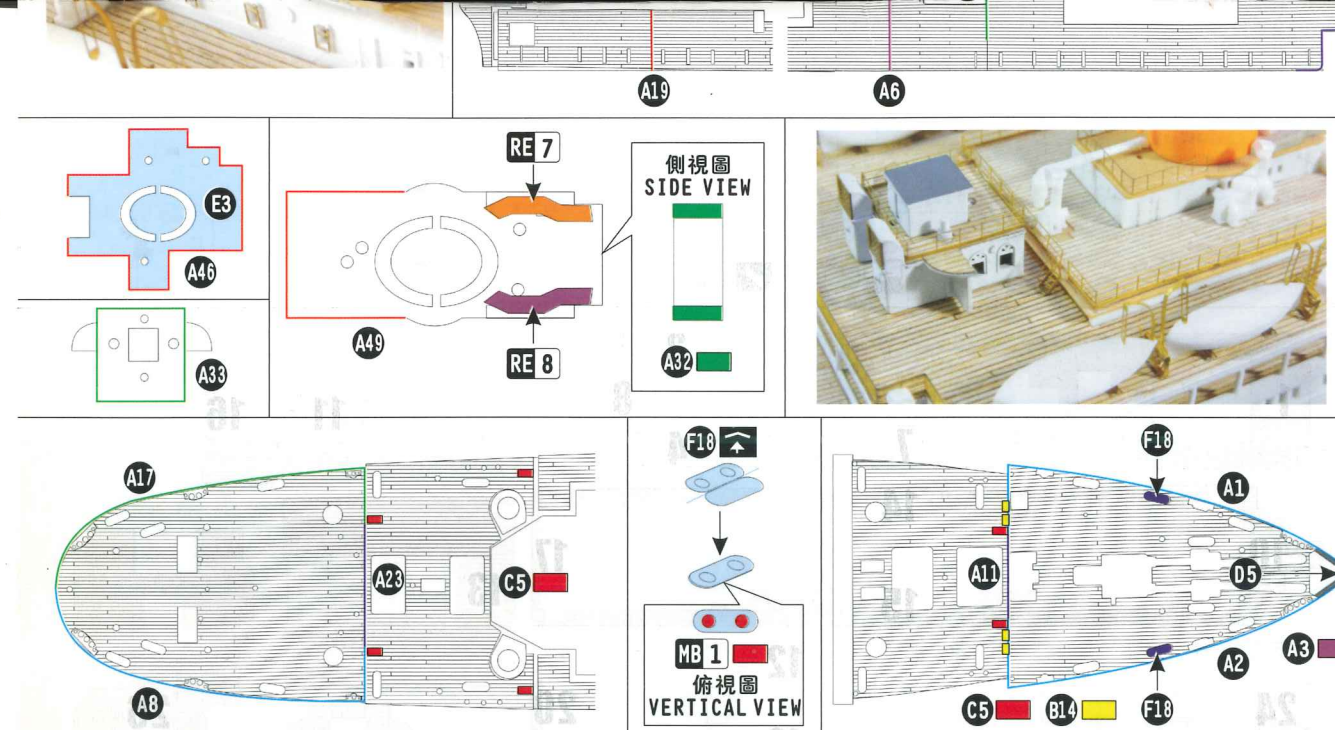
CAUTION 注意
 在安裝木甲板26號零件時，請先安裝蝕刻片A10號零件。
 Please install A10 before Wood Deck 26th part.





CAUTION 注意
 請根據G1和G2缺口處的大小切除塑料件相應的位置。
 Please cut off the same position according to the gap of G1 and G2.

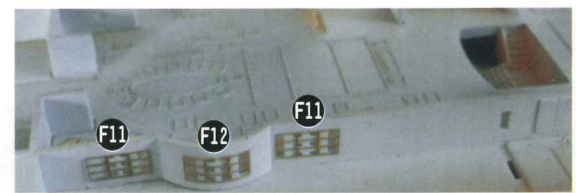
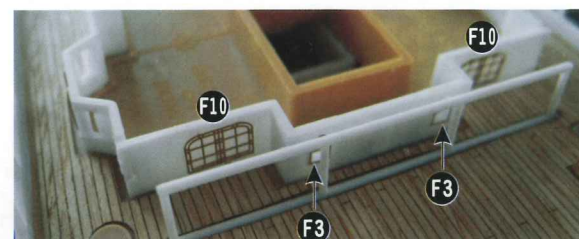
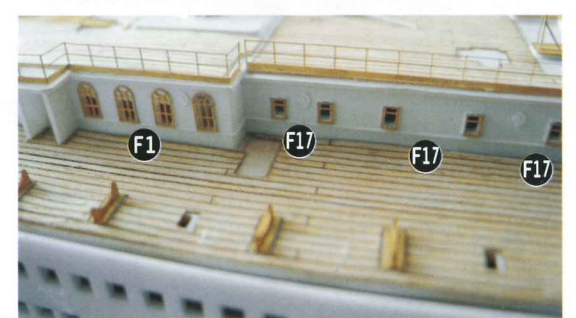
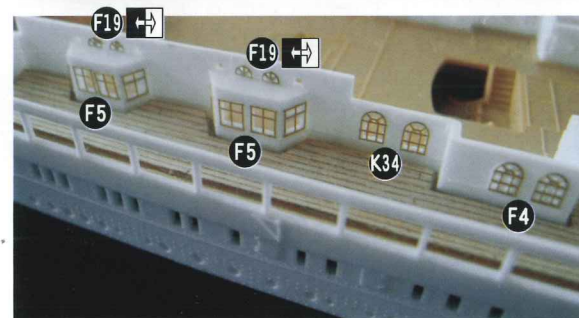
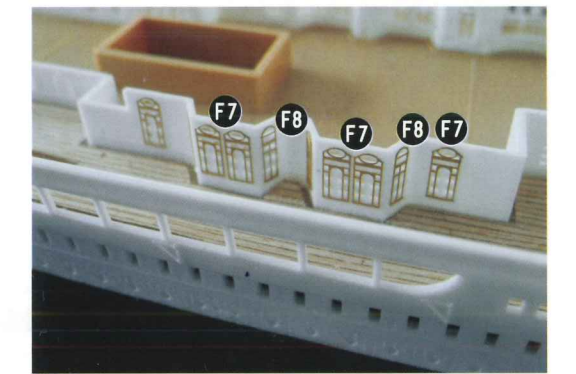
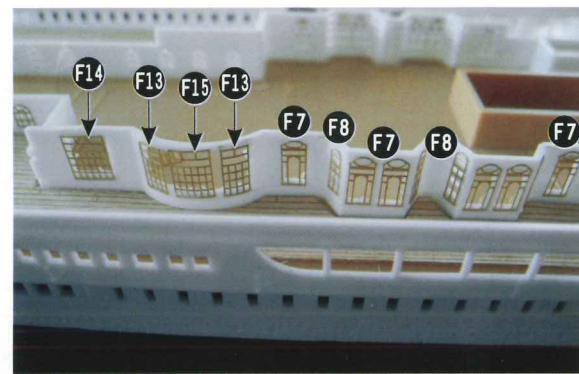
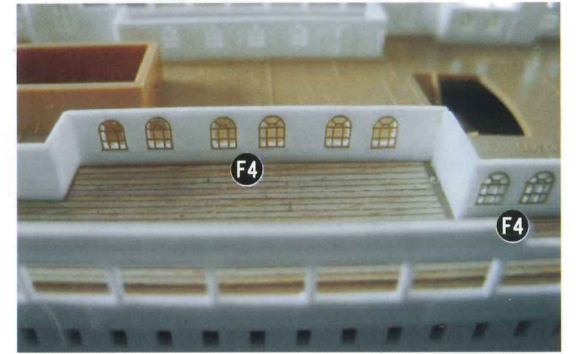
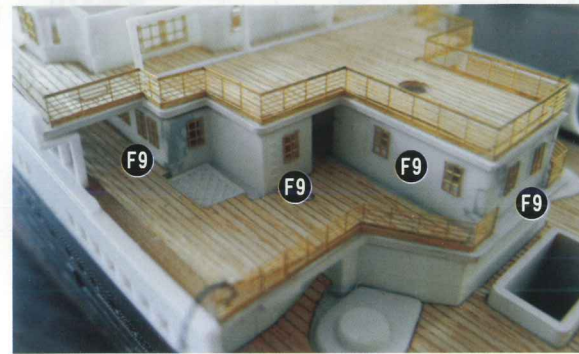
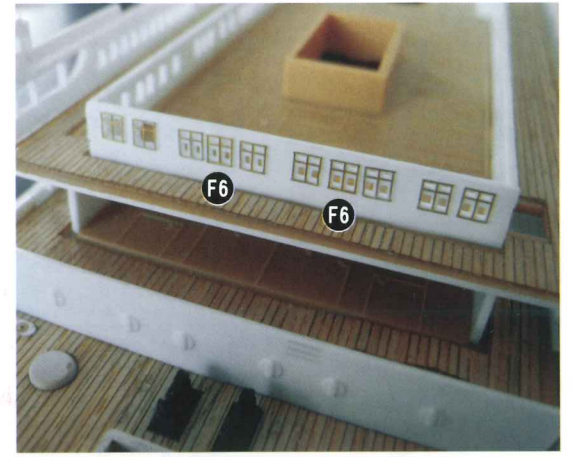
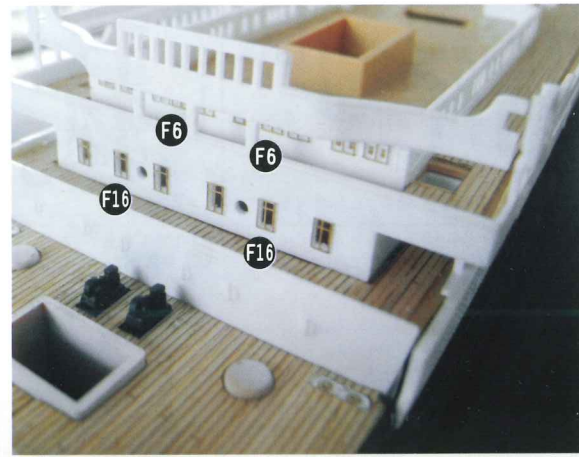


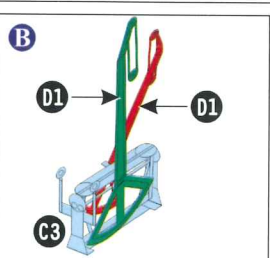
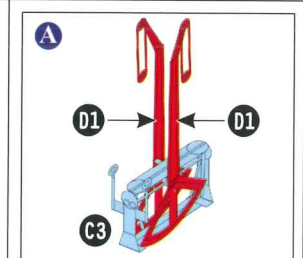
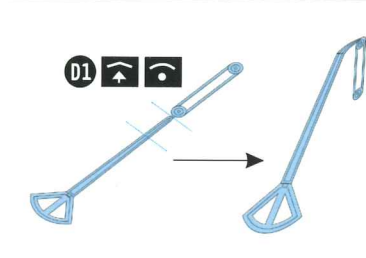
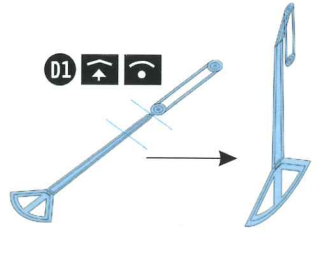
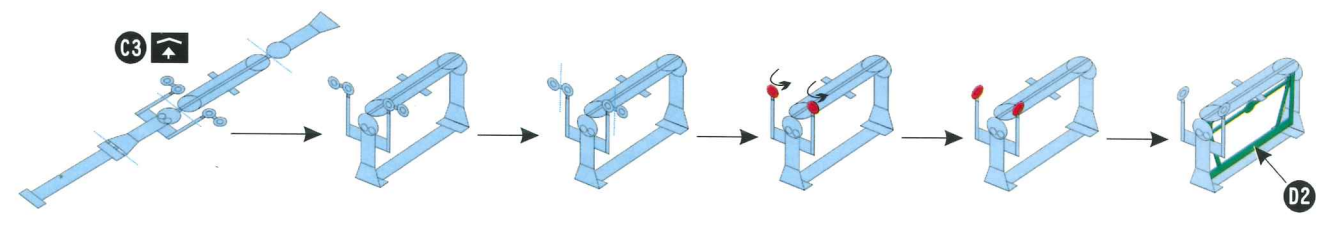
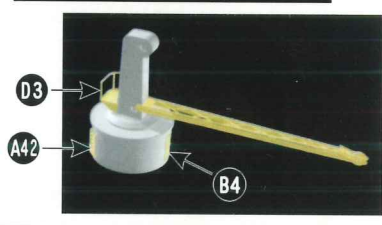
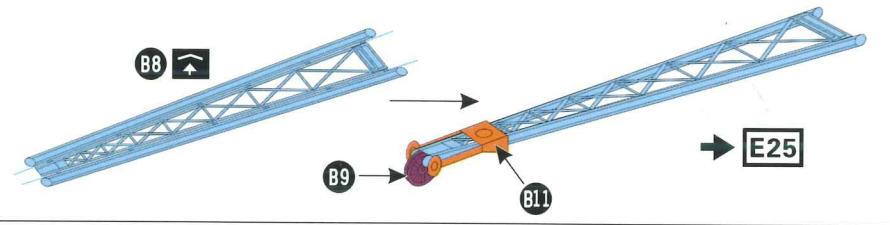
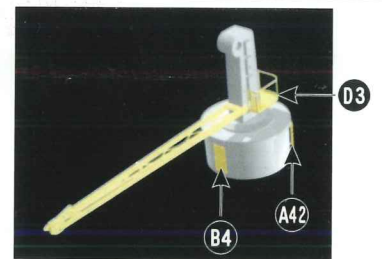
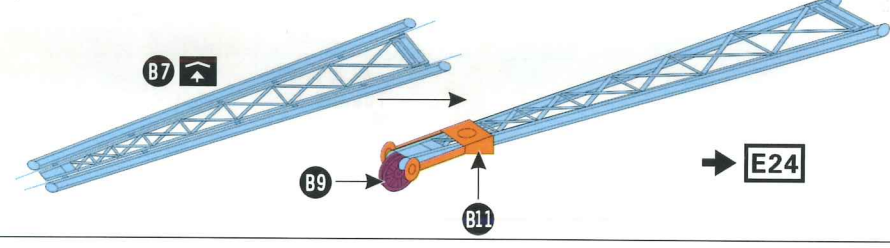
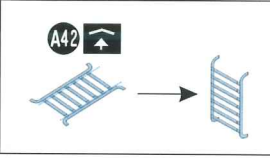
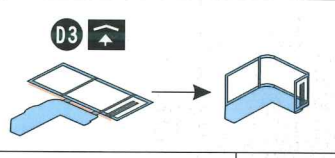
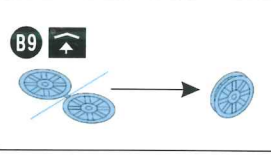
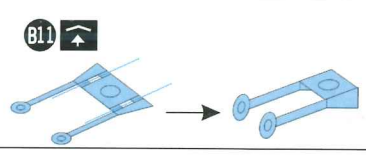
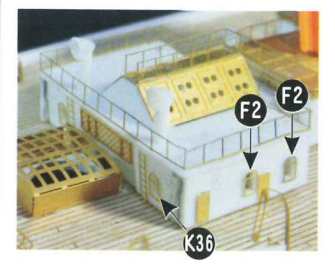
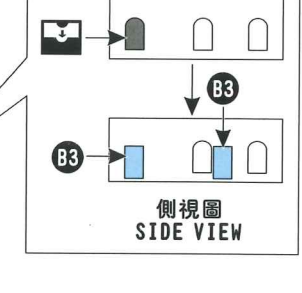
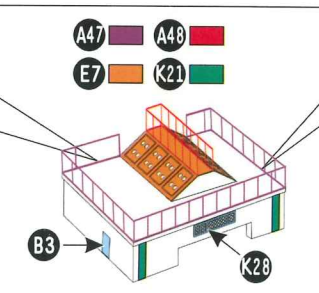
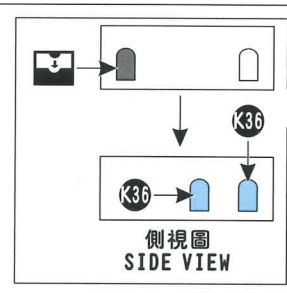


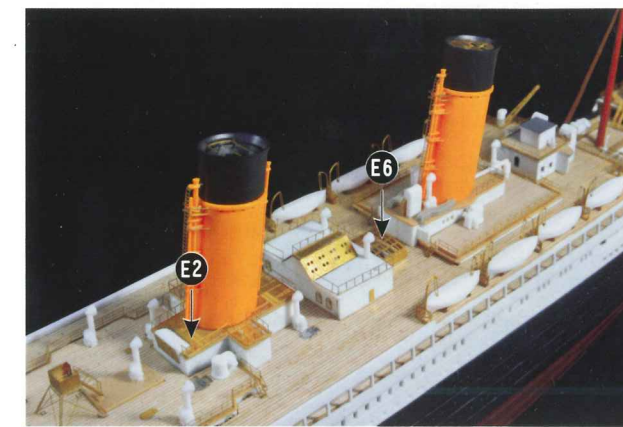
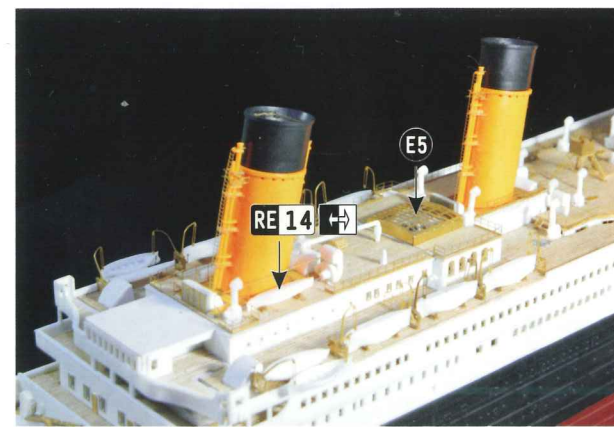
CAUTION 注意

在安裝窗戶和門時，可根據自己的需要決定是否切除塑料原件上的窗戶和門。

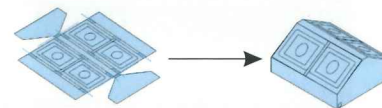
You can choose to cut off plastic windows and doors while installing pe ones.



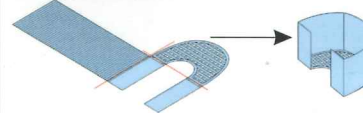




B10



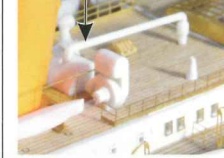
B17



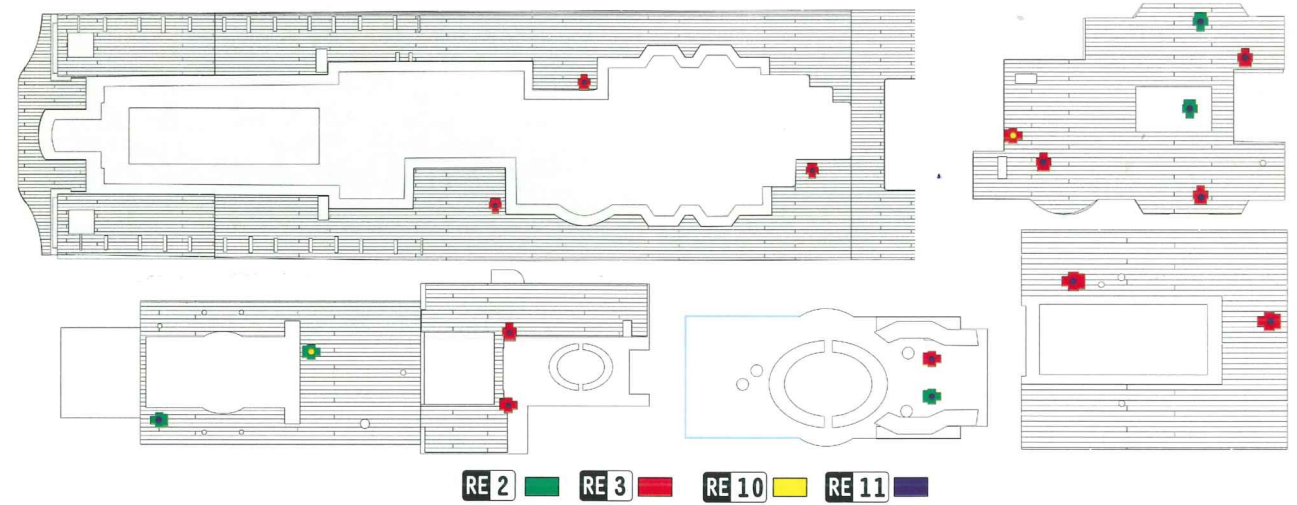
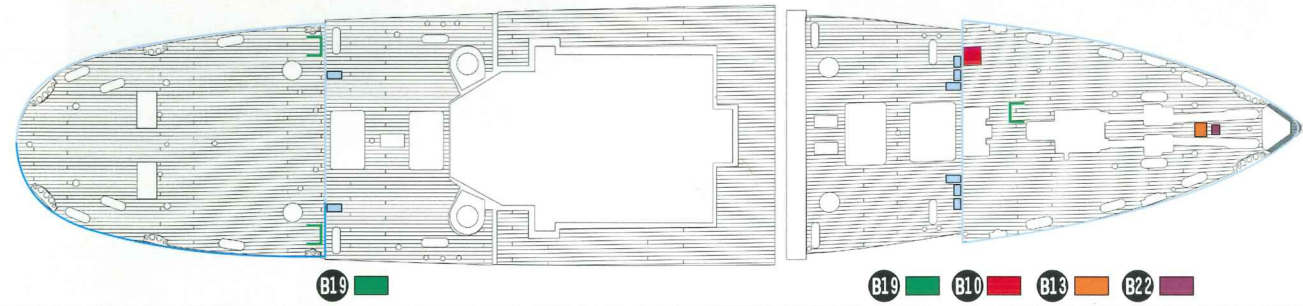
RE 4 → H7



RE 6 → E16



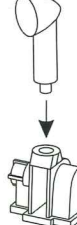
艦首方向
TOWARD BOW



CAUTION 注意

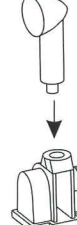
在安裝RE10和RE11時，請將出風口朝向艦尾。
When installing RE10 and RE11, Please put the air outlet toward stern.

RE 11



RE 2

RE 11



RE 3

RE 10



RE 2

RE 10



RE 3

? J1



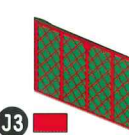
RE 1
RE 13

? J2

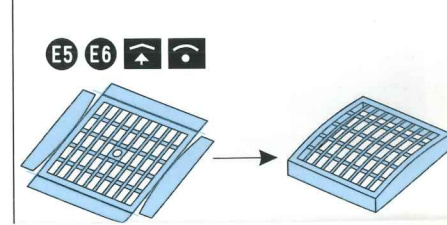
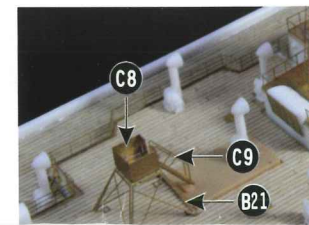
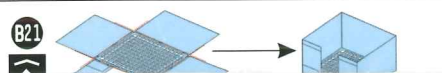
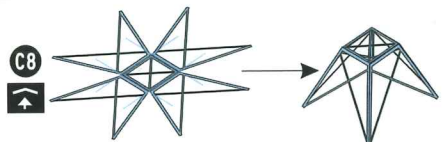
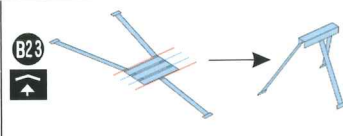
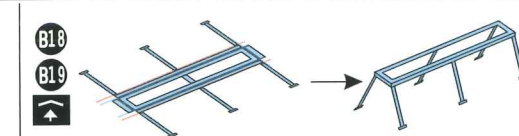
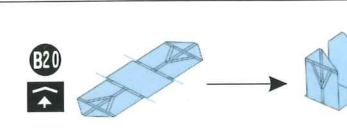
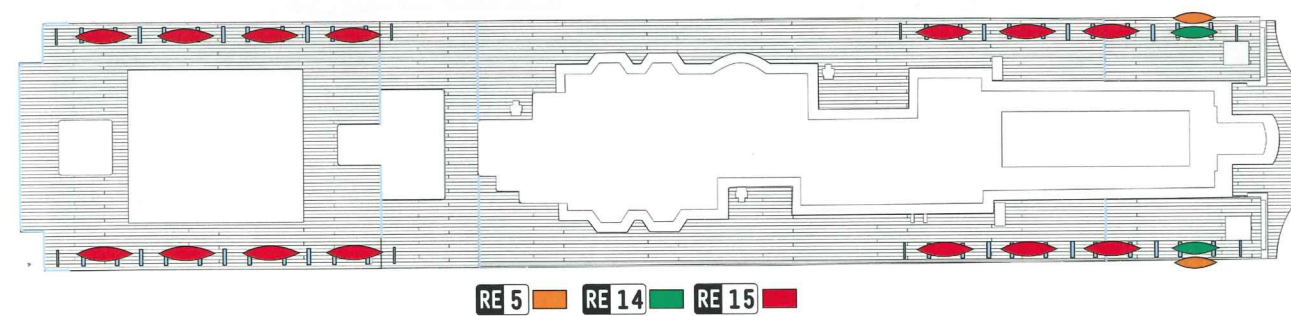
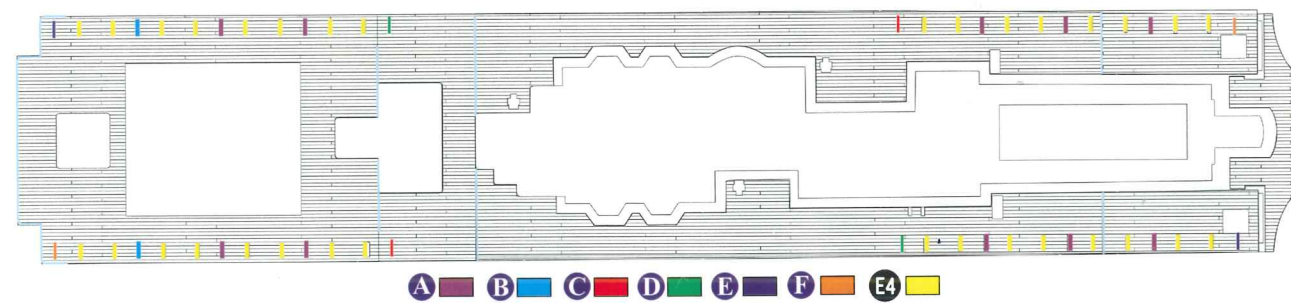
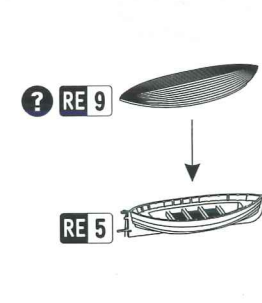
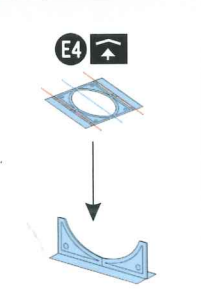
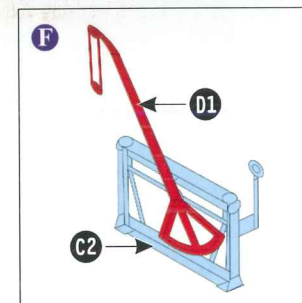
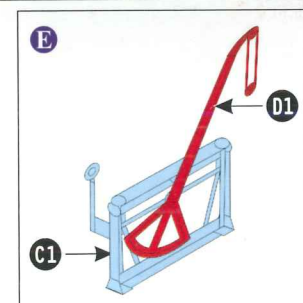
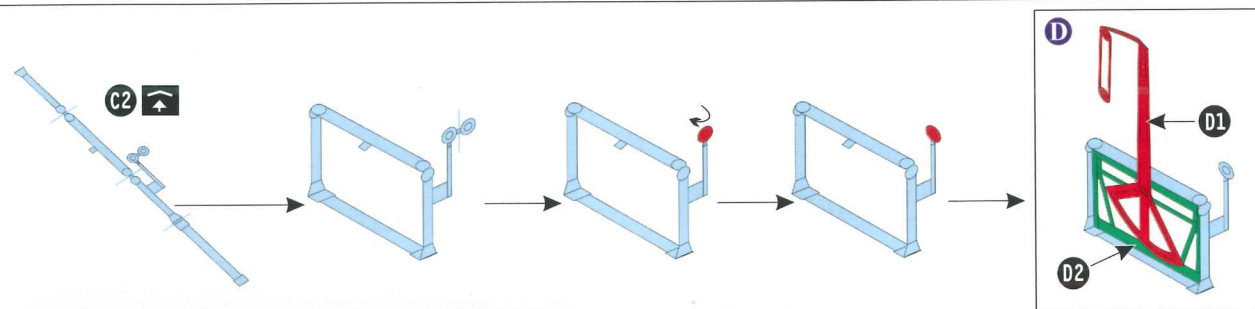
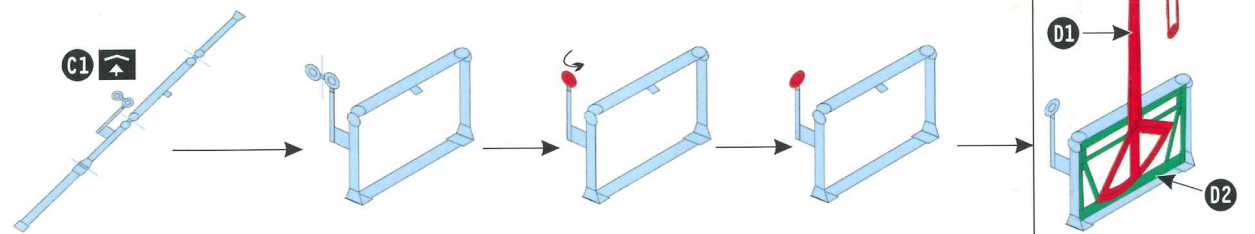


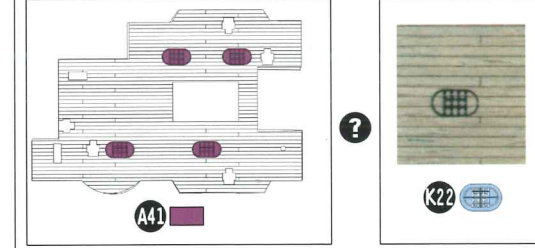
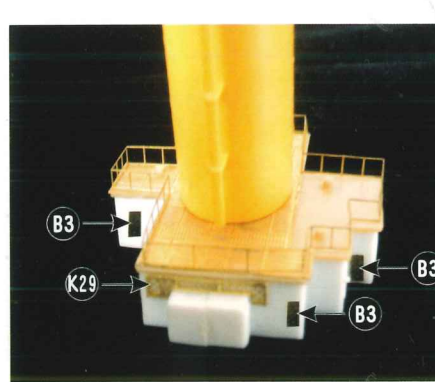
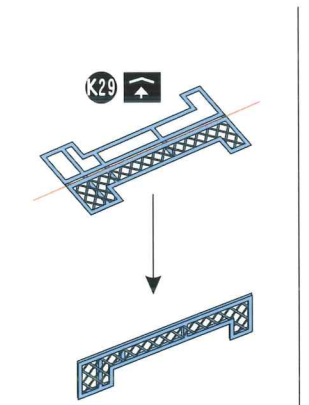
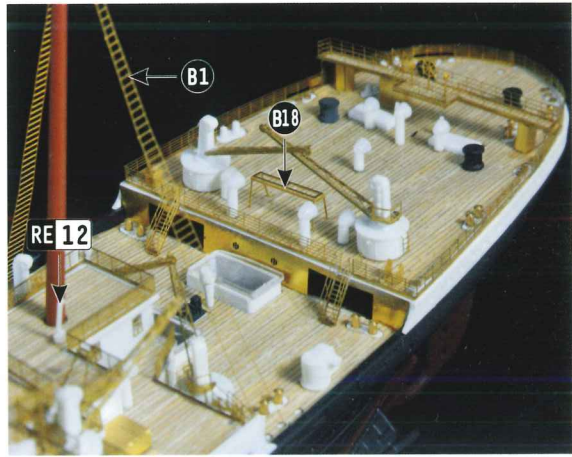
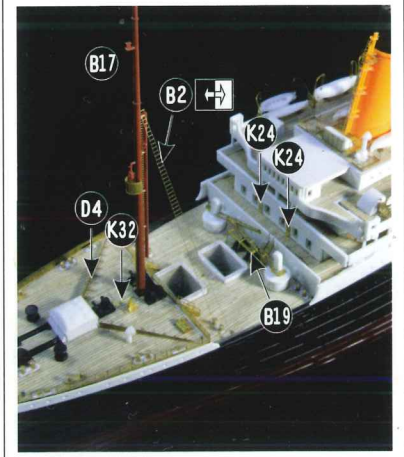
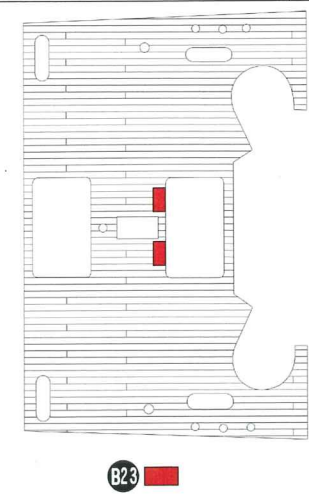
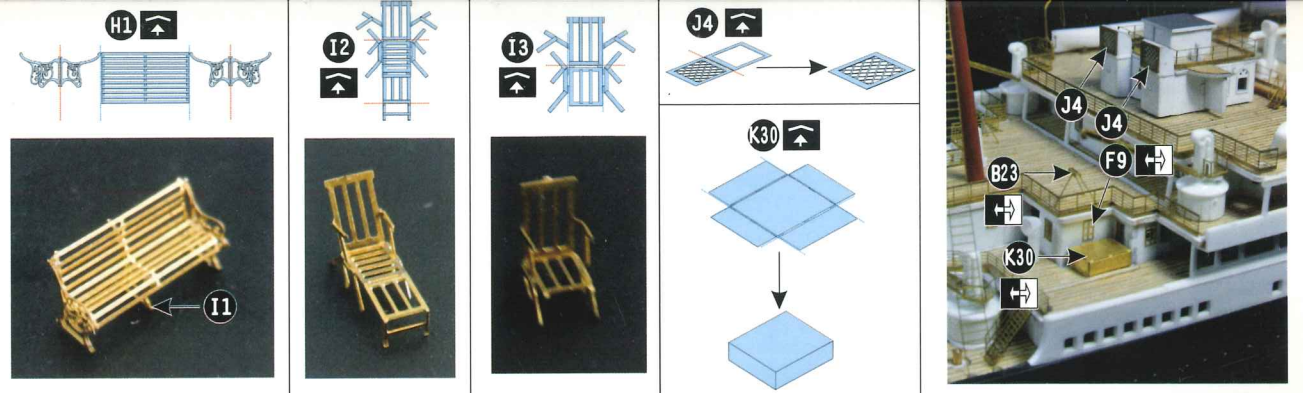
RE 10
RE 11

E39 E54

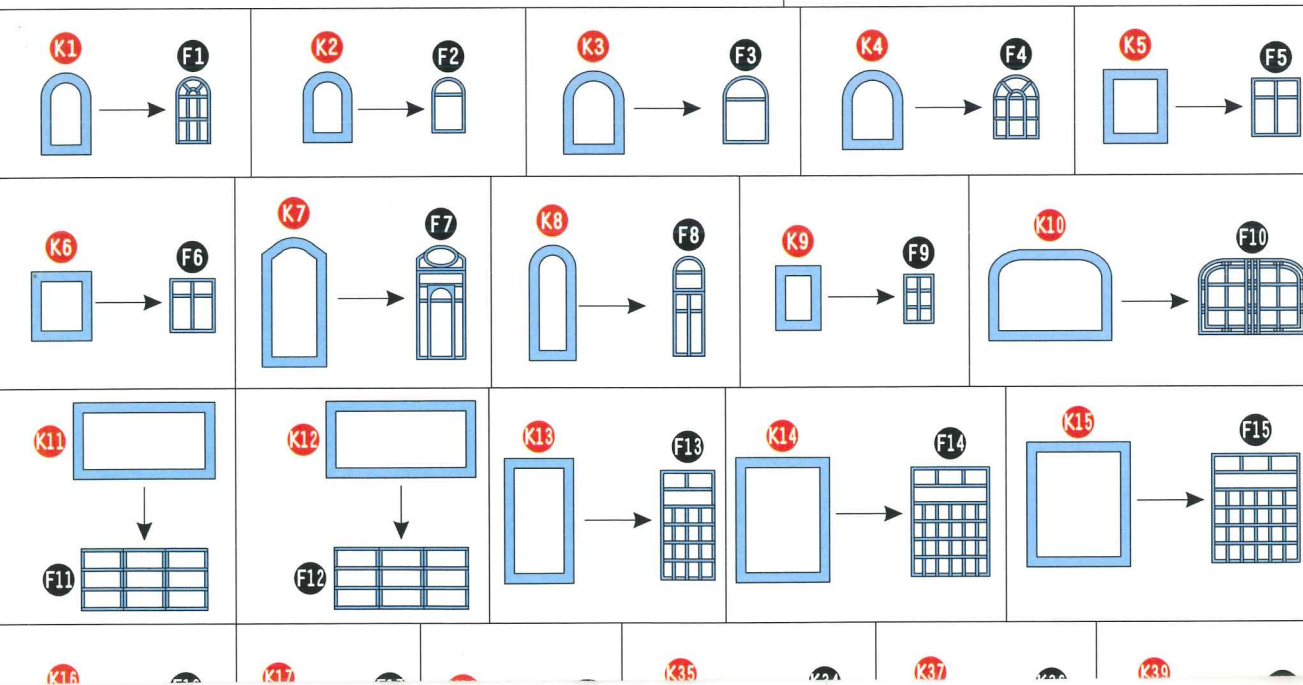


J3





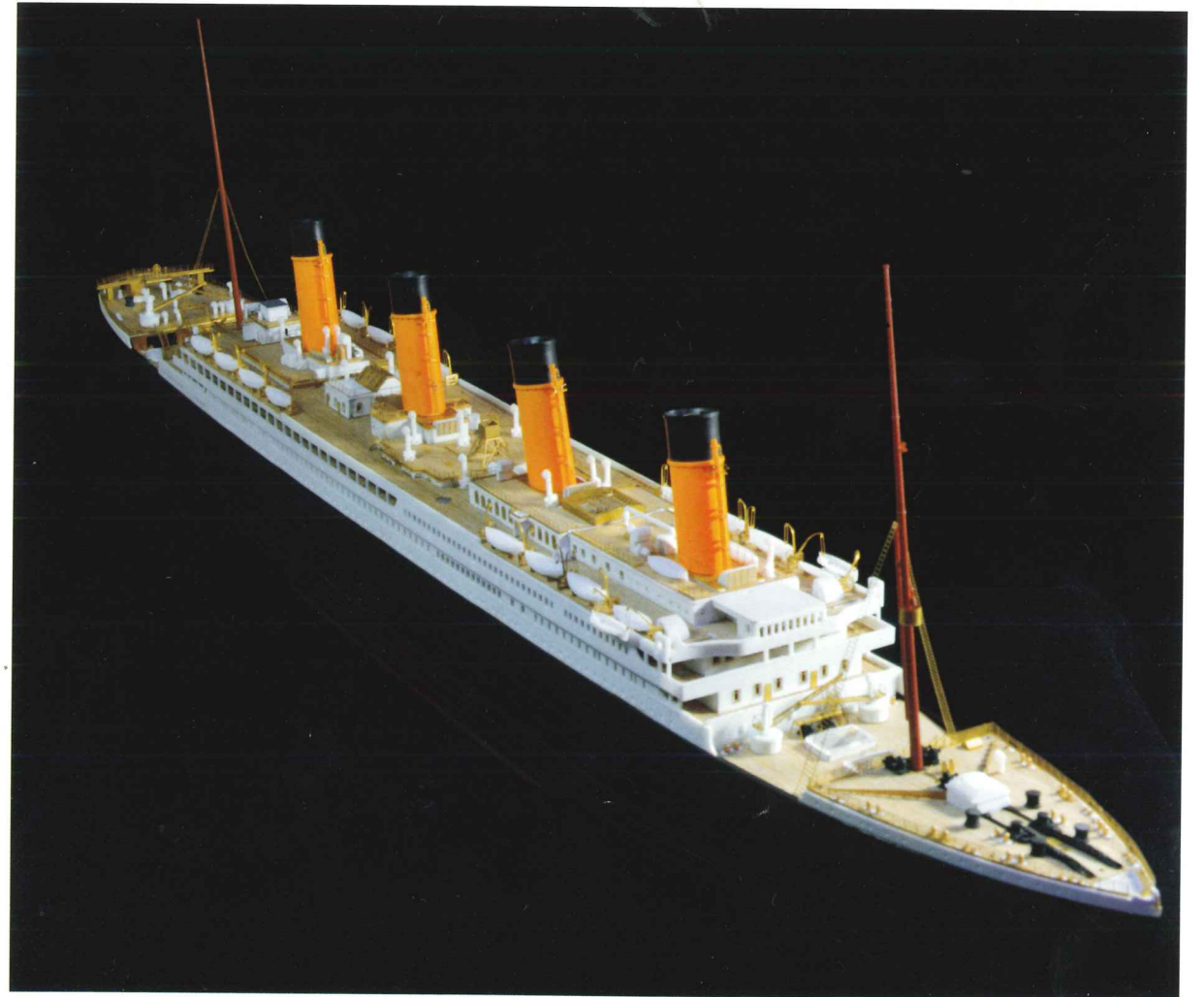
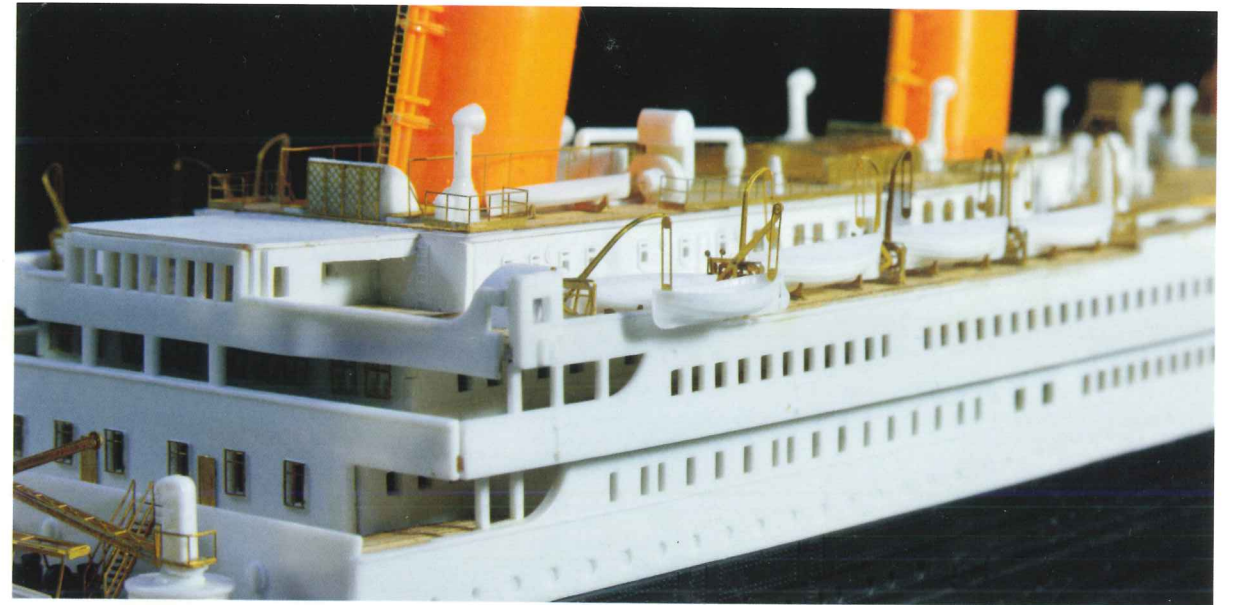
CAUTION 注意
 使用蝕刻片K22作為遮蓋模版在木甲板上噴漆，請不要粘貼K22。
 Please use K22 as painting mask, do not paste it on the wooden deck.

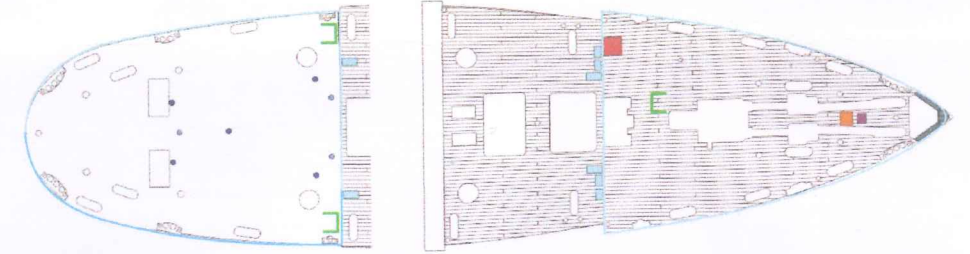
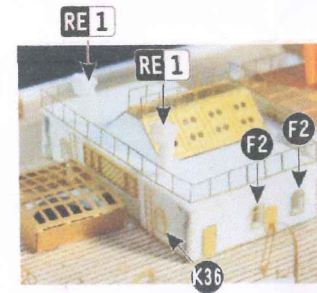
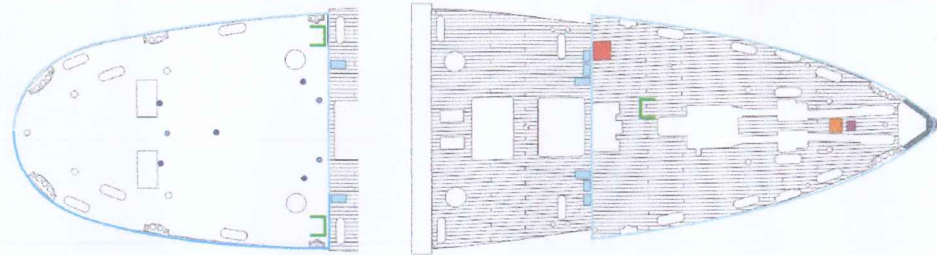
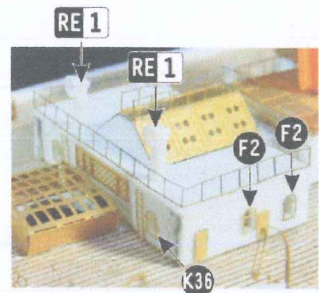
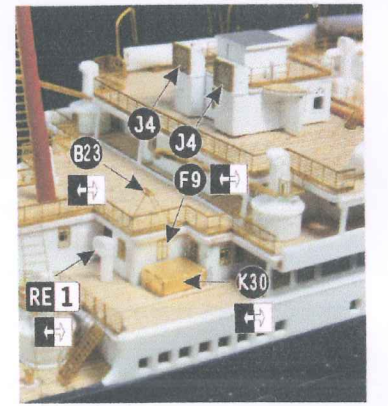
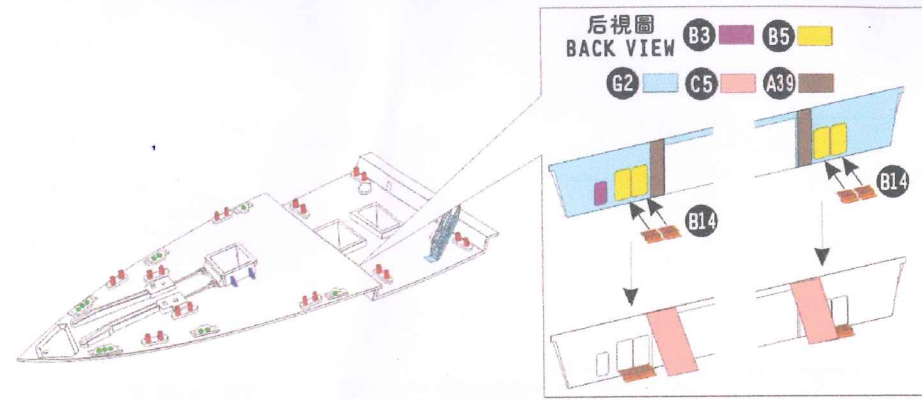
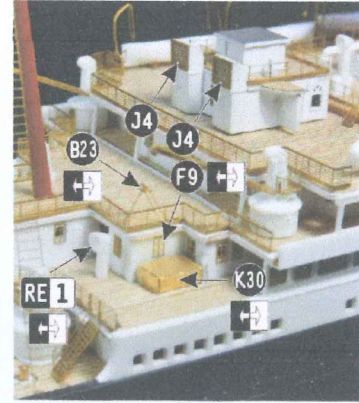
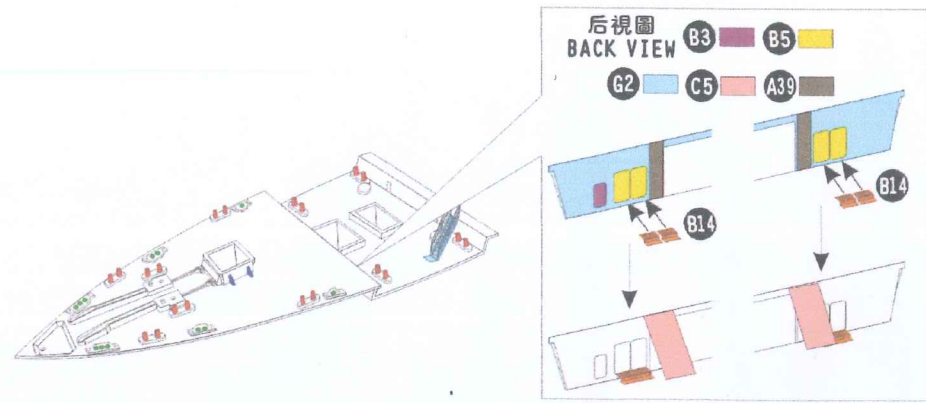




CAUTION 注意

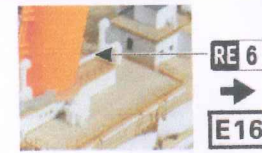
1. 以上所列出的蝕刻片零件紅色編號為黑色編號的輔助零件。
 2. 使用紅色編號零件輔助切除塑料件，請不要粘貼紅色編號零件。
1. All the red-marked PE parts above are black-marked ones' auxiliary parts.
2. Use red-marked parts to help cut off plastic parts, please do not paste the auxiliary parts.





CAUTION 注意

在安裝RE1和RE13時，請將出風口朝向艦尾。
When installing RE1 and RE13, Please put the air outlet toward stern.



CAUTION 注意

在安裝RE1和RE13時，請將出風口朝向艦尾。
When installing RE1 and RE13, Please put the air outlet toward stern.

we sincerely apologize for everything that makes you feel inconvenient
由于我们的疏忽给您带来不便深表歉意

we sincerely apologize for everything that makes you feel inconvenient
由于我们的疏忽给您带来不便深表歉意