



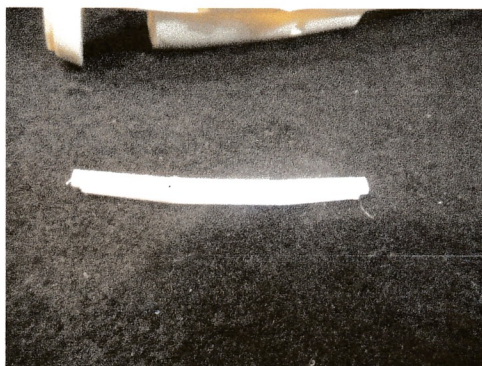
1/48 XP-72 conversion For Tamiya P-47 kits

Look this set over before you begin. Clean off any flash. Fill any air holes. There might be some.

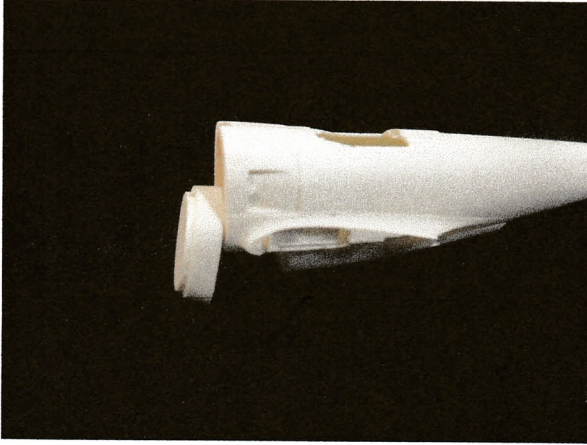
Read these instructions first. You may decide of a better way in which you wish to assemble it.

After cleaning up the fuselage, assemble the Tamiya cockpit. You will need to decide how best to install it. I began by first lining up the tail end of the fuselage and using thick superglue and a few spring clothespins, I glued it together. This allowed me to insert the cockpit into place by easing the forward fuselage apart just a little so it can be inserted. I marked where it should go and then installed a couple of square styrene supports on the inner fuselage walls.

Use the Tamiya supplied wing spars to make a new pair from scrap styrene. Use one of the wings to set the location and glue in place sparingly using some superglue.



Carefully sand the backing excess from the forward nose piece and glue into place on the assembled fuselage. I recommend thick Gorilla glue. The top of this piece has a notch in it.



Note the forward fuselage nose piece is not in place in this photo

Align the cowling extension and glue into place . Next add the cowling nose and forward intake on the belly below the cowling. Follow the Tamiya instructions for the wing and landing gear assembly.

1/48 Scale Republic XP-72 Ultrabolt

XP-72 Ultrabolt

Prototype No. 1 Serial Number 43-36598

Prototype No. 2 Serial Number 43-36599

Overall natural aluminum

Propeller black

No. 1 6" yellow tips

No. 2 chalked-on markings

Prop spinner red.

Anti-glare panel flat black

No. 1 forward of windscreen only

No. 2 full length of fuselage

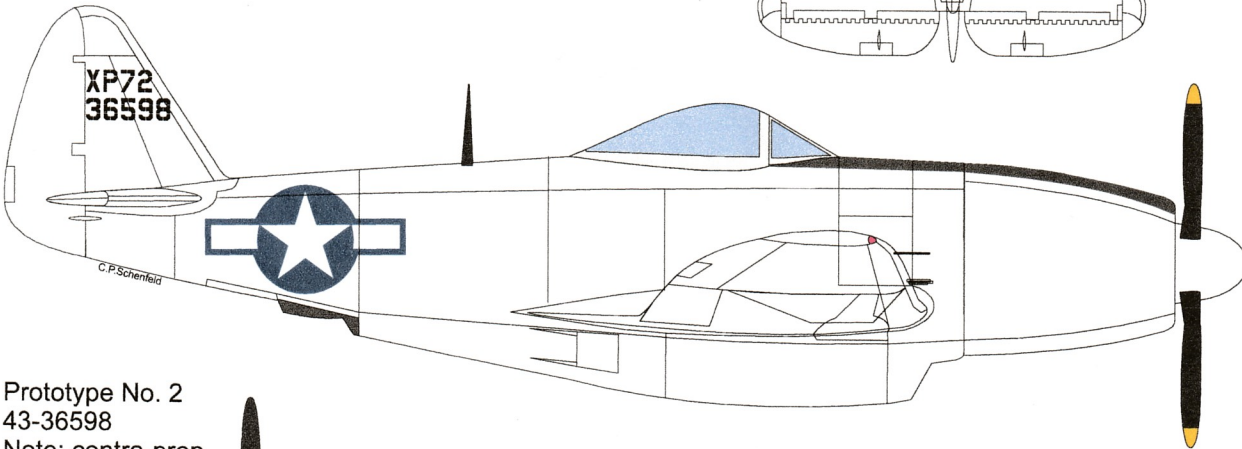
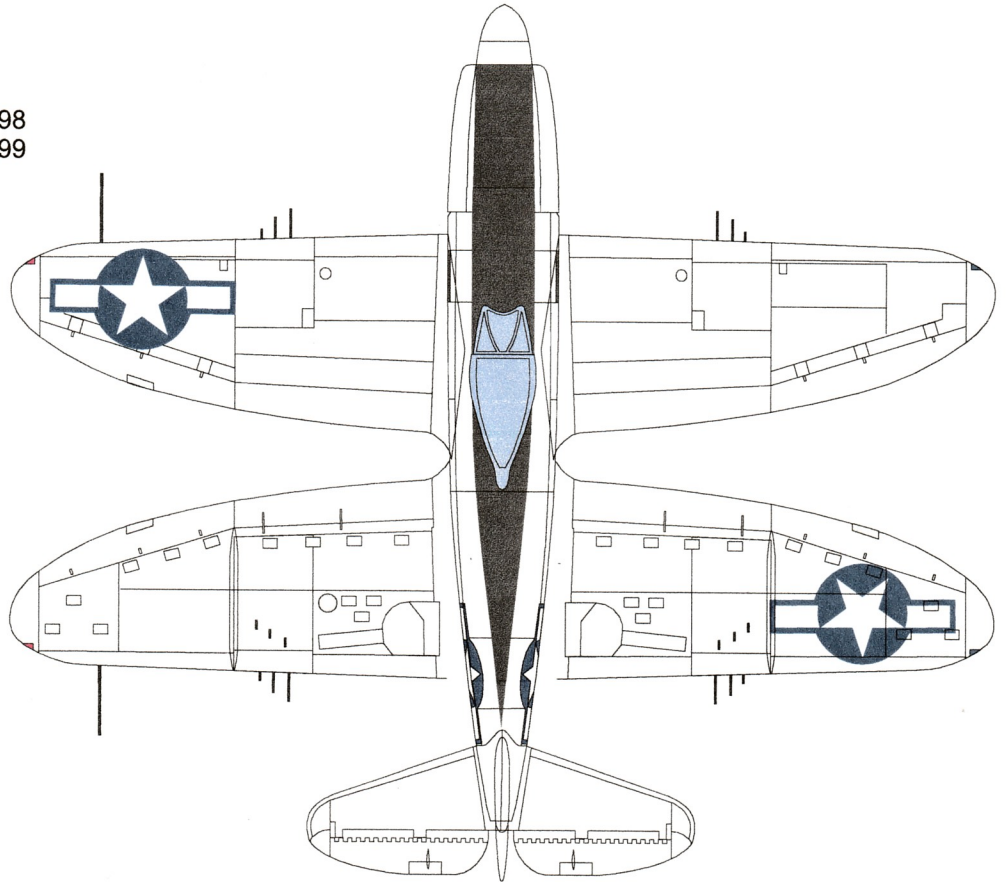
Star and bar national insignia

in four positions.

48" on wings

42" on fuselage

(Source from donor kit or
after market)



Prototype No. 1
43-36598
Note: single
4-blade
propeller

Prototype No. 2
43-36598
Note: contra-prop
with two 3-blade
propellers

