



Fw 190 A-3 To A-4 Conversion Kit

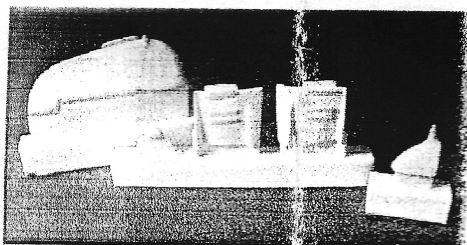
Included in this kit: 6 Ribbed Corrected rudder, converted fin tip, optional cooling louvers and optional armored head rest.

This set is designed to convert Tamiya's 1/48 Fw 190A-3 to a Fw 190A-4. Early Fw 190A-4s were distinguishable from the A-3 version only by the new fin tip modified to incorporate a post for the antenna wire. Later Fw 190A-4s were the first production versions to incorporate adjustable louvers in the engine air outlet panel that became a standard set-up for later variants, as well as enlarged head armor for the pilot. Parts are included to convert the Tamiya kit to either an early or late Fw 190A-4, as well as a replacement 6 rib rudder that improves upon the kit rudder. Some early Fws were retrofitted with the solid wheel installed on A-7 and later versions. Check references and if needed request EP#6-48, pair of wheels. Contact Eagle Editions for available decals on the Fw 190 A-4 aircraft.

CAUTION:

When working with resin products or modeling tools, ALWAYS wear safety glasses and appropriate respiratory protection.

Step 1 RESIN:



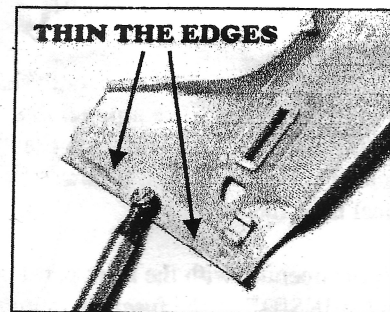
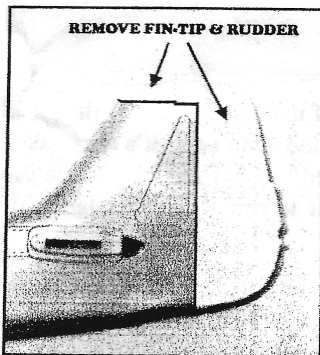
Remove the resin parts from the casting blocks. The exhaust panels and head armor can be removed easily by scribing along the base of the part and "snapping" the part free from the casting block. The rudder can be removed in a similar manner, or by sawing the block below the part and grinding, carving, or filing away until the part is free. Use a hobby saw to remove the fin-tip as close to the part as possible.

CAUTION: The antenna post is delicate! Remove any remnants of casting blocks before proceeding.

FOR EARLY FW 190A-4:

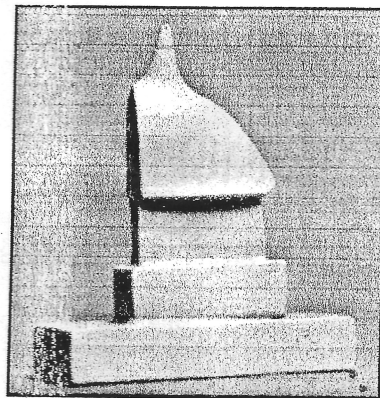
Step 2 MODIFY KIT PARTS:

Remove the fin-tip and rudder from both of the Tamiya kit fuselage halves along the panel lines indicated. Make sure that the edges are filed nice and straight, and right up to the panel lines. Thin the edges of the rudder opening to replicate the skin of the aircraft. A rotary motor tool is helpful with this chore.



Step3 FIN-TIP:

Assemble kit as per instructions, including the fuselage halves. Use CA adhesive to attach resin fin-tip to top of tail. We recommend using a slow-setting CA to achieve the desired position, then setting the part with a small amount of accelerator. Use sanding sticks to fair-in the resin and plastic parts. Re-scribe the panel lines if necessary. **CAUTION: The antenna post is delicate!**



©2003 Eagle Editions Ltd.

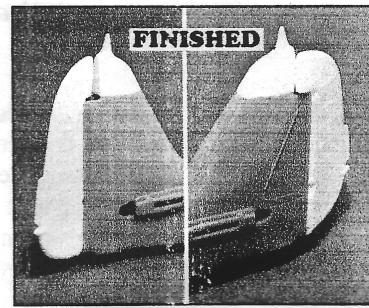
P.O. Box 580 * Hamilton MT 59840 USA

1-800-255-1830 orders (406) 375-9270 fax or (406) 363-5415 office

<http://www.eagle-editions.com>

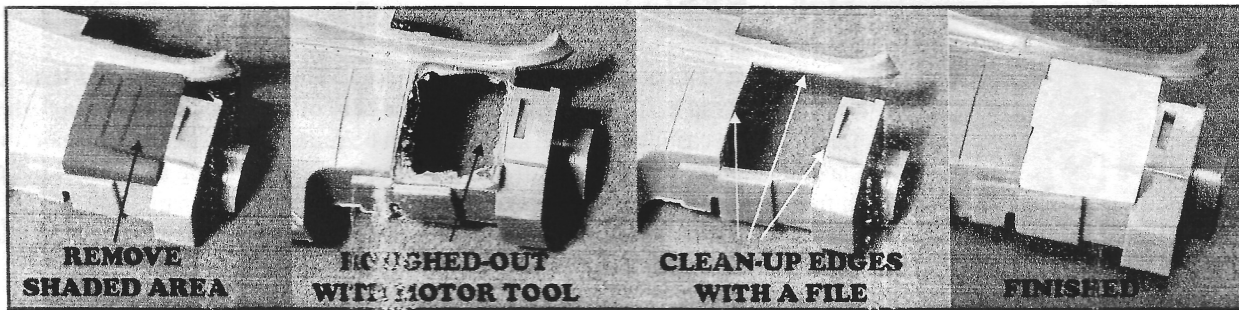
Step 4 RUDDER:

Use CA to attach rudder in the desired position. If you wish, rudder hinges can be made from sheet styrene and added inside the rudder opening in the appropriate places. Consult your references for details. The hinge points on the rudder may then be opened up to coincide with the new hinges.



FOR LATE Fw 190A-4:

Remove the fin-tip and rudder as per Step 2.



Step 5 AIR OULET PANEL:

Remove the air outlet panel from both sides of the fuselage along the panel lines indicated. **NOTE: The forward portion of the outlet panel does not have a panel line molded onto the kit's surface. The correct portion to remove is a STRAIGHT LINE from the front of the hinges up to the "flared" top of the panel.** See illustration. We recommend using a rotary motor tool to initially clean out the openings, followed by a file to straighten the edges. Take care not to remove too much plastic. Work only out to the panel lines indicated.

Test fit the opening with the resin part to ensure a perfect fit. Use CA to attach the new panel. We recommend using a slow-setting CA on the **INSIDE** of the fuselage followed by a small amount of accelerator when satisfied with the fit.

Assemble the rest of the kit as per the instructions.

Assemble the fin-tip and rudder as per Steps 3 & 4.

Step 6 HEAD ARMOR:

Remove the forward portion of Tamiya kit part B4 using illustration as a guide.

Attach the armor in the same fashion as the kit part using CA adhesive.

