

**TESTORS**

BACKGROUND

"Rod Magician" Boyd Coddington has done it again with the retro-contemporary *CheZoom!* A study in what a 1967 Chevrolet Bel Air would look like if it were designed by today's engineers. It began as a sketch by freelance automotive stylist Thom "Frankenstude" Taylor, eventually finding its way into the hands of Boyd. It would still be on Boyd's wall if it were not for Joe "Mr Gasket" Hudka. Boyd had remembered how Joe loves '57 Chevys (he owns around 20), so during a visit to Boyd's shop one day, Joe was shown Taylor's drawing. Immediately hooked, "I'll take one", was Joe's response.

Boyd began by locating and completely stripping a '57 Bel Air. Boyd decided not to use the original Chevy frame since new seats had to be lowered to clear the lower profile roof line. Obviously this meant fabricating a custom tubular chassis and grafting onto it both front and rear, suspension systems taken from a donor '85 Corvette and engineered to OEM specs so it could be serviced at any local Chevrolet Dealership.

Boyd also selected a stock LT1 crate motor, and mated this to a Chevy 700-R4 tranny. In all, only a guesstimated 10 percent of the original body skin survived this radical metamorphosis. And of course it would not be a "Boyd Rod" if it didn't have Boyd's 17" inch billet Aluminum wheels on all fours...*CheZoom!*

SPECIFICATIONS

Engine	'92 Corvette LT1 90-degree V-8 16-valve 350 cubic inches
Max. Power	300 hp @ 5,000 rpm
Wheelbase	115 in.
Length	201 in.
Width	73 in.
Height	48 in.

PREPARATION OF PARTS

1. Never tear parts off of the parts tree. Use a **Testor Hobby Knife**, or **Model Master Micro Shear Sprue Cutter #50628C**, or small wire cutters to remove the parts from the tree.
2. It is possible some parts may require a little attention with a file or sandpaper to ensure a proper fit and neat appearance. Hobby files, or **Model Master Sanding Films #8812** appropriate for model building are available in most good hobby shops.
3. If you desire, you may fill any seams (where parts fit together) or imperfections with **Testor Contour Putty #3511** for plastic models, available at most good hobby shops.

PREPARATION OF PARTS

1. Never tear parts off of the parts tree. Use a **Testor Hobby Knife**, or a **Model Master Micro Shear Sprue Cutter #50628C**, or a small wire cutters to remove the parts from the tree.
2. It is possible some parts may require a little attention with a file or sandpaper to ensure a proper fit and neat appearance. Hobby files, or **Model Master Sanding Films #8812** appropriate for model building are available in most good hobby shops.
3. If you desire, you may fill any seams (where parts fit together) or imperfections with **Testor Contour Putty #3511** for plastic models, available at most good hobby shops.

PAINTING

You can obtain an excellent finish on your model using **Testor** finish preparation products and paints. Detailed descriptions of paint types and colors are included throughout the pages that follow. Good brushes are essential for proper detailing.

Testor Model Master brushes are recommended and available at good hobby stores. Be sure you have the entire selection for all your modeling needs. To clean them, wash in soap and water, and store with bristles upward when not in use. Wash plastic parts before detaching them from the parts tree. Warm water and liquid dishwashing detergent will remove the oils left from the manufacturing process. Let the parts dry and avoid excessive handling.

Immediately before painting, wipe the parts with a "tac rag" (available at automotive parts stores) to remove dust and lint. Most small parts are best painted while still attached to the parts tree. You can also detach them and hold with tweezers or "magic" tape while painting. Paint in one direction only. If your paint is the correct thickness, brush strokes will disappear as the color dries. If the paint seems too thick, thin with water or rubbing alcohol. Wheels may be detached from the parts tree and fit onto toothpicks for painting. Just hold the paintbrush against the edge of the wheel and rotate the stick and wheel to obtain a neat finish. Let the paint dry completely before handling.

When the parts are dry, assemble the model following the directions closely. Remember! cement will not hold strongly to painted surfaces. Use your **Testor Hobby Knife** to carefully remove paint from all surfaces to be cemented. After you have assembled the model you can touchup areas where cement may have marred the finish.

PATIENCE is key to obtaining neat and professional results. If you have problems at any stage of assembly, give it a break, and resume the assembly at a later time.

REMEMBER: It is only plastic! Modeling is meant to be a pleasurable and relaxing experience, not a negative one. You also have to look at mistakes not as failures, but rather as learning experiences.

ASSEMBLY TIPS

Tweezers will be useful in assembling the many small parts in this kit. The type used by postage stamp collectors is recommended. Liquid cement, **Testor #3502** is recommended for construction since it can produce the neatest, quickest, and strongest glue joints. Apply small amounts of cement, using the tip of a **Model Master #2** brush, to the surfaces to be joined while holding the parts in place. **DO NOT** use large amounts of cement, it may run and ruin detail on parts.

INTRODUCTION

Your detailed 1/24 scale **CheZoom**, fashioned after Boyd Coddington's full-size creation, may be constructed one of two ways. With front hood either open or closed. Whichever way you choose, your **CheZoom** makes a fine display.

1 ENGINE

Preliminary Painting

Paint parts as indicated by **Bold Italic** letter callouts using the **COLOR KEY** above.

Assembly

1. Cement **Engine Halves 41 (Left) & 42 (Right)** together as shown.
2. Carefully cement **Cylinder Heads 47 (Left) & 48 (Right)** onto engine block as shown.
3. Cement **Air Intake Manifold 49** onto top of engine as shown.
4. Carefully cement **Alternator 43 & Belt/Pulley Set 44** onto front of engine as shown.
5. Apply decals to top of Intake Manifold as indicated by numbers as shown (inset). See **Applying Decals** above.

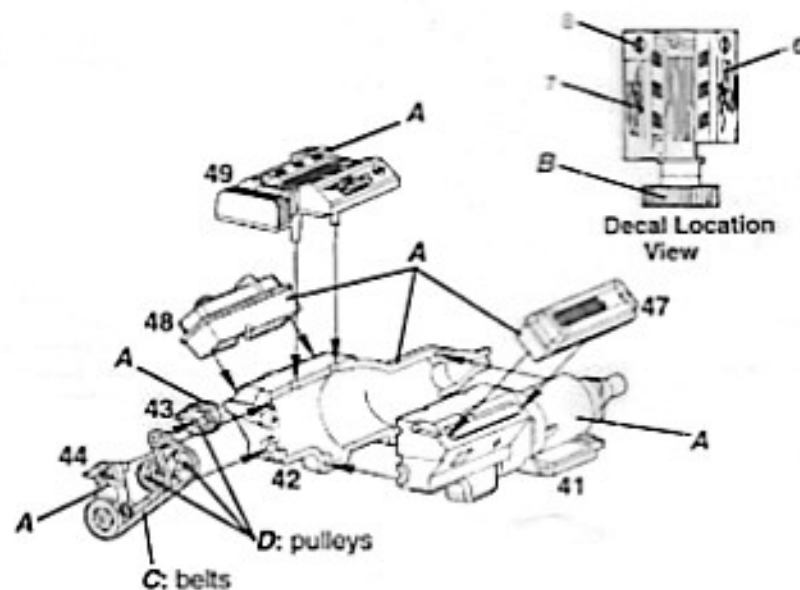
APPLYING DECALS

1. Select the decals you plan to use and cut them from the decal sheet with scissors or a **Testor Hobby Knife**.
2. Working with only one decal at a time, dip the decal in clear water for no more than five seconds. Remove it from the water and place on a dry paper towel for about one minute.
3. When the decal slides easily on the backing paper, slide it to the edge of, and on to, the surface of the model with a paint brush or tweezers. **REMEMBER** the decals are very thin and can be easily ripped. Work slowly and carefully.
4. Once the decal is in the desired position apply a small amount of **Testor Decal Set #0004**. This will help the decal conform to any irregularities in the surface of the model. Allow the decal to dry undisturbed. Should you desire to move decal before it has dried, apply a little Decal Set to soft brush and push the decal into desired position.
5. When the decals are completely dry (usually overnight), if you wish you may apply a coat of **Testor Model Master Glosscote #2735**. If you decide to do this, you must mask off the windows with clear tape first. Then apply Glosscote to the entire model. Let dry before removing tape. This will give the model an authentic gloss finish and will protect the surface of the model.

COLOR KEY

- A** CheZoom Teal Pearl #52603
B Gloss Gull Gray #1729
 (FS 16440)
C Flat Black #1149
D Classic Black #2721
E Silver #1146 or Chrome #1290
F Red #1103
G Gray #1138
H European Dark Green #1764
 (FS34092)
J Aluminum #1181
K Flat White #1168

Note: This model contains chrome plated parts. The plating must be scraped away from surfaces to be joined with model cement. A good cement joint cannot be obtained on plated or painted surfaces. Plastic to plastic bonds are the strongest of all.



2 CHASSIS 1

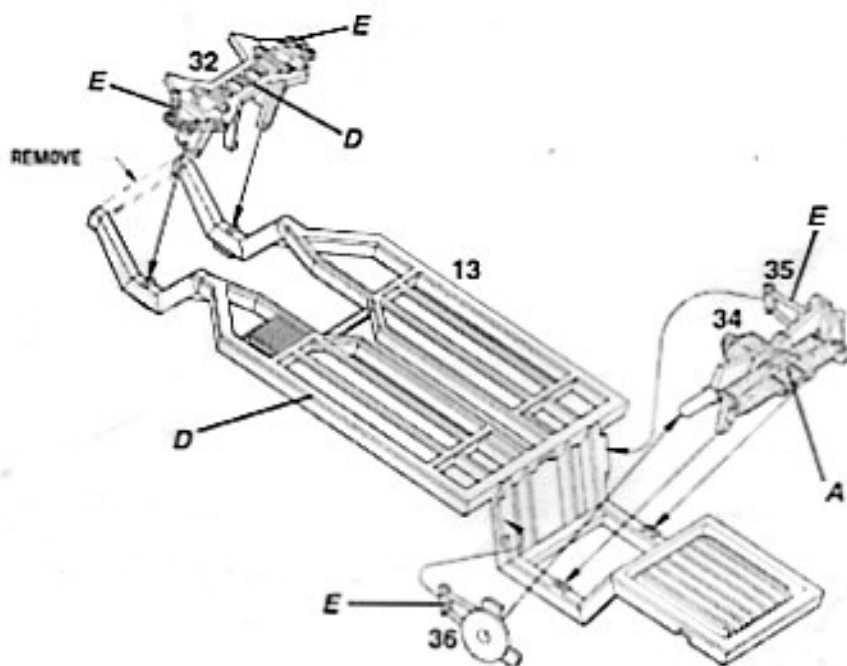
Preliminary Painting

Paint parts as indicated by *Bold Italic* letter callouts using the **COLOR KEY** below.

Note: Remove support crossmember with hobby knife where shown.

Assembly

1. Cement Front Suspension 32 onto Chassis 13 as shown.
2. Carefully cement Rear Spindle Links 35 (Left) & 36 (Right) onto Rear Suspension 34.
3. Glue this assembly onto chassis as shown.



COLOR KEY

- A CheZoom Teal Pearl #52603
- B Gloss Gull Gray #1729 (FS 16440)
- C Flat Black #1149
- D Classic Black #2721
- E Silver #1145 or Chrome #1290
- F Red #1103
- G Gray #1138
- H European Dark Green #1764 (FS34092)
- J Aluminum #1181
- K Flat White #1158

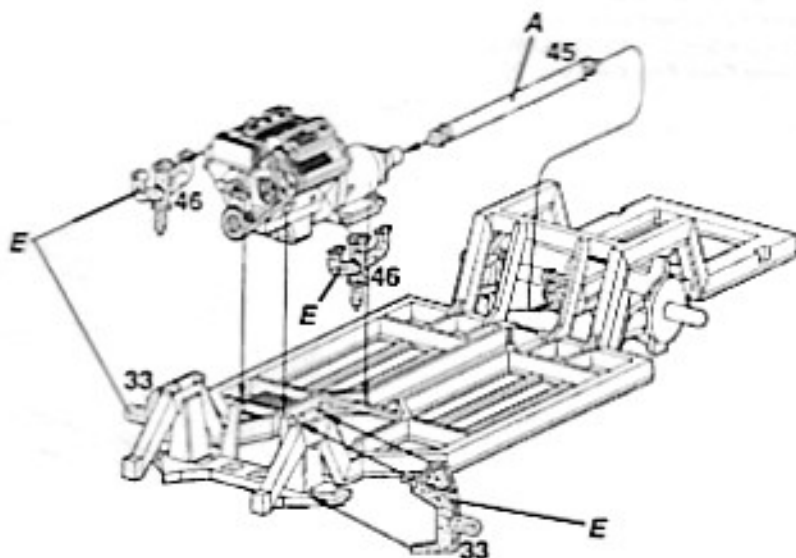
3 CHASSIS 2

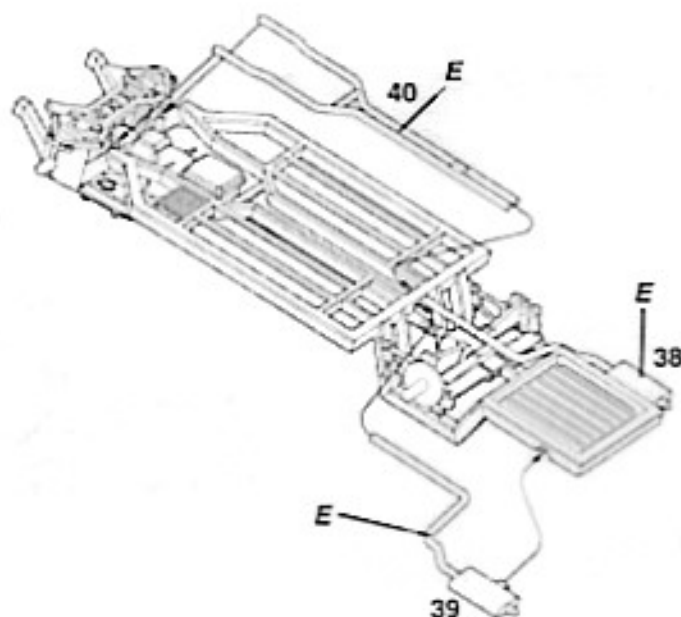
Preliminary Painting

Paint parts as indicated by *Bold Italic* letter callouts using the **COLOR KEY** above.

Assembly

1. Cement Front Axle Spindles 33 (2), onto chassis as shown.
2. Carefully cement Exhaust Manifolds 46 (2), onto cylinder heads as shown.
3. Cement Driveshaft 45 into rear axle and transmission while gluing engine assembly onto support posts as shown.





4 MUFFLERS

Preliminary Painting

Paint parts as indicated by ***Bold Italic*** letter callouts using the **COLOR KEY** on page 5.

Assembly

1. Cement **Exhaust Pipes 40** onto chassis as shown.
2. Carefully cement both **Tailpipe/Mufflers 38 (Left) & 39 (Right)** onto chassis as shown.

5 INTERIOR

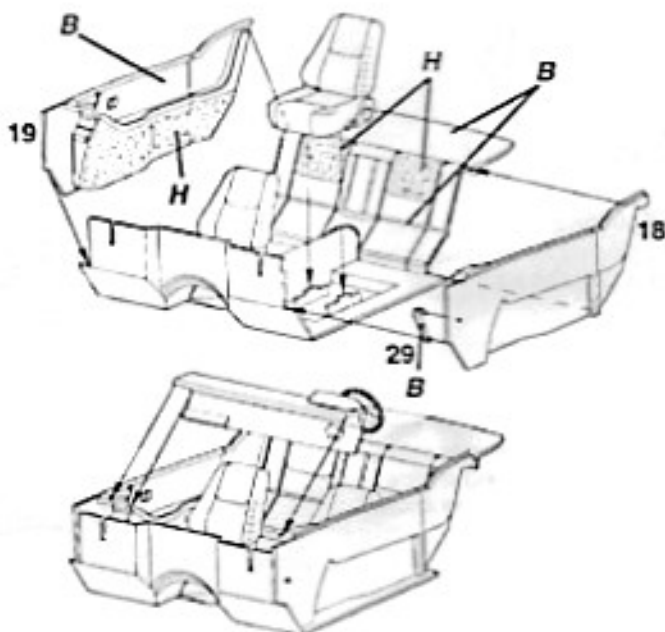
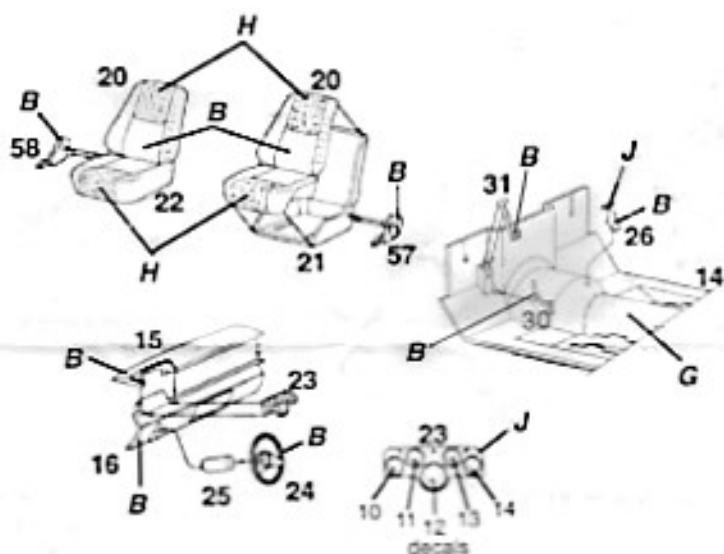
Preliminary Painting

Paint parts as indicated by ***Bold Italic*** letter callouts using the **COLOR KEY** on page 5.

Note: Apply **Instrument Panel** decals indicated by numbers before assembly. See **Applying Decals** on page 2.

Assembly 1

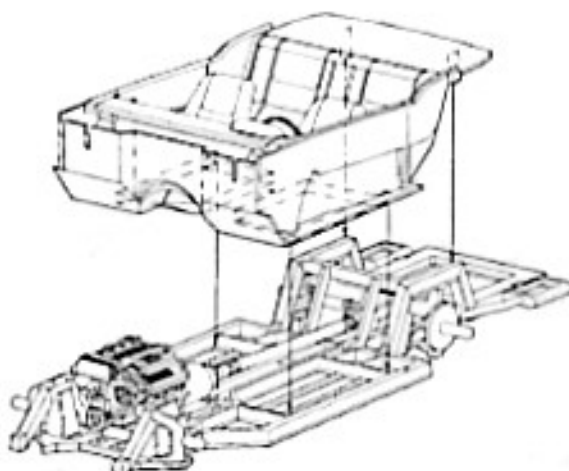
1. Cement **Dashboard Upper 15** to **Dashboard Lower 16** as shown.
2. Carefully cement **Instrument Panel 23** onto dashboard assembly as shown.
3. Cement **Steering Wheel 24** onto **Steering Column 25**. Glue this assembly into dashboard as shown.
4. Carefully cement **Seatbacks (21 Left & 22 Right)**, onto **Seat Front Halves 20** as shown.
5. Cement **Seat Side Plate (57 Left & 58 Right)** onto appropriate seat as shown.
6. Carefully cement **Shifter Handle 26**, **Accelerator 30** & **Brake Pedal 31**, onto **Interior Pan 14** as shown. *Let these assemblies dry before proceeding to the next step!*
7. Cement **Seat assemblies** onto appropriate locating bars on interior pan as shown.
8. Carefully cement **Parking Brake 29** onto **Inner Left Door Panel 18**, and glue this assembly onto chassis as shown. Glue **Inner Right Door Panel 19** onto chassis as shown.
9. Cement **Dashboard assembly** onto front of **Interior assembly** as shown.



6 INTERIOR / CHASSIS

Assembly

1. Carefully cement Interior assembly onto chassis as shown in illustration.



COLOR KEY

- A CheZoom Teal Pearl #52603
- B Gloss Gull Gray #1729 (FS 16440)
- C Flat Black #1149
- D Classic Black #2721
- E Silver #1146 or Chrome #1290
- F Red #1103
- G Gray #1138
- H European Dark Green #1764 (FS34092)
- J Aluminum #1181
- K Flat White #1168

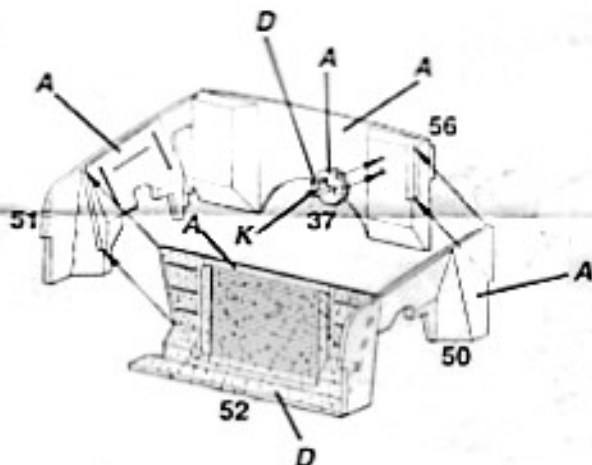
7 ENGINE HOUSING

Preliminary Painting

Paint parts as indicated by *Bold Italic* letter callouts using the **COLOR KEY** above.

Assembly

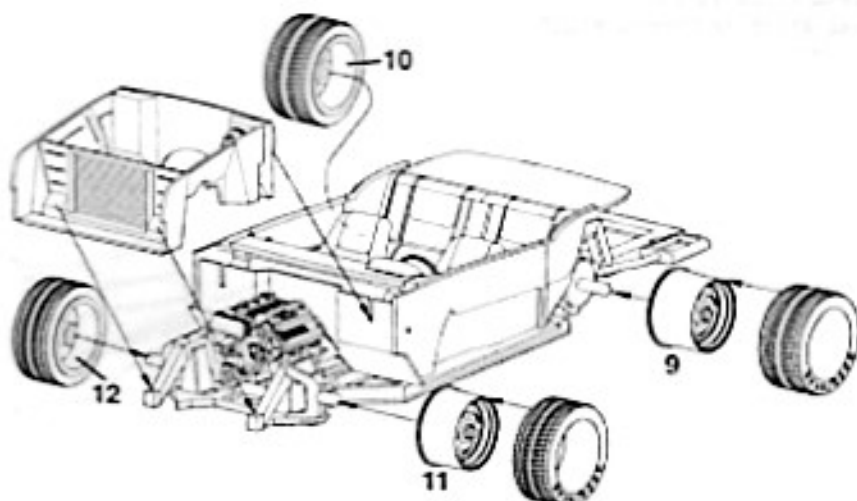
1. Cement Brake Master Cylinder **37** onto Firewall **56** as shown.
2. Carefully cement Inner Fenders **50** (Left) & **51** (Right) onto firewall as shown.
3. Cement Radiator Core **52** onto inner fenders as shown.



8 WHEELS

Assembly

1. Carefully cement engine housing onto chassis as shown.
2. Press rear tires onto Rear Wheels **9** (Left) & **10** (Right) as shown. Do the same with Front Wheels **11** (Left) & **12** (Right). **NOTE:** rear tires are wider.
3. Carefully cement wheels onto appropriate axles, to ensure proper wheel direction.



Note: Check direction of tire tread for proper rotation before pressing onto wheel.

9 BODY

Preliminary Painting

Paint parts as indicated by ***Bold Italic*** letter callouts using the **COLOR KEY** below.

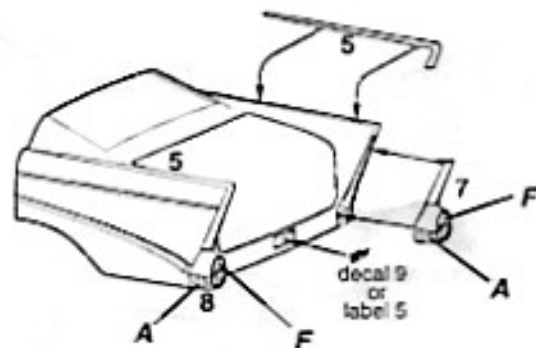
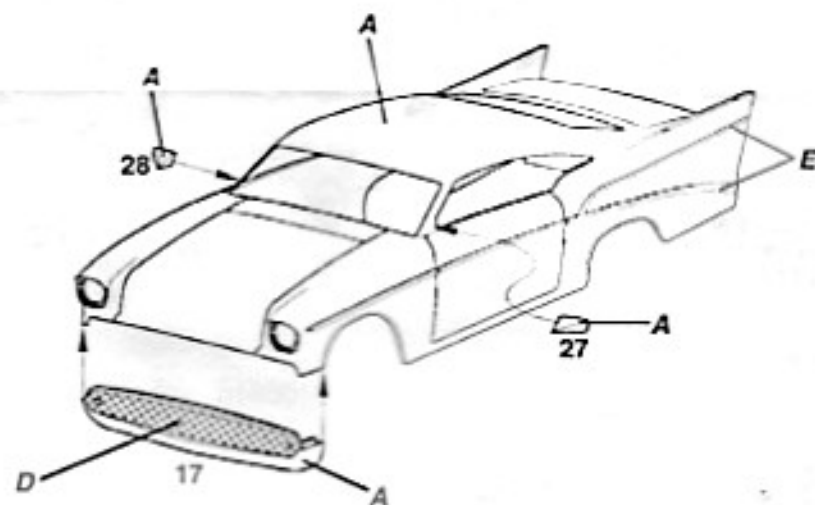
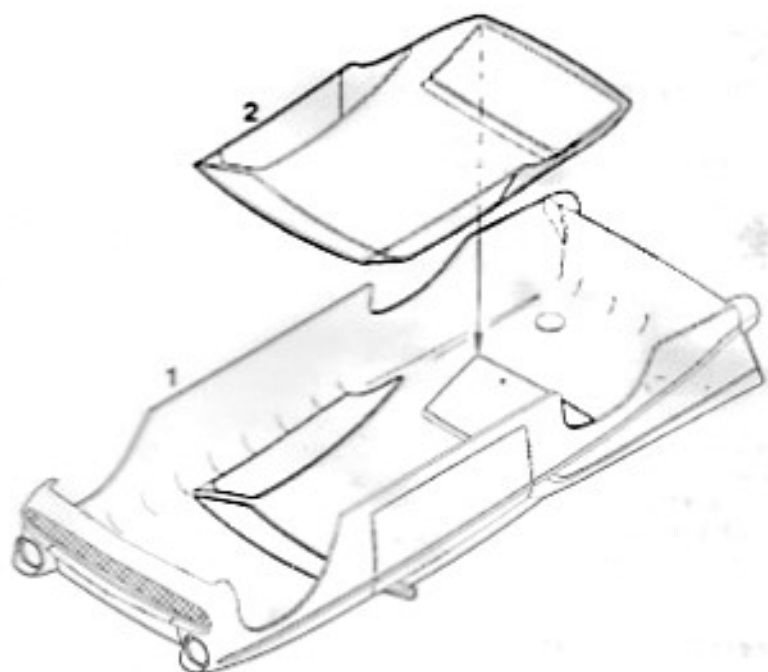
NOTE: Clear parts are best glued in place, with white glue. White glue will not mar the plastic and thus results in a better appearance than conventional model cement. If using plastic cement be careful not to fog glass where visible.

Assembly

1. Carefully glue **Window Glass 2** onto **Body 1** as shown. See **Note!**
2. Cement **Left Rear View Mirror 27** & **Right Rear View Mirror 28** onto the appropriate side of body as shown.
3. Carefully cement **Front Grille 17** onto front of body as shown.
4. Cement **Rear Fender Trim Tops 5** onto tops of fenders as shown.
5. Carefully cement **Rear Fender End Trim 7 (Right) & 8 (Left)** onto appropriate fender as shown.
6. Apply license plate decal as shown. See **Applying Decals** on page 2

COLOR KEY

- A** CheZoom Teal Pearl #52603
- B** Gloss Gull Gray #1729 (FS 16440)
- C** Flat Black #1149
- D** Classic Black #2721
- E** Silver #1146 or Chrome #1290
- F** Red #11C
- G** Gray #11:
- H** European Dark Green #1764 (FS34092)
- J** Aluminum #1181
- K** Flat White #1168



10

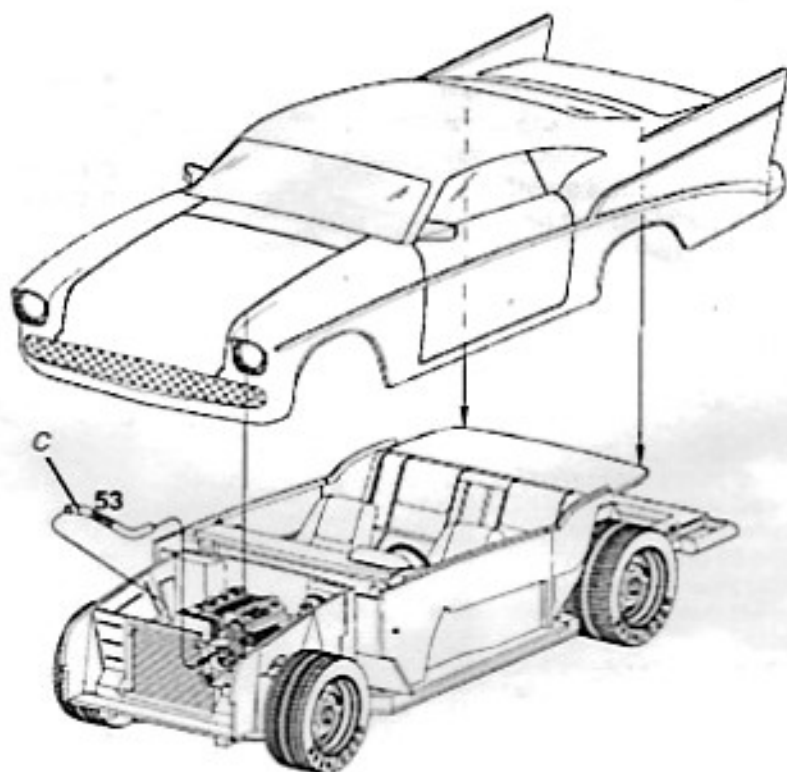
BODY / CHASSIS

Preliminary Painting

Paint parts as indicated by **Bold Italic** letter callouts using the **COLOR KEY** below.

Assembly

1. Cement Radiator Hose **53** into place as shown.
2. Carefully guide **body** down over the top of the chassis assembly, making sure everything aligns properly. Carefully cement body to chassis as shown.



11

Grille / Headlights

Assembly

1. Cement Front Grille Bar **6** into place as shown.

Note: one locating pin is a larger diameter than the other, make sure part is correctly placed.

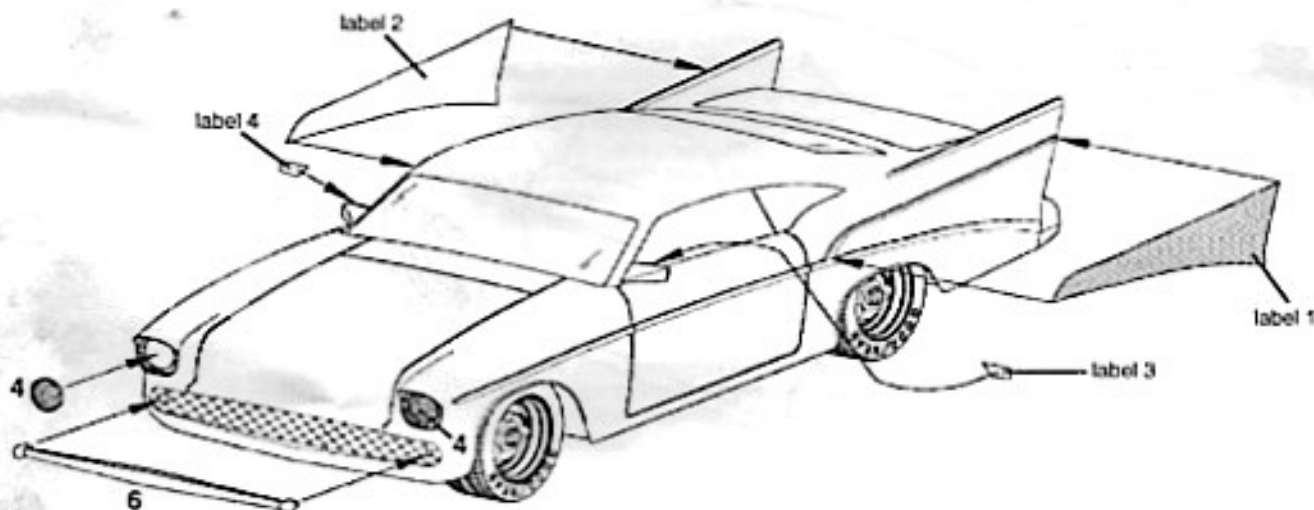
2. Carefully cement Headlamps **4** (2) into front of fenders as shown.

Note: painting the back of headlights silver or chrome will enhance their realistic appearance.

3. Apply pressure sensitive labels where shown in illustration.

COLOR KEY

- A CheZoom Teal Pearl #52603
- B Gloss Gull Gray #1729 (FS 16440)
- C Flat Black #1149
- D Classic Black #2721
- E Silver #1146 or Chrome #1290
- F Red #1103
- G Gray #1138
- H European Dark Green #1764 (FS34092)
- J Aluminum #1181
- K Flat White #1168



12 OPEN HOOD (OPTIONAL)

You may omit this step if you do not feel comfortable with the procedure. Your CheZoom makes a fine display with or without the hood open! This procedure should not be attempted by inexperienced modelers.

Preliminary Painting

Paint parts as indicated by ***Bold Italic*** letter callouts using the **COLOR KEY** below.

Assembly

1. With a sharp hobby knife, ***Carefully!*** cut out hood along panel lines as shown.
2. Carefully cement **Hood Hinges 54 (Left) & 55 (Right)** onto the appropriate inner fender. See inset for location. Let these dry thoroughly before proceeding.
3. Cement hood onto hinges as shown in the inset, making sure it is aligned properly.

COLOR KEY

- A CheZoom Teal Pearl #52603
- B Gloss Gull Gray #1729 (FS 16440)
- C Flat Black #1149
- D Classic Black #2721
- E Silver #1146 or Chrome #1290
- F Red #1103
- G Gray #1138
- H European Dark Green #1764 (FS34092)
- J Aluminum #1181
- K Flat White #1158

