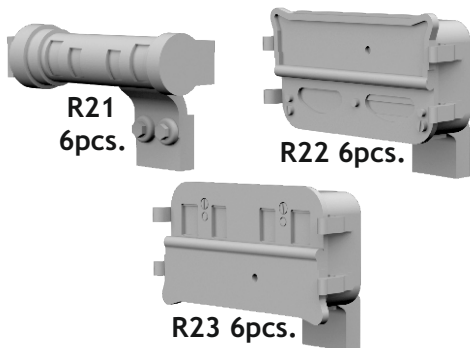


**635 022 WWII German NOTEK rear lights**

**eduard**  
**BRASSIN**  
*Print*

**1/35 scale**



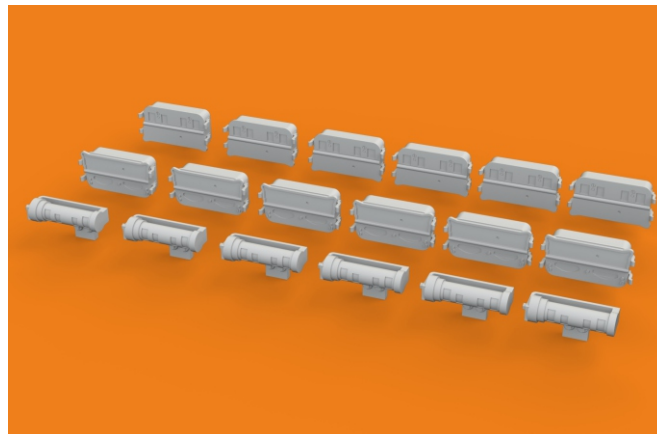
**R21**  
**6pcs.**

**R22 6pcs.**

**R23 6pcs.**

**635 022 WWII German NOTEK rear lights**

**1/35**



**eduard**

**COLOURS**

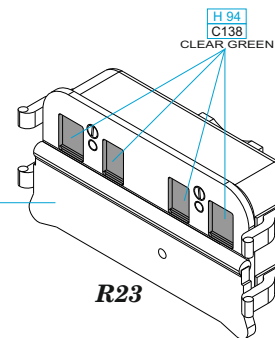
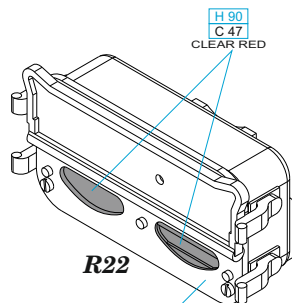
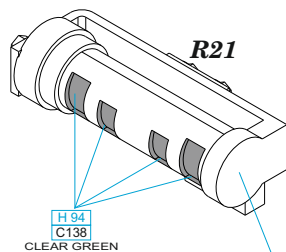
GSI Creos (GUNZE)			Mr.METAL COLOR	
AQUEOUS	Mr.COLOR			
[H 90]	[C 47]	CLEAR RED		
[H 94]	[C 138]	CLEAR GREEN		

**eduard**

**435 21 Obrnice 170**  
**Czech Republic**

[www.eduard.com](http://www.eduard.com)  
**7,95**





**CAMOUFLAGE  
COLOR**

- |  |   |  |                     |
|--|---|--|---------------------|
|  | REMOVE<br>ODSTRANIT                       |  | BEND<br>OHNOUT      |
|  | GRIND<br>OBROUSIT                         |  | OPTION<br>VOLBA     |
|  | DRILL HOLE<br>VRTAT OTVOR                 |  | REPLACE<br>NAHRADIT |
|  | SYMMETRICAL ASSEMBLY<br>SYMETRICKÁ MONTÁŽ |  |                     |
|  | SCRIBE THE PANEL AND HOLES<br>RYTI        |  |                     |
|  | REVERSE SIDE<br>OTOČIT                    |  |                     |