

美國海狼級動力潛艇

SEAWOLF-CLASS ATTACK SUBMARINE

NB-5001 1/350 USS SSN-21/22

USS Seawolf-class submarines project began in the mid-1980s were designed to destroy Soviet ballistic missile submarines before they could attack American targets. The Seawolf has the highest tactical speed of any US submarine, was conceived as a faster, better-armed eventual replacement for the Los Angeles class (SSN 688) nuclear-powered attack submarine and Seawolf is the first American attack submarine to use a hull made entirely of high-pressure HY-100 steel. The HY-100 steel was designed to achieve an operational diving depth of 300 meters or more. The first Seawolf (SSN 21) was commissioned on 19 July 1997 at Electric Boat Shipyard. The second submarine of Seawolf class were the Connecticut (SSN-22) was commissioned in December 1998.

美國海狼級攻擊潛艇計劃始於上世紀八十年代，主要設計專門用來對付前蘇聯洲際彈道導彈潛艇。海狼級潛艇比較其他美國潛艇更快更靜，功能更多，準備用來替換‘洛杉磯’級潛艇。至今為止共有三艘海狼級潛艇投入服務，依次序為‘海狼’，‘康納狄格’及‘占美·卡達’，最新之‘占美·卡達’號比早前兩艘更長，功能更多。

Read Before Assembly

- Study and understand these instructions thoroughly before beginning assembly. Make sure all parts are included by compared them to those shown on page 1 of this instruction leaflet.
- Remove parts from sprues as needed, and trim excess with a hobby knife. Be careful not to lose any small parts.
- Additional tools recommended (not included), such as: sprue cutter, long nose pliers, hobby knife, file, tweezers, pin vise, scissors, cement, sandpaper, soft cloth, glue and paint.
- Keep all parts out of reach of children, as they pose a choking hazard. Discard all unnecessary bags and sprues when model is completed to avoid accidental injury.

裝配之前請仔細閱讀

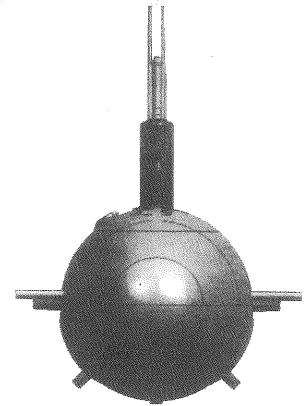
- 小心用模型銼刀銼平所有零件表面的注射口。
- 小心用刀切下零件時，不要遺失小零件。
- 某些零件表面需貼上水貼紙，請選擇在裝配的同時進行。
- 推薦的模型工具（自備），包括：膠水，水口剪刀，長咀鉗，刀片，銼刀，鑷子鉗，鑽，剪刀，快乾膠，軟布及砂紙等。
- 模型內並不包括塑料膠水和顏料。
- 謹防小孩吸吮塑料零件，或者將塑料袋套在頭上，制作時應將套材遠離小孩接觸。

Decal Application:

1. Cut off decal from sheet.
2. Dip the decal in tepid water 40C for about 10 second and place on a clean cloth.
3. Hold the backing sheet edge and slide decal onto the model.
4. Move decal into position by wetting decal with finger.
5. Press decal gently down with a soft cloth until excess water and air bubbles are gone.

水貼紙使用方法：

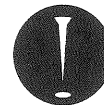
1. 從水貼紙上剪下印花；
2. 將印花放入溫水中浸10秒，然後放在乾布上。
3. 拿著印花紙轉移到模型上；
4. 濕著手指將印花移到適當的位置；
5. 用軟布輕壓印花直至水乾及汽泡消失。



Glue
使用強力膠



Weight
配重



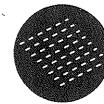
Make hole
鑽孔



Cut/remove
切除



Bend
彎曲



File/sand
銼平



Option
選擇



No glue
不要搽膠水

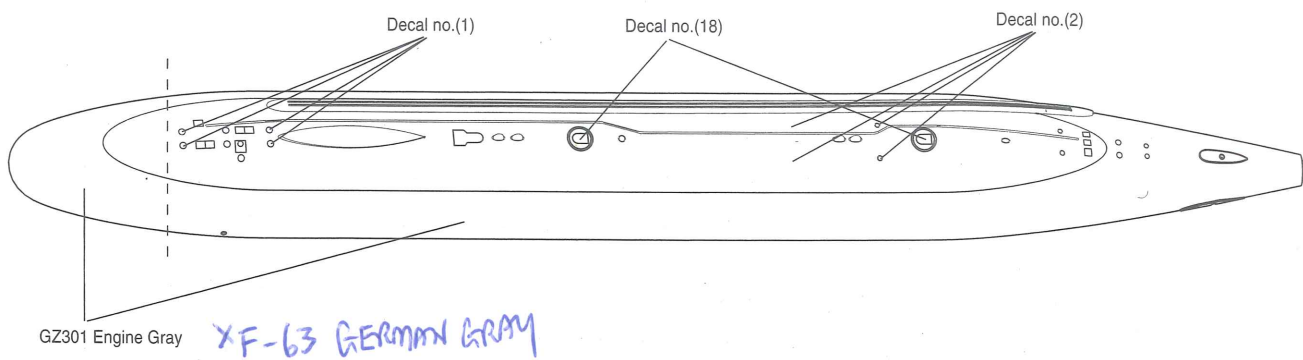


Decal
貼紙

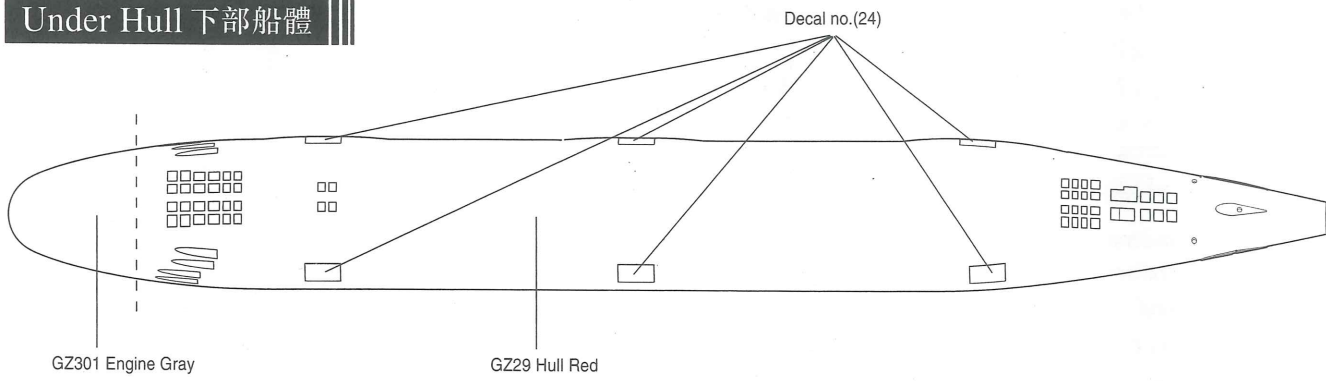
威駿模型
Bronco Models

Workshop 16A, 25/F, Well Fung
Industrial Centre, 68 Ta Chuen Ping
Street, Kwai Chung, N.T., Hong Kong
e-mail: info@bronco-model.com
www.bronco-model.com

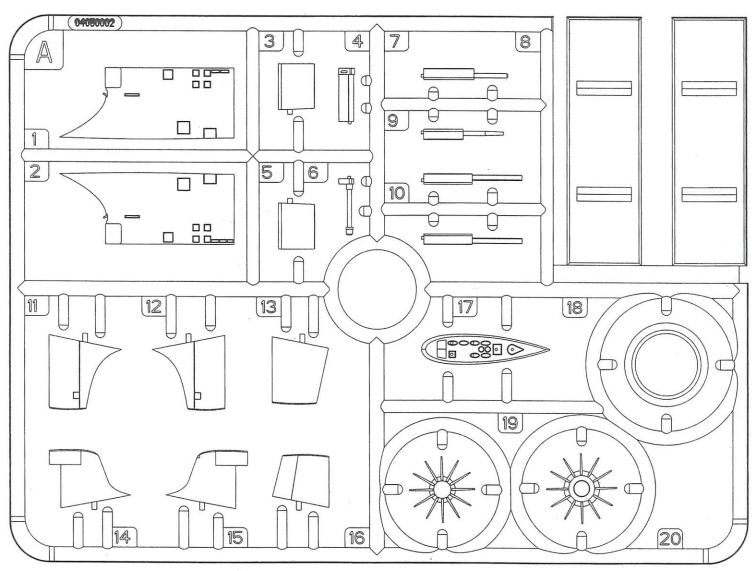
Upper Hull 上部船體



Under Hull 下部船體



Parts A 組件 A



Stand 架子

