

# Bell XHSL-1

## 1/72 scale resin model kit

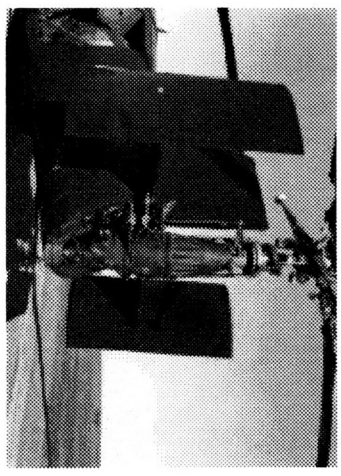
### #AA-2043

In 1950, the U.S. Navy launched a competition for a new helicopter to be designed specifically for the Anti-Submarine Warfare role as the existing helicopter inventory could not accomplish the ASW mission. Bell proposed its first and only tandem-rotors design, the Model 61, and won the competition. A contract was signed for three prototypes which were designated XHSL-1. First flight was made in 1953. Performance in the air was judged acceptable, so 78 production helicopters were ordered by the U.S. Navy and Britain Fleet Air Arm. In 1955, the first carrier trials were made and it was found the HSL-1 suffered high noise levels that limited the sonar operator's ability to identify contacts. The noise problem led to a production cut, the cancellation of the follow-on order and the Navy ordered the Sikorsky HSS-1 instead. The remaining helicopters were used for mine-sweeping, training or as spares until the end of 1960. None of them were equipped and used operationally for ASW.

#### Specifications:

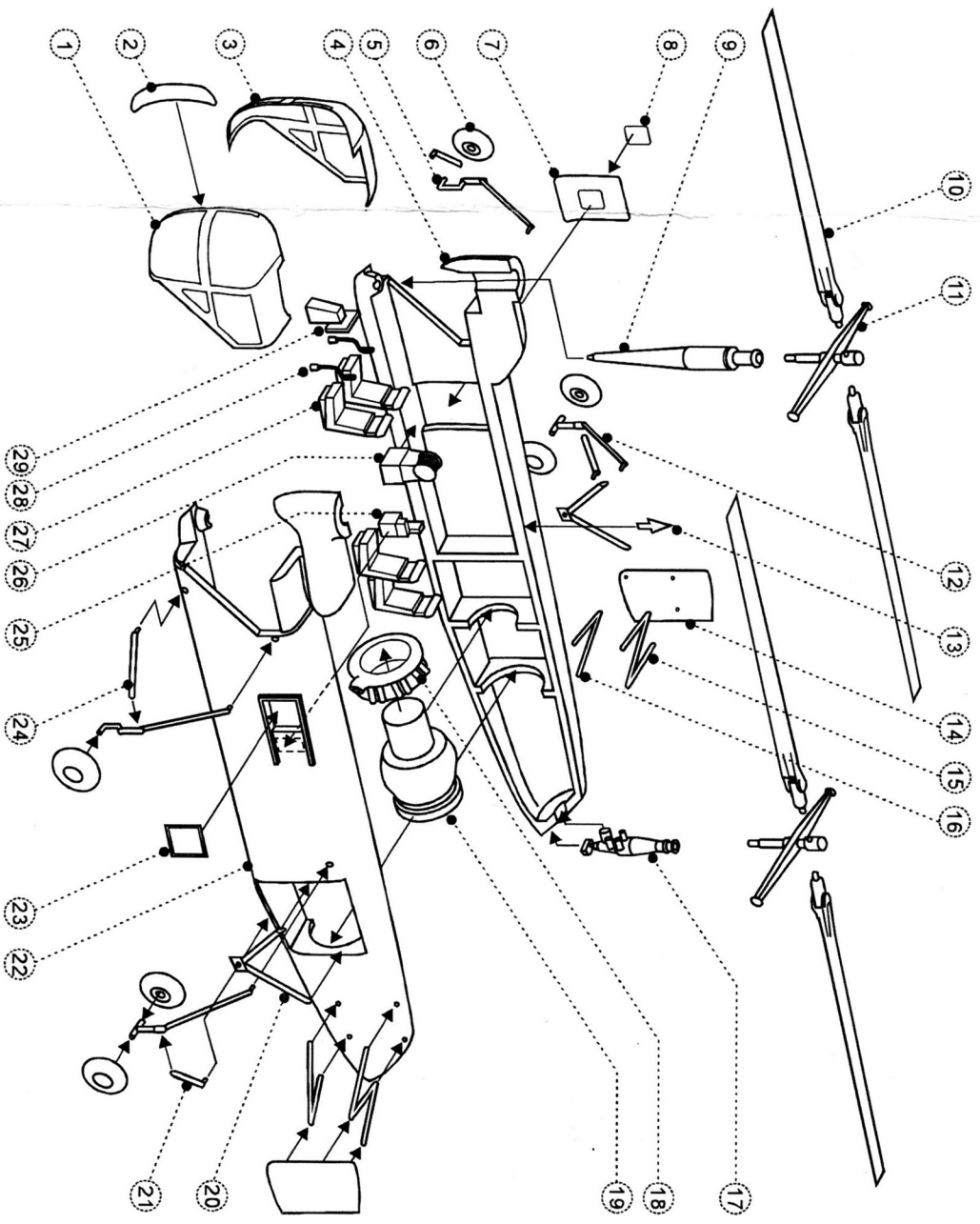
- Rotor Dia. - 51ft.6in.
- Length - 40ft.
- Width - 11ft.8in.
- Height - 14ft.5in.
- Powerplants - Pratt & Whitney R-2800-50 engine
- Crew - 4
- Max speed - 135 mph
- Armament - Planned Fairchild AUM-2 air-to-surface missiles

Six production models were modified for mine-sweeping role with single stabilizing fin installed on the top of rear fuselage.



**ANIGRAND**  
CRAFTSWORK

PO Box 40, Texaco Road, NTI,  
Hong Kong.  
E-mail : [email@anigrand.com](mailto:email@anigrand.com)  
Web : <http://www.anigrand.com>

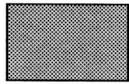


- 1 Pilot window (clear) x 1
- 2 Nose flap x 1
- 3 Co-pilot window (clear) x 1
- 4 Starboard fuselage x1
- 5 Fore landing gear x 2
- 6 Wheel x 6
- 7 Crew door x 1
- 8 Door window x 1
- 9 Fore rotor pylon x 1
- 10 Rotor blade x 4
- 11 Rotor mast x 2
- 12 Aft landing gear x 2
- 13 AT-141 UHF x 1
- 14 Fin x 2
- 15 Fin upper brace x 2
- 16 Fin lower brace x 2
- 17 Aft rotor pylon x 1
- 18 Exhaust manifold x 1
- 19 Engine x 1
- 20 Engine bay brace x 2
- 21 Aft landing gear brace x 2
- 22 Port fuselage x 1
- 23 Sonar operator window (clear) x 1
- 24 Fore landing gear brace x 2
- 25 Sonar receiver x 1
- 26 Sonar reel x 1
- 27 Crew seat x 4
- 28 Control stick x 2
- 29 Instrument panel x 1

# Painting & Decals



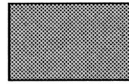
Dark sea blue  
(Fuselage)



Silver  
(Rotor masks)  
(Engine nacelle)  
(Wheel hubs)



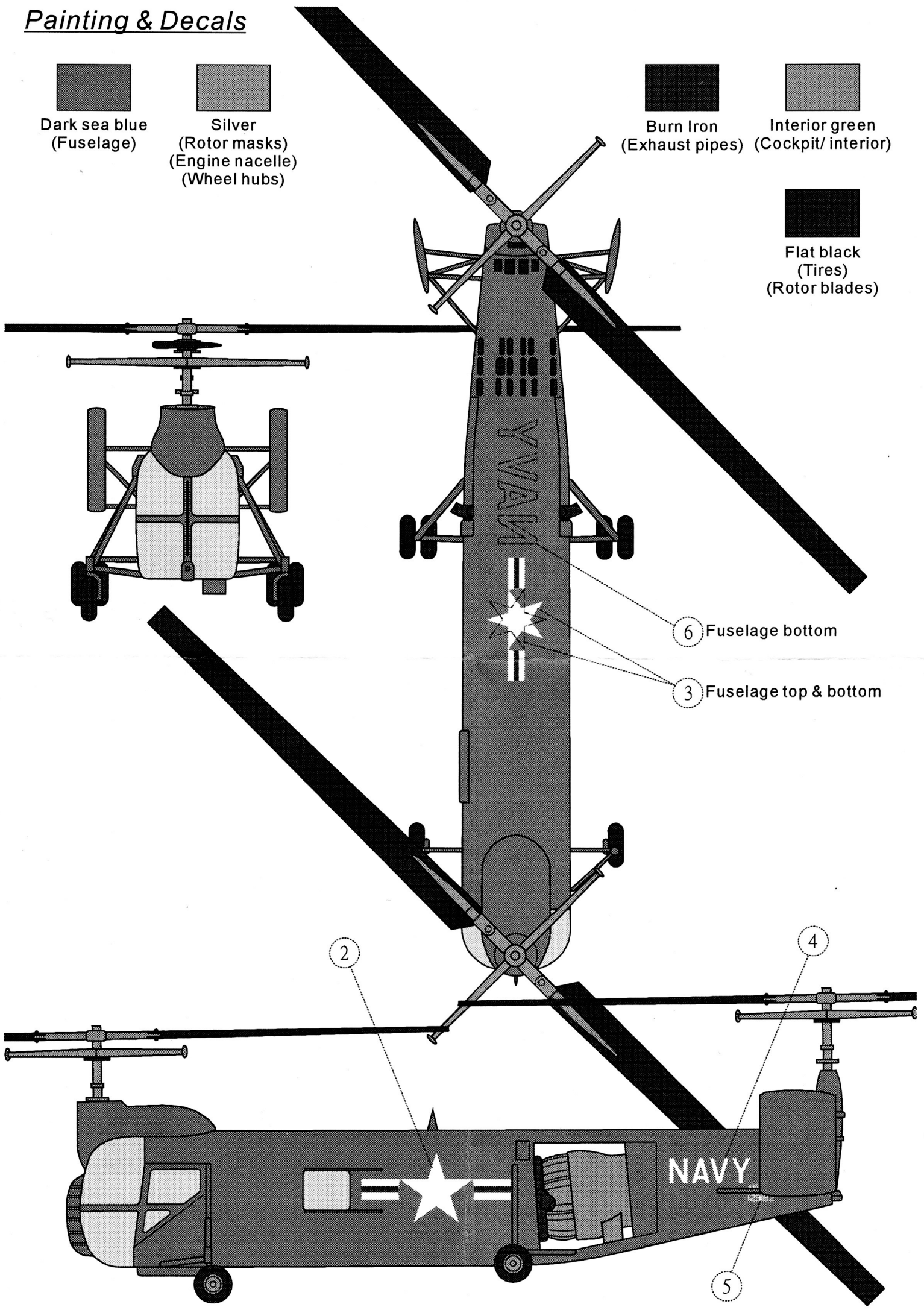
Burn Iron  
(Exhaust pipes)



Interior green  
(Cockpit/ interior)



Flat black  
(Tires)  
(Rotor blades)



6 Fuselage bottom

3 Fuselage top & bottom

2

4

5