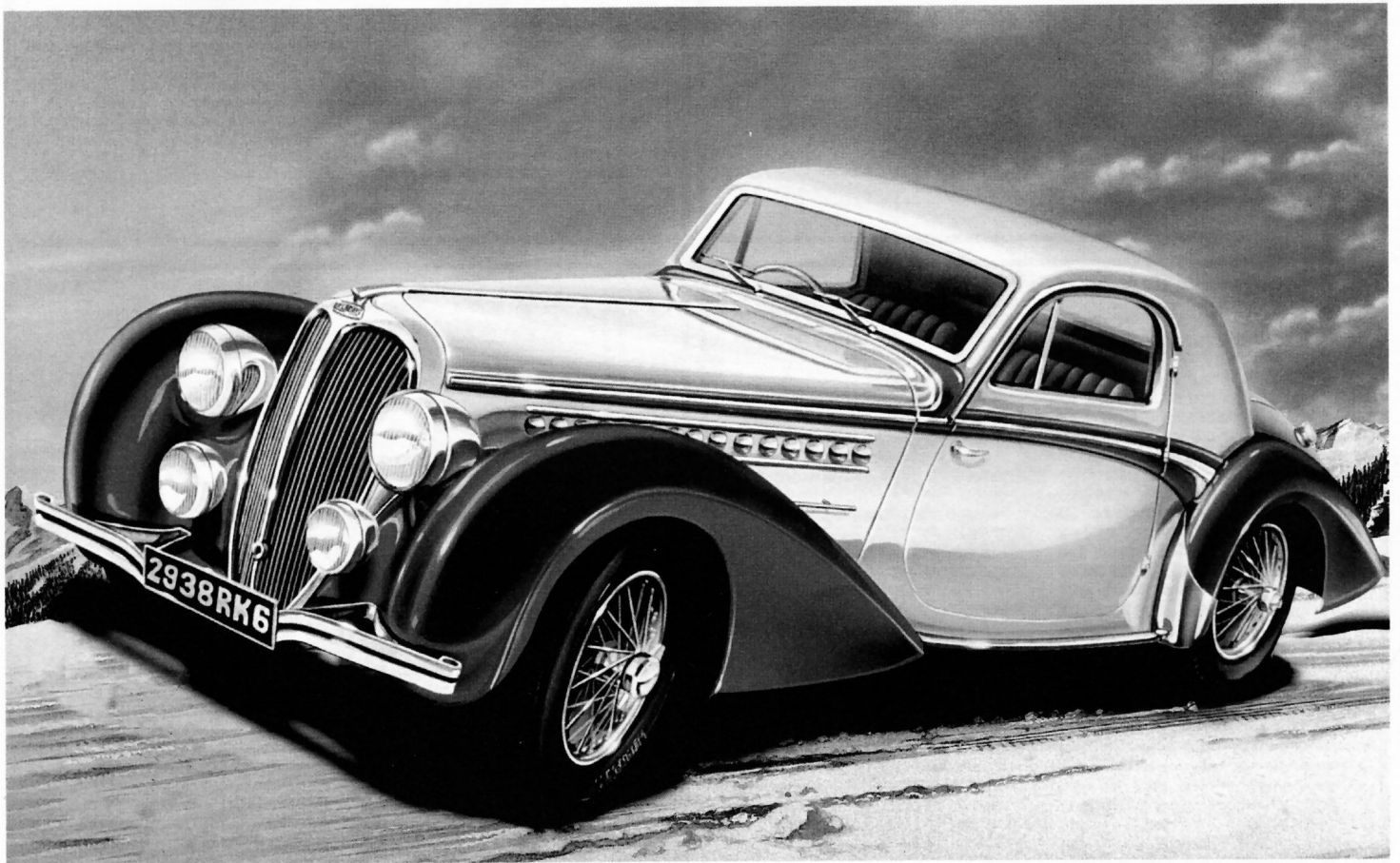


# DELAHAYE 135



80707

**F**

DELAHAYE, l'une des plus anciennes marques française d'automobiles, fut créée par Emile DELAHAYE en 1845, elle présente son premier véhicule en 1894. Capable de gagner le Rallye de MONTE-CARLO, remporter la Coupe des Alpes, d'enlever les Vingt-Quatre Heures du Mans et de promener paisiblement une famille le dimanche à la campagne, les DELAHAYE 135 étaient vraiment des voitures à tout faire. Ces résultats avaient été obtenus grâce à un châssis-moteur exceptionnel de 20 cv, crée en 1935 par « Monsieur Charles » et son ingénieur Jean FRANÇOIS. Pendant près de vingt ans, de 1935 à 1955, ces châssis moteur seront des bases idéales pour les carrossiers français (Chapron, Figoni, les frères Antem, Laoutchik, Guilloré, Franay) qui rivaliseront de courbes et de chromes pour pouvoir accéder chaque année à la place la plus enviée, la « Plaque Tournante » placée à l'entrée du Salon de l'Automobile.

**CARACTERISTIQUES**

Nombres de cylindres : 6  
Cylindrée : 3557 cm3  
Puissance : 115cv  
Carburateur :  
Solex à starter, 3 carburateurs inversés  
Boîte de vitesses :  
électromagnétique « CROTAL »  
à 4 vitesses  
Embrayage :  
disque unique à sec  
Direction :  
par vis et écrous réglé  
Suspension AV :  
roues indépendantes  
Suspension AR :  
ressorts à lames semi-elliptiques  
Freins :  
auto-ajustables sur les 4 roues  
Équipement électrique : 12 volts  
Réservoir d'essence AR : 100 l  
Voie AV : 1,400 m  
Voie AR : 1,472 m  
Empattement : 2,950 m

**GB**

DELAHAYE, one of the oldest marques in the French motor industry, was founded by Emile Delahaye in 1845 and brought out the first car in 1894. The DELAHAYE 135 was a true all-purpose vehicle, able as it was to win the Monte Carlo Rally, the Alpine Trophy and the Le Mans Twenty-Four Hours as well as take the family out for a Sunday spin in the country. These results were possible thanks to the exceptional 20 HP chassis/motor combination designed in 1935 by « Monsieur Charles » and his engineer Jean FRANÇOIS. For nearly twenty years, between 1935 and 1955, this chassis/motor provided an ideal base for French body designers (Chapron, Figoni, the Antem brothers, Laoutchick Guilloré and Franay) who battled with each other body curves and chrome to try to reach each year the most coveted trophy of all: the revolving display dais at the entrance to the Paris Motor Show.

**SPECIFICATIONS**

Cylinders : six  
Stroke volume : 3557 cm3  
Horsepower : 115 HP  
Carburetor :  
Solex type with starter; 3 downdraft carbors  
Gearbox :  
« CROTAL » four-speed electromagnetic  
Clutch : single dry plate  
Steering : screw type  
Front suspension :  
independent wheel type  
Rear suspension :  
quarter elliptic springs  
Brakes :  
self-servo on all four wheels  
Electrical supply : 12 volts  
Rear fuel tank capacity : 100 l  
Front wheelbase : 1.400 m  
Rear wheelbase : 1.472 m  
Overall wheelbase : 2.950 m

**D**

DELAHAYE ist eine der ältesten französischen Auto-Marken, sie wurde im Jahre 1845 von Emile DELAHAYE gegründet und stellte in 1894 ihren ersten Wagen vor. Die DELAHAYE 135 sind in stande die Rallye von MONTE-CARLO zu gewinnen, sowie den Alpenpokal, die 24 Stunden von LE MANS und die Familie sonntags gemütlich auf dem Lande zu fahren; mit diesen Wagen konnte man wirklich Alles mögliche machen. Dies konnte dank einem ausgezeichneten im Jahre 1935 von « Herrn Charles » und seinem Ingenieur Jean FRANÇOIS gebauten Motor-Fahrgestell von 20 PS erreicht werden. Während fast 20 Jahren, von 1935 bis 1955, sind diese Motoren-Fahrgestelle eine ideale Basis für die französischen Karosserie-fabrikanten (Chapron, Figoni, die Brüder Antem, Laoutchik Guilloré, Franay), die mit ihren Kurven und Chrome konkurrierten, um jedes Jahr den begehrten Platz « die Drehscheibe » am Eintritt der Autoausstellung zu erreichen.

**TECHNISCHE DATEN**

Zylinderanzahl : 6  
Motorhubraum : 3557 cm3  
Stärke : 115 PS  
Vergaser :  
Solexvergaser und Starter mit 3 Fallstrom;  
Getriebegehäuse :  
elektromagnetisch « CROTAL »  
mit 4 Gängen  
Kupplung :  
eine einzige Trocken-Kupplungsscheibe  
Steuerung :  
durch Schraube und Regelmutter  
Vorderrad : Einzelaufhängung  
Bremsen :  
Selbstschliessend an 4 Rädern  
Elektrische Ausrüstung : 12 Volt  
Tank am Hinterteil : 100 L  
Spur vorn : 1,400 m  
Spur hinten : 1,472 m  
Achsstand : 2,950 m

**RU**

ДЕЛАЙЕ, одна из самых старых французских автомобильных марок, была создана Эмилем ДЕЛАЙЕ в 1845 году. Первый автомобиль был представлен в 1894 году. Оказавшись способным выиграть ралли МОНТЕ-КАРЛО, завоевать Кубок Альп, выиграть 24 часа Ле-Мана и спокойно вывезти семью на прогулку за город, DELAHAYE 135 стал воистину универсальным автомобилем. Он смог достичь этих результатов благодаря особенной раме двигателя 20 л.с., созданной в 1935 году « Госпожином Шарлем » и его инженером Жаном ФРАНЦУА. На протяжении почти двадцати лет, с 1935 по 1955 годы, эти рамы двигателя служили идеальной базой для французских конструкторов-кузовщиков (Шапрон, Фигони, братья Антем, Лаутчик, Гиоре, Франай), которые соревновались в модернизации контуров и хромированных деталей, чтобы каждый год занимать самое желанное место, выставляя автомобиль на вращающейся платформе при входе на автомобильную выставку.

**ХАРАКТЕРИСТИКИ**

Количество цилиндров : 6  
Объем цилиндра : 3557 см3  
Мощность : 115 л.с.  
Карбюратор :  
Солекс стартера,  
3 карбюратора с нисходящим потоком  
Коробка передач :  
« CROTAL » с электромагнитным  
приводом с 4 скоростями  
Сцепление :  
одна сухая дисковая муфта  
Рулевое управление :  
регулируемое посредством винтовой пары  
Передняя подвеска :  
колеса с независимой подвеской  
Задняя подвеска :  
полуэллиптическая листовая рессора  
Тормозная система :  
саморегулирующаяся на 4 колесах  
Электрооборудование : 12 вольт  
Бензобак : 100 л  
Передняя колея : 1,400 м  
Задняя колея : 1,472 м  
База : 2,950 м

**E**

DELAHAYE, una de las más antiguas marcas francesas de automóviles fue creada por Emile DELAHAYE en 1845, su primer vehículo fue presentado en 1894. Capaces de ganar el RALLY de Monte Carlo, de llevarse la Copa de Los Alpes, de triunfar en las 24 Horas de Le Mans y de pasear apaciblemente una familia el domingo por el campo, los coches DELAHAYE 135 eran verdaderamente coches para todos. Estos resultados habían sido obtenidos gracias a un chasis-motor excepcional de 20 CV, creado en 1935 por el « Señor Carlos » y su ingeniero Jean FRANÇOIS. Durante casi veinte años, de 1935 a 1955, estos chasis motor constituirán las bases ideales para los carroceros franceses (Chapron, Figoni, los hermanos Antem, Laoutchick Guilloré, Franay) quienes rivalizarán en curvas y cromos para poder acceder cada año al lugar más codiciado « la plataforma giratoria » ubicada a la entrada del Salón del Automóvil.

**CARACTERÍSTICAS**

Número de cilindros : 6  
Cilindrada : 3557 cm3  
Potencia : 115 CV  
Carburador :  
Solex con starter;  
3 carburadores-invertidos  
Caja de velocidad :  
Electro Magnética « CROTAL »  
con 4 velocidades  
Embrague : disco único seco  
Dirección :  
con tornillo y tuerca regulada  
Suspensión AV :  
ruedas independientes  
Suspensión AR :  
a resortes semi-elípticos  
Frenos :  
auto ajustable sobre las cuatro ruedas  
Equipamiento eléctrico : 12 voltios  
Tanque de gasolina AR : 100 litros  
Vía AV : 1,400 m  
Vía AR : 1,472 m  
Distancia entre ejes : 2,950 m

**NL**

DELAHAYE, één van de oudste Franse automobielenmerken werd in 1845 opgericht door Emile DELAHAYE, zij presenteerde haar eerste automobiel in 1894. In staat zijnde om de Rally van MONTE CARLO te winnen, de coupe van de Alpen te veroveren, de 24-Uur van le Mans in de Wacht te slepen, én om kalmte een gezin op zondag op het platteland rond te rijden, de DELAHAYE 135 waren werkelijk auto die voor alles geschikt waren. Deze resultaten werden behaald dankzij een uitzonderlijke chassis-motor van 20 pk, gebouwd in 1935 door « Meneer Charles » et zijn ingenieur Jean FRANÇOIS. Gedurende bijna 2 jaar, van 1935 tot 1955, zullen deze chassis-motors de ideale basis zijn voor de Franse carrosseriebouwers (Chapron, Figoni, de Gebroeders Antem, Laoutchik, Guilloré, Franay) die onderling wedijverden met stroomlijnen en chrom om ieder jaar « Het Middelpunt » te bemachtigen, de meest begeerde plaats aan ingang van de Salon van de Automobiel.

**EIGENSCHAPPEN**

Aantal cilinders : 6  
Cilinderinhoud : 3557 cm3  
Vermogen : 115 pk  
Carburateur :  
Solex met starter  
met 3 omgekeerde carburateurs  
Vernellingsbak :  
Electro-magnetische « CROTAL »  
met vernellingen  
Koppeling : 1 disc  
Stuut :  
met bijgestelde schroef en moer  
Vering voor :  
onafhankelijke wielen  
Vering achter :  
d.m.v. semi-elliptische veren  
Remmen :  
automatische remmen op 4 wielen  
Elektrische installatie : 12 volt  
Benzinetank aan de achterkant : 100 l  
Spoor voor : 1,400 m  
Spoor achter : 1,472 m  
Wielbasis : 2,950 m

**P**

DELAHAYE, uma das mais antigas marcas francesas de automóveis, foi criada por Emile DELAHAYE em 1845, apresentando o seu primeiro veiculo em 1894. Capazes de ganhar o Rally de MONTE-CARLO, vencer a Copa dos Alpes, fazer as Vinte e Quatro Horas de Le Mans e de passear calmamente uma familia aos domingos até ao campo, os DELAHAYE 135 eram verdadeiramente viaturas para todo o serviço. Estes resultados foram obtidos, graças a um chasis-motor excepcional de 20cv, criado em 1935 pelo « Senhor Charles » e o seu engenheiro Jean François. Durante cerca de vinte anos, de 1935 a 1955, estes chasis-motor foram as bases ideais para os fabricantes de carroçarias franceses (Chapron, Figoni, os irmãos Antem, Laoutchik, Guilloré, Franay), que rivalizavam nas curvas e nos cromados para poderem aceder todos os anos ao sítio mais invejado, a «Placa Giratória» colocada na entrada do Salão Automóvel.

**CARACTERÍSTICAS:**

Número de cilindros : 6  
Cilindrada : 3557 cm3  
Potência : 115cv  
Carburador :  
Solex com motor de arranque,  
3 carburadores invertidos  
Caixa de velocidades :  
Electromagnética « CROTAL »  
de 4 velocidades  
Embragem :  
Disco único a seco  
Direção :  
Por parafusos e porcas reguladas  
Suspensão dianteira :  
Rodas independentes  
Suspensão traseira :  
Molas de lãminas semi-elípticas  
Travão :  
Auto-ajustáveis nas 4 rodas  
Equipamento eléctrico : 12 volts  
Depósito da gasolina traseiro : 100 l  
Eixo dianteiro : 1,400 m  
Eixo traseiro : 1,472 m  
Distância entre eixos : 2,950 m

**I**

DELAHAYE, una fra le prime marche francesi di machine fu creata da Emile DELAHAYE nel 1845. Presento il suo primo veicolo nel 1894. Capace di vincere il Rally di MONTE-CARLO, di riportare la Coppa dei Alpi, di conseguire la vittoria delle Venti quattro ore del MANS e di portare in giro tutta la famiglia la domenica in campagna, le DELAHAYE erano machine par ogni uso. Questi risultati furono la conseguenza dello straordinario telaio motore di 20 CV elaborato nel 1935 da « Monsieur Charles » in collaborazione coll'ingegnere Jean FRANÇOIS. Per quasi vent'anni, dal 1935 al 1955, questo tipo di telai costituì una base ideale per il lavoro dei carrozzieri francesi (Chapron, Figoni, i fratelli Antem, Laoutchick, Guilloré, Franay) che gareggiarono in curve e cromi per accedere ogni anno al posto tanto desiderato sulla « Plaque Tournante », posto d'onore all'entrata del Salone dell'Automobile francese.

**CARATTERISTICHE**

Numero cilindri : 6  
Cilindrada : 3557 cm3  
Potenza : 115 CV  
Carburatori :  
Solex a starter; 3 carburatori opposti  
Cambio :  
electromagnetico « CROTAL »  
quattro rapporti  
Frizione :  
monodisco a secco  
Sterzo :  
a vite a dado regolati  
Suspensione anteriore : ruote indipendenti  
Suspensione posteriore :  
a molle semiellittiche  
Freni :  
autoserranti sulle quattro ruote  
Impianto elettrico : 12 volt  
Capacità serbatoio posteriore : 100 l  
Carreggiata anteriore : 1,400 m  
Carreggiata posteriore : 1,472 m  
Interasse : 2,950 m

PEINTURES ESSENTIELLES / ESSENTIAL PAINTS



11 Argent  
Silver  
Silber



14 Bleu de France brillant  
Gloss french blue  
Glänzend - Französischblau



22 Blanc brillant  
Gloss white  
Glänzend-Weiss



53 Gris métallique  
Gunmetal  
Metallgrau



77 Bleu marine mat  
Matt navy blue  
Matt-Marineblau



85 Noir satiné  
Satin black  
Seidenmatt-Schwarz

PEINTURES COMPLEMENTAIRES / ADDITIONAL PAINTS

Disponibles séparément chez votre revendeur de maquettes. / Available separately at you local hobby shop.



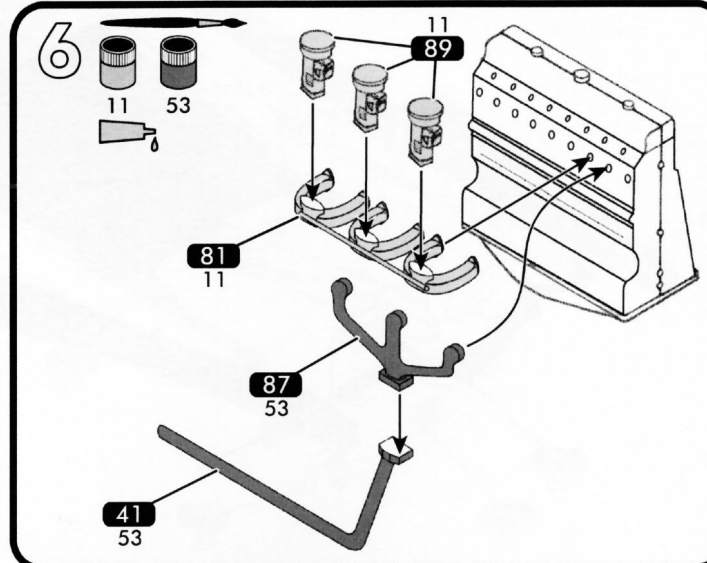
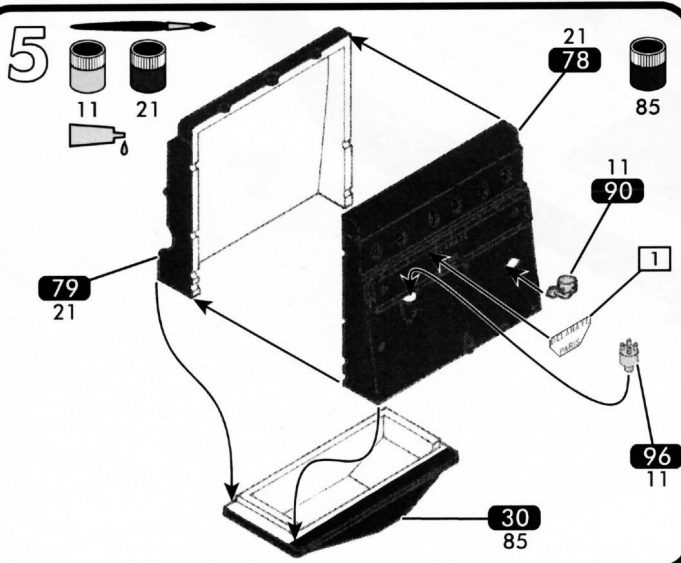
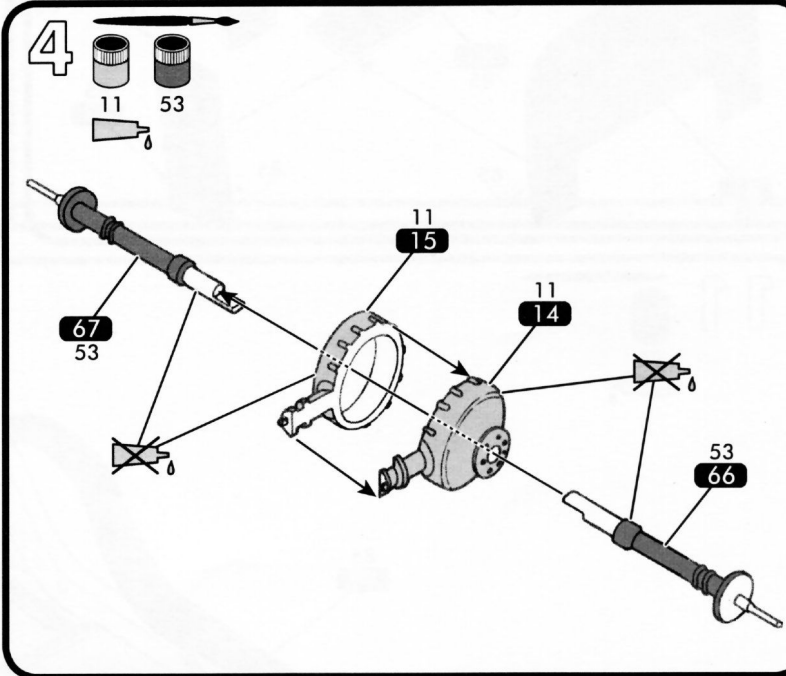
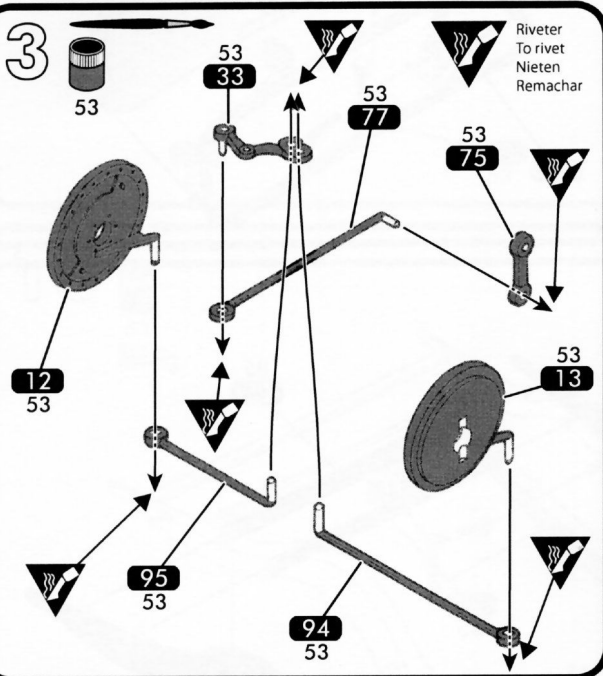
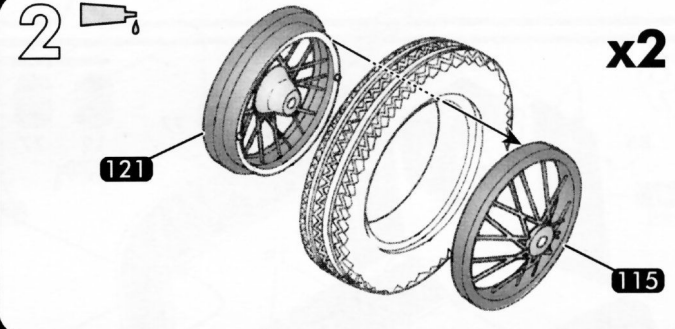
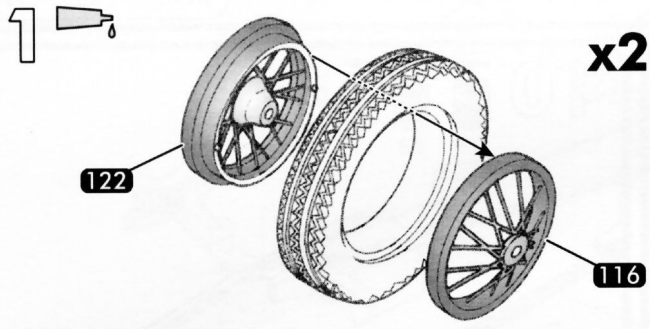
19 Rouge vif brillant  
Gloss bright red  
Glänzend-Hellrot



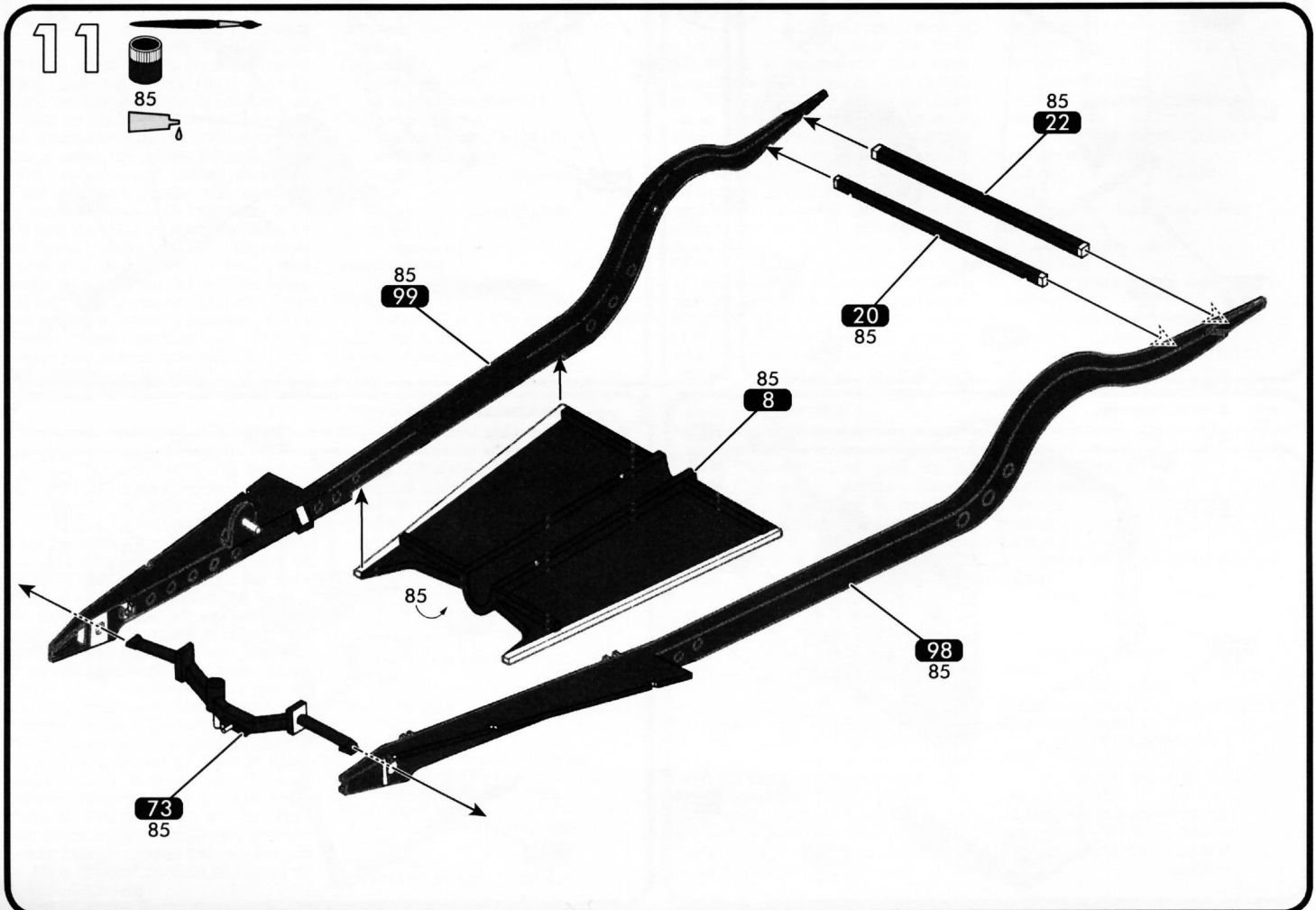
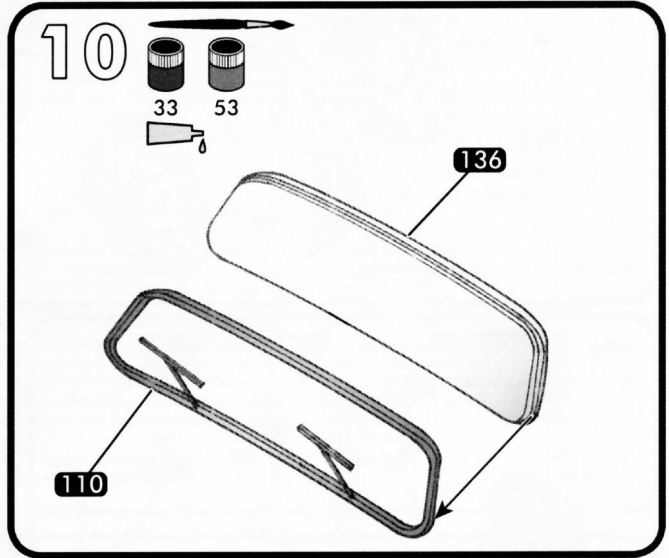
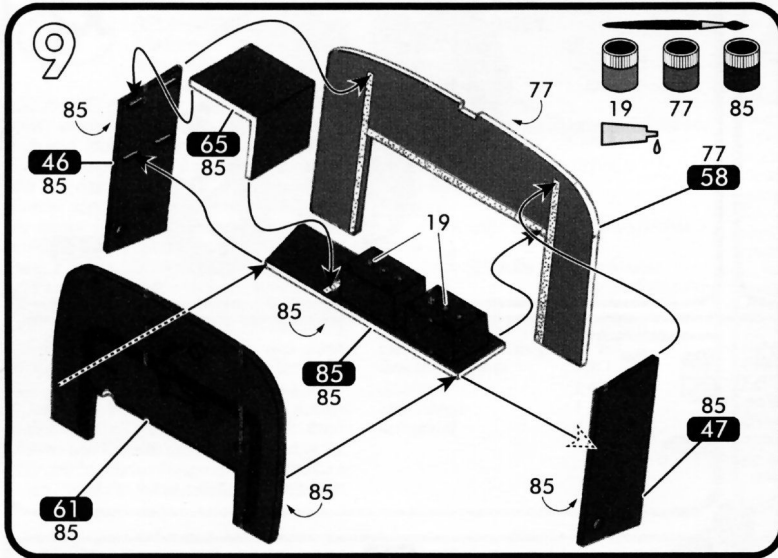
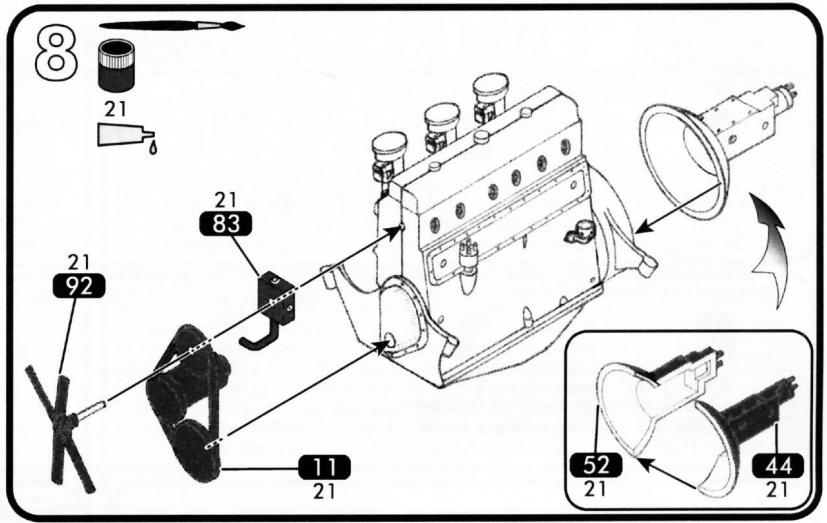
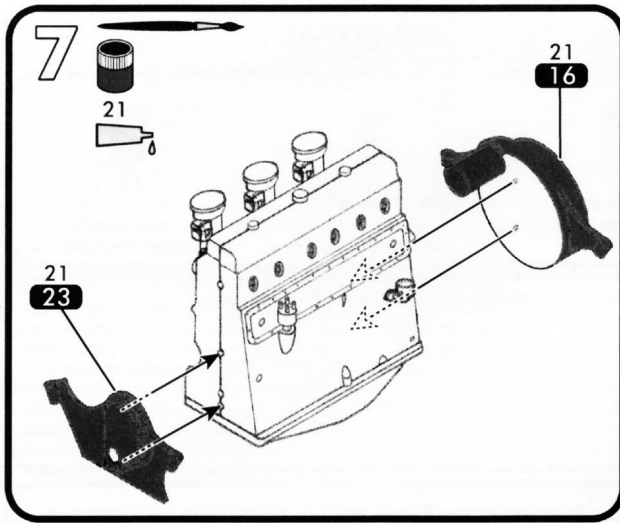
21 Noir brillant  
Gloss black  
Glänzend-Schwarz



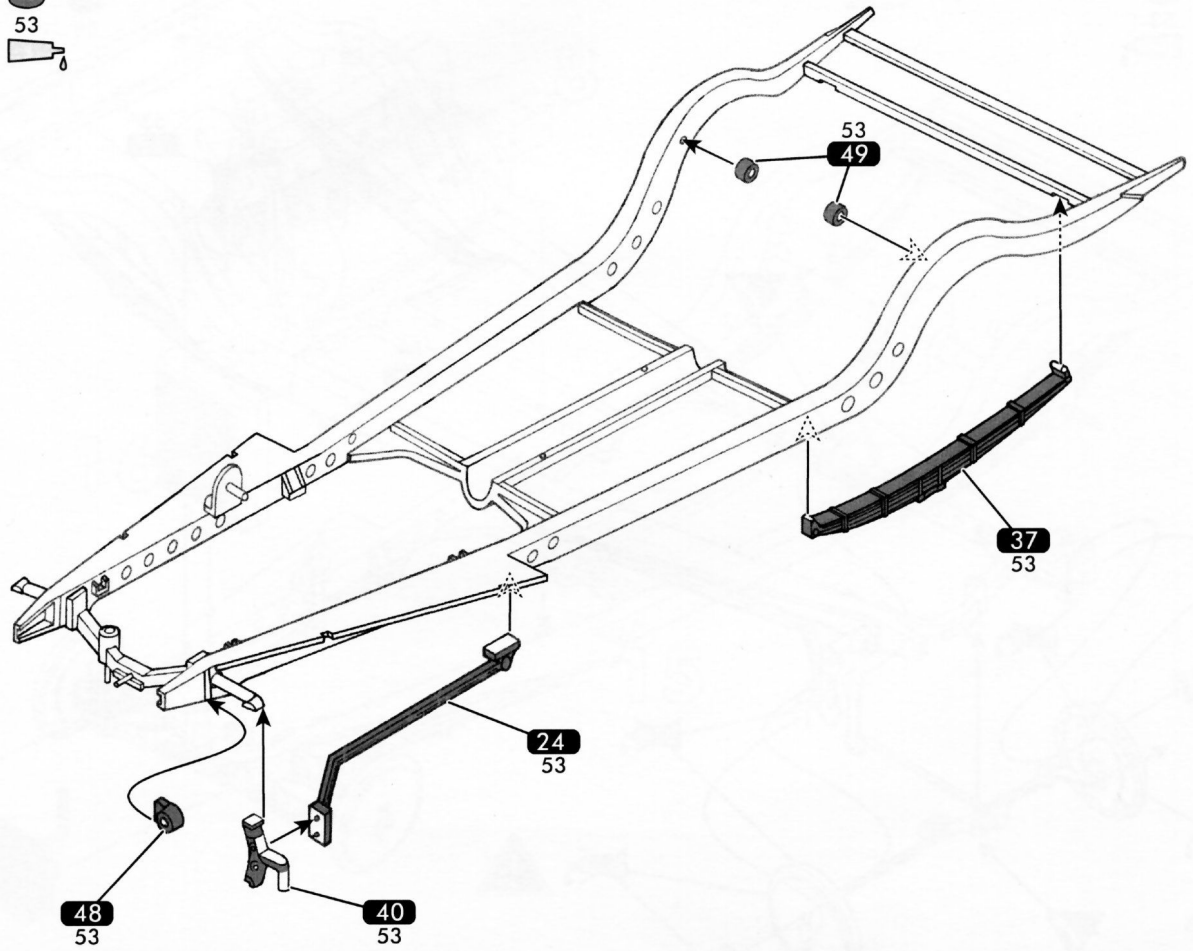
62 Cuir mat  
Matt leather  
Matt-Leder



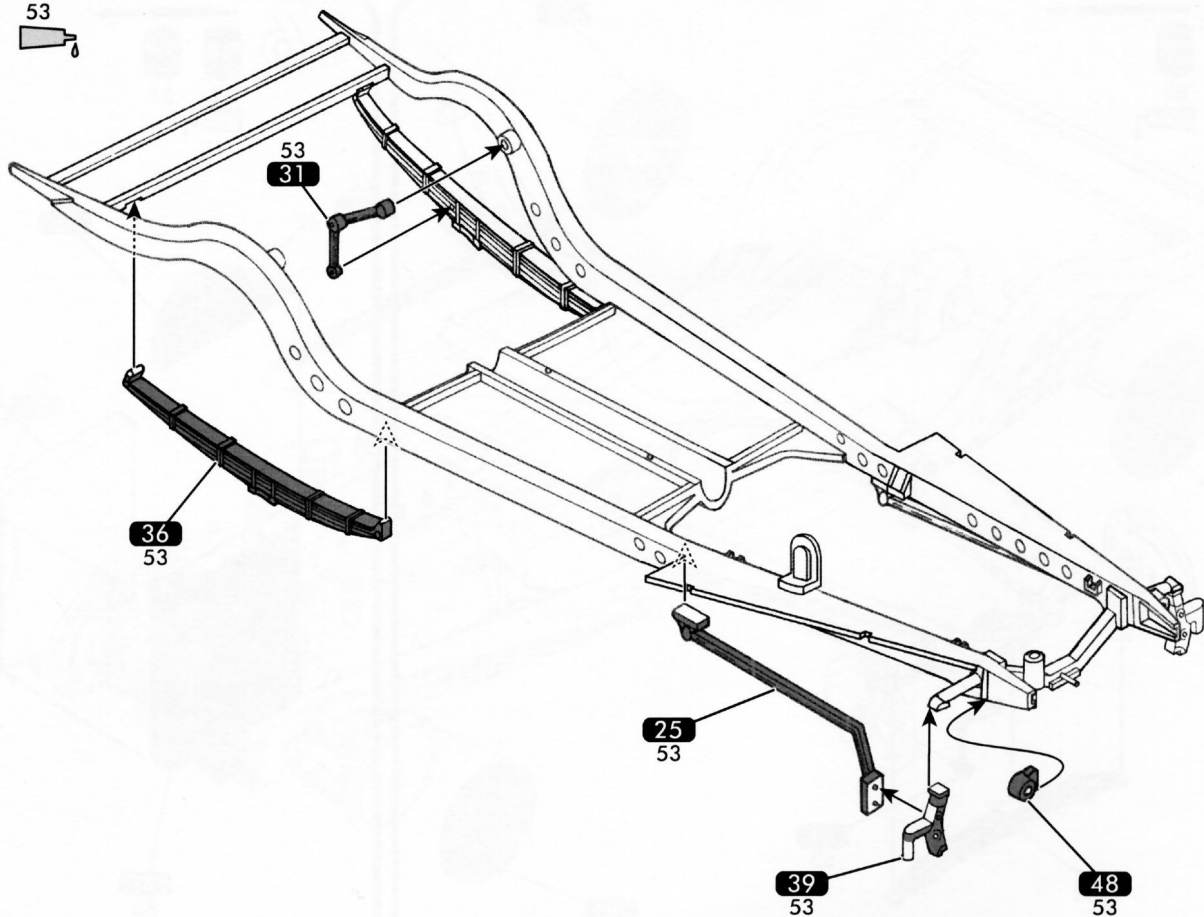
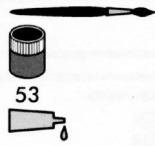
Imprimerie Heller - 80707



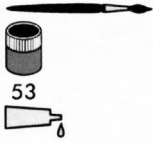
12



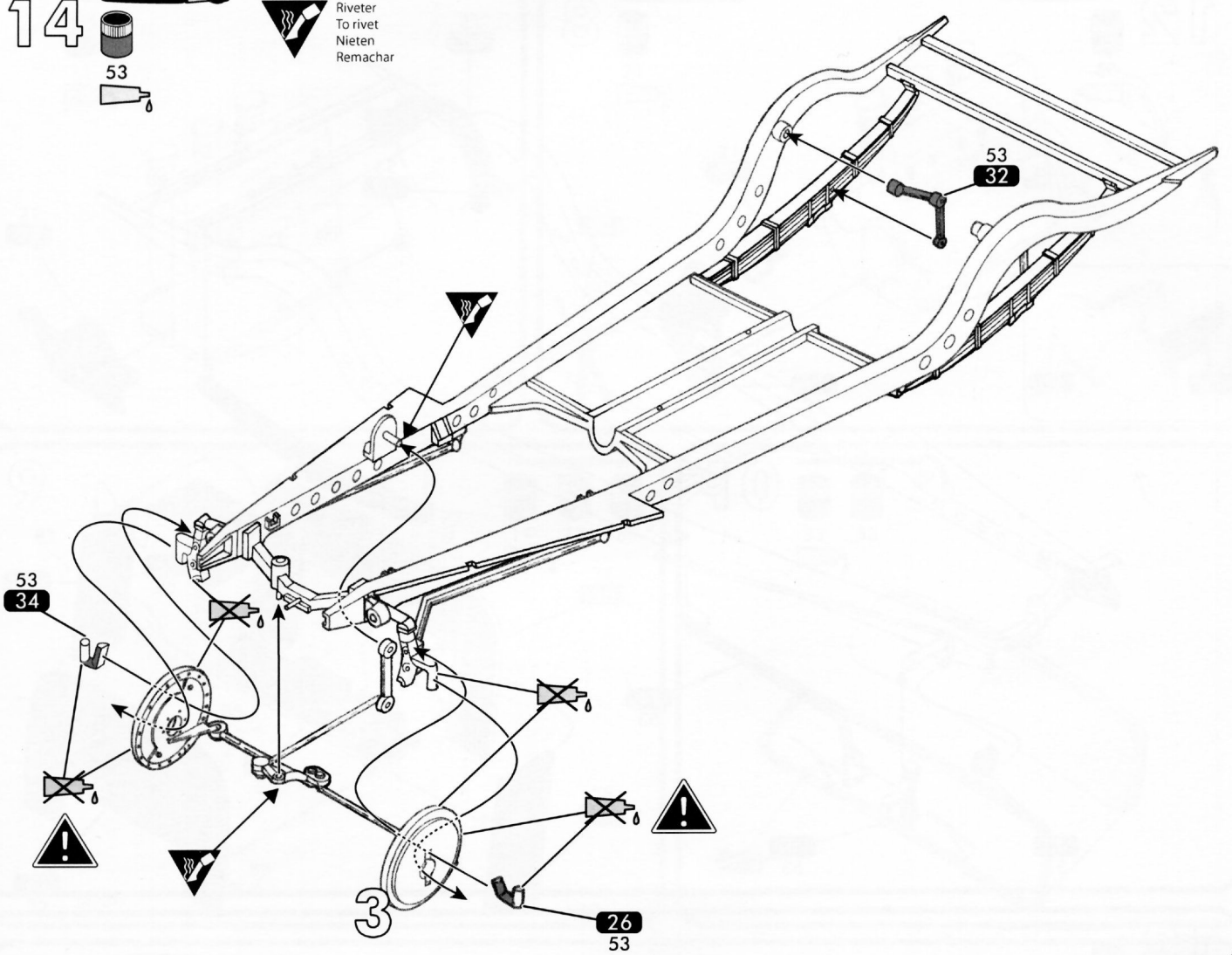
13



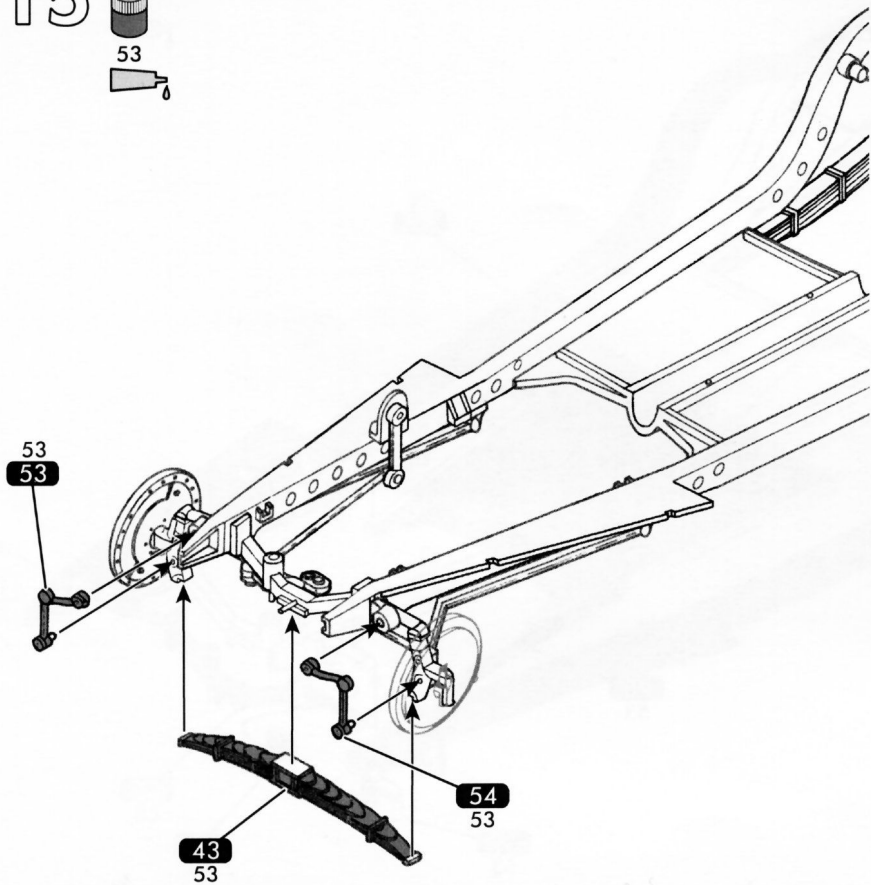
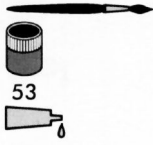
14



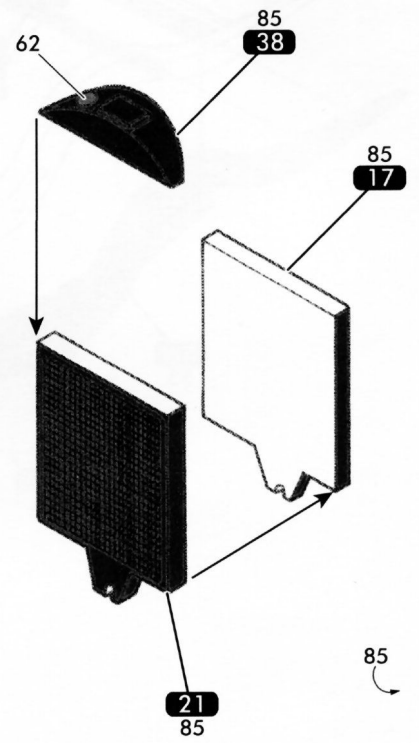
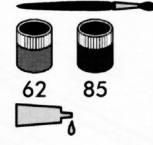
Riveter  
To rivet  
Nieten  
Remachar



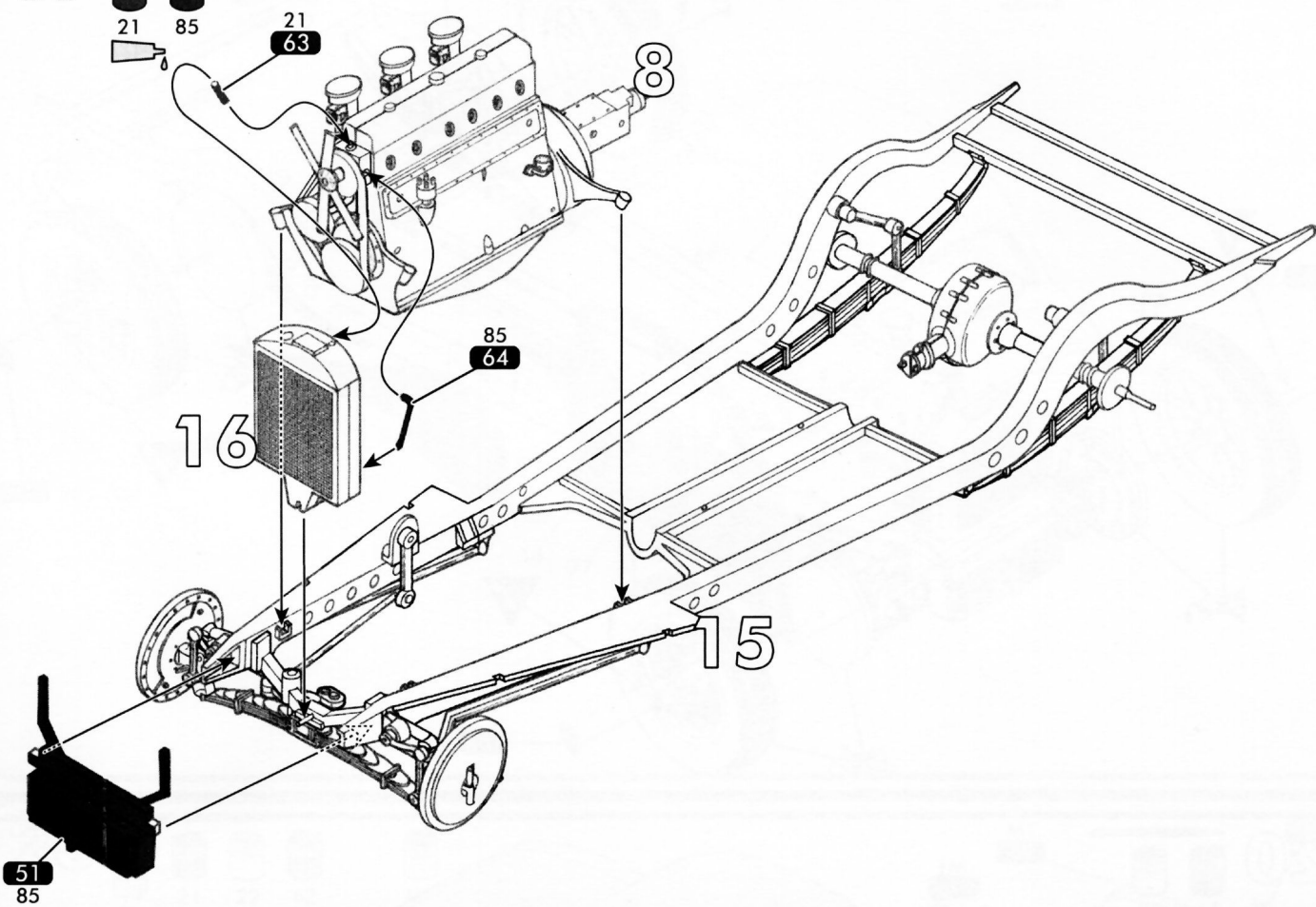
15



16



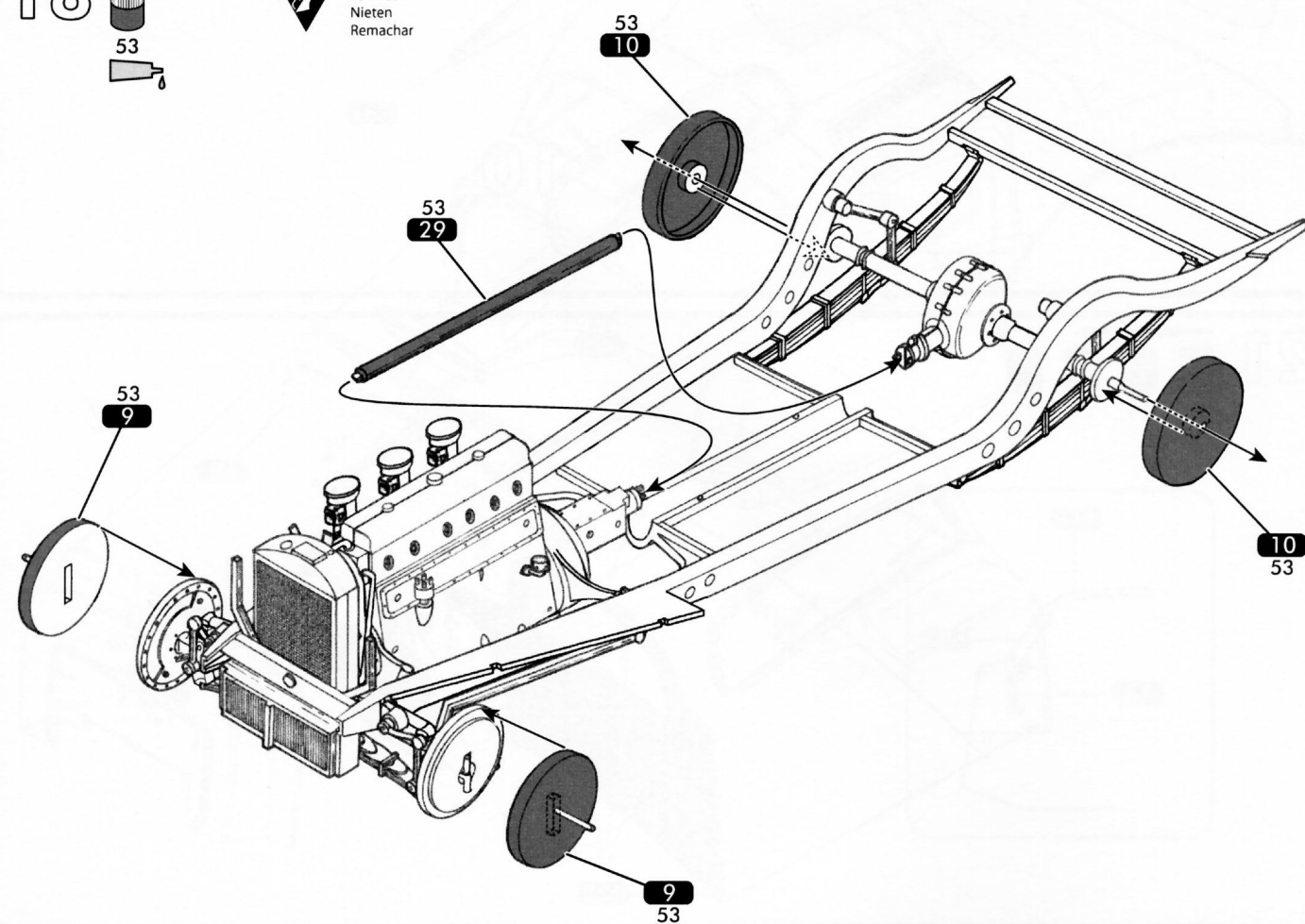
17



18



 Riveter  
To rivet  
Nieten  
Remachar



19



Riveter  
To rivet  
Nieten  
Remachar

108

2

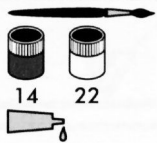
2

108

108

108

20



M1



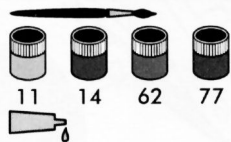
M1  
15% 14 + 85% 22

14

131

10

21



62

14

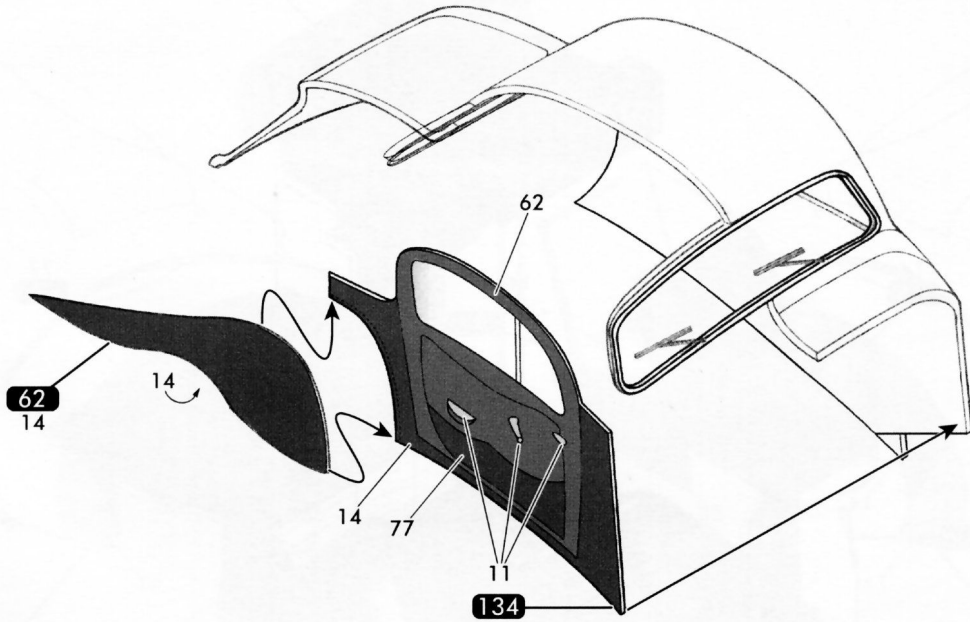
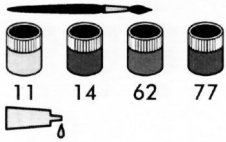
70  
14

77

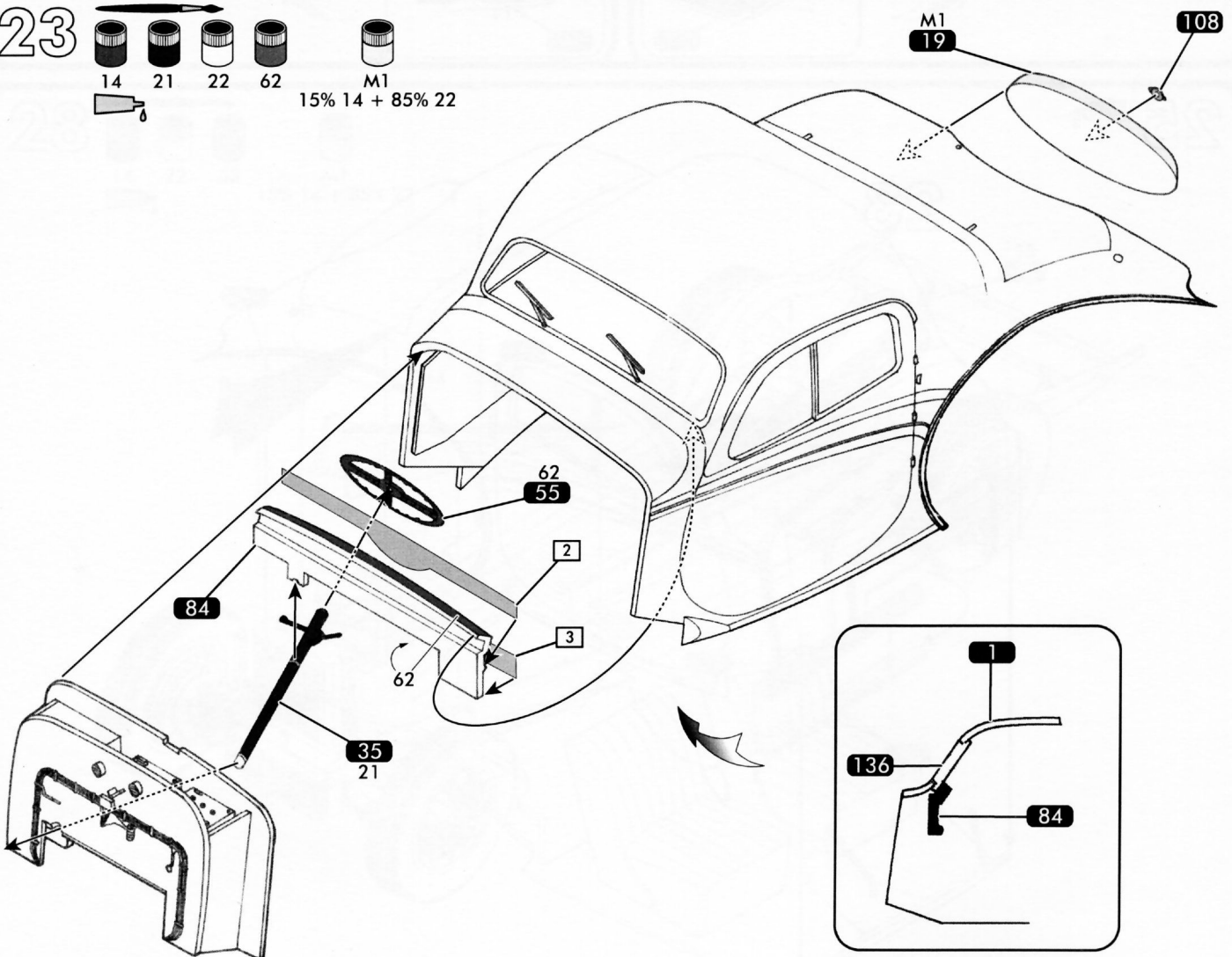
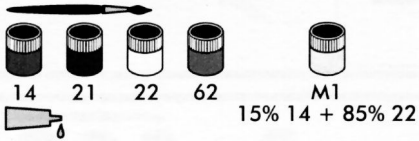
133



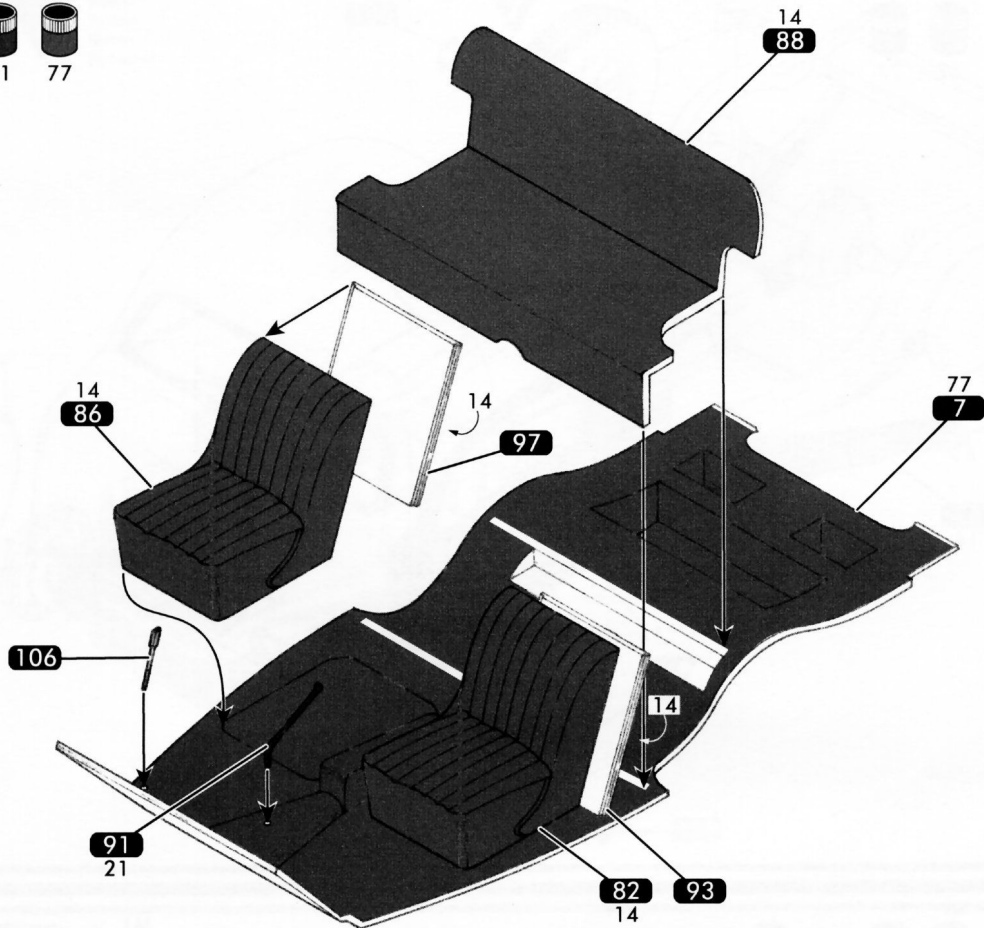
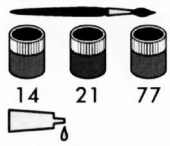
22



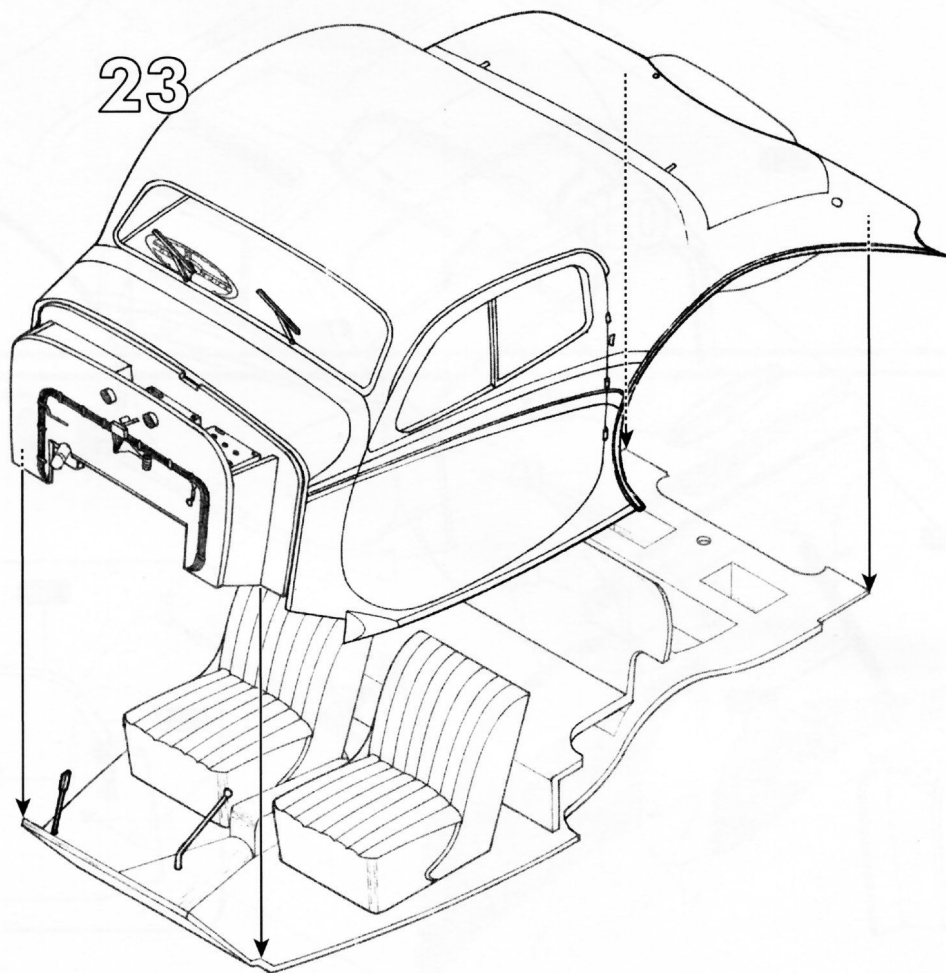
23



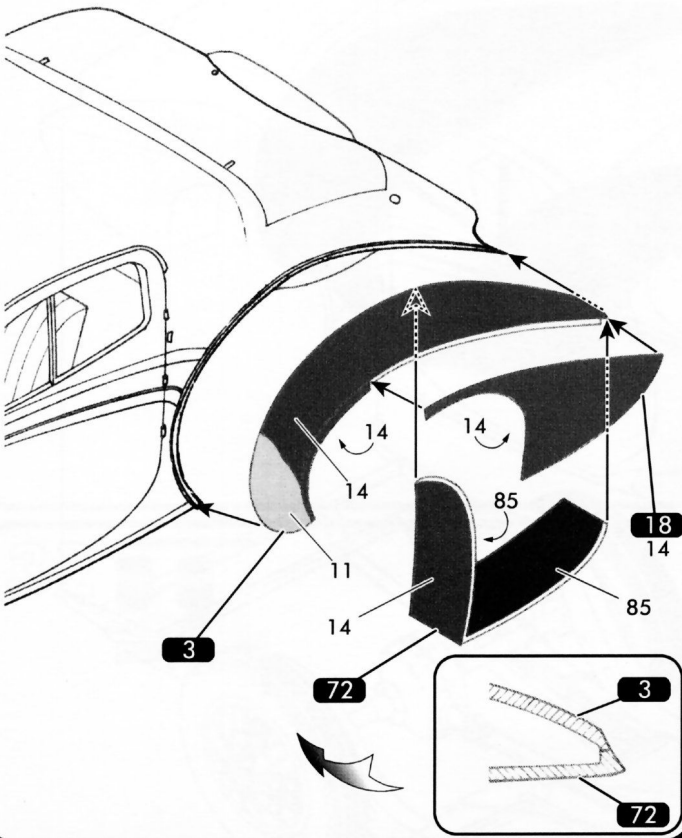
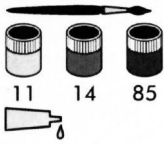
24



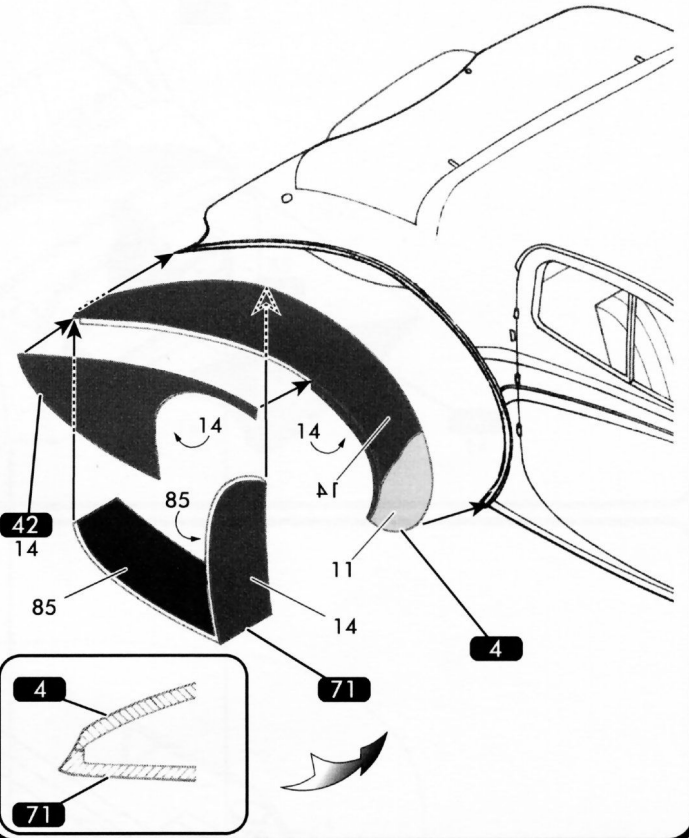
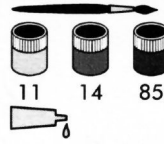
25



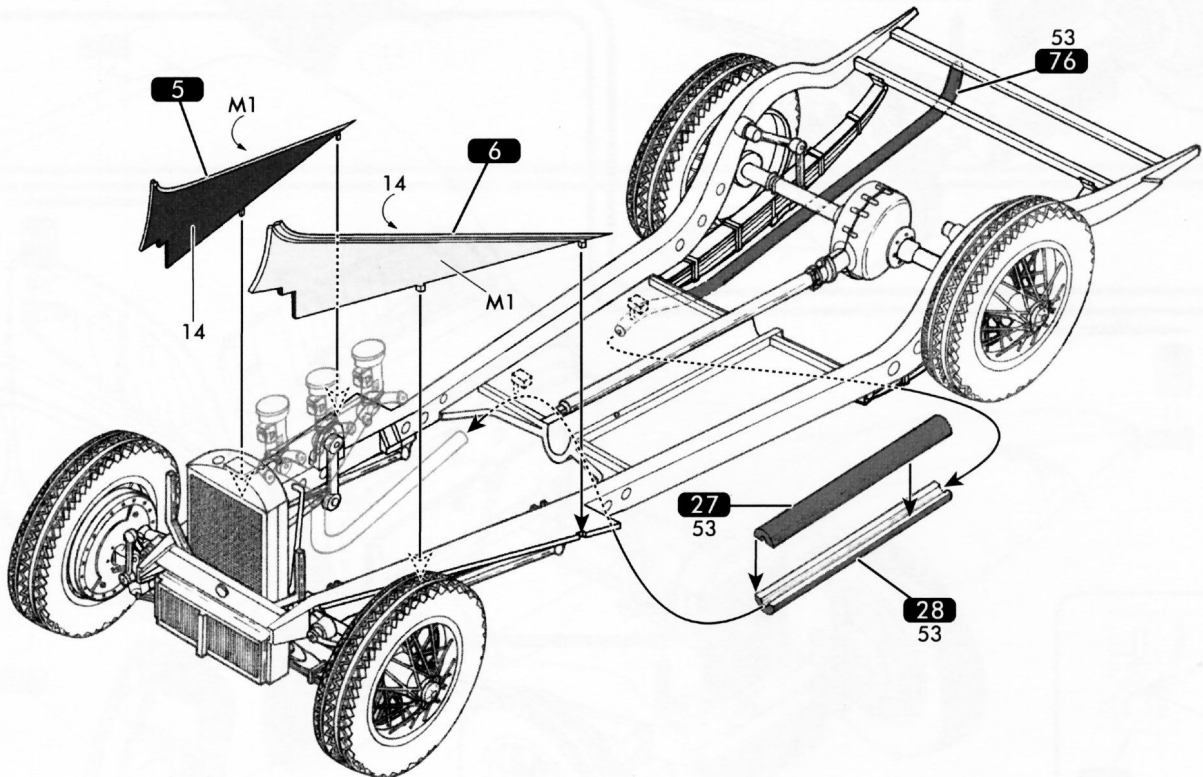
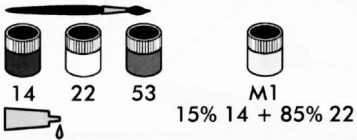
26




27

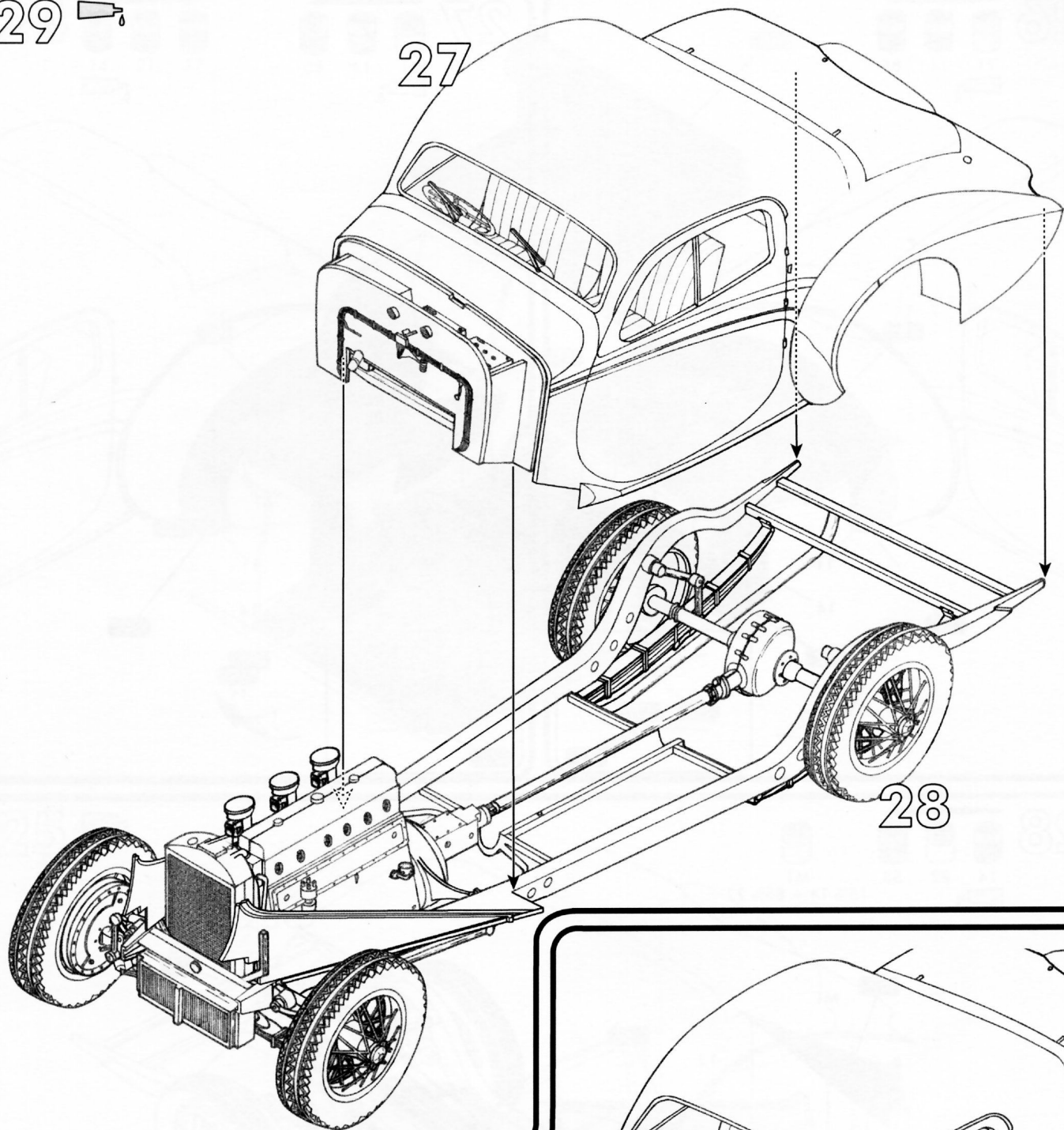


28



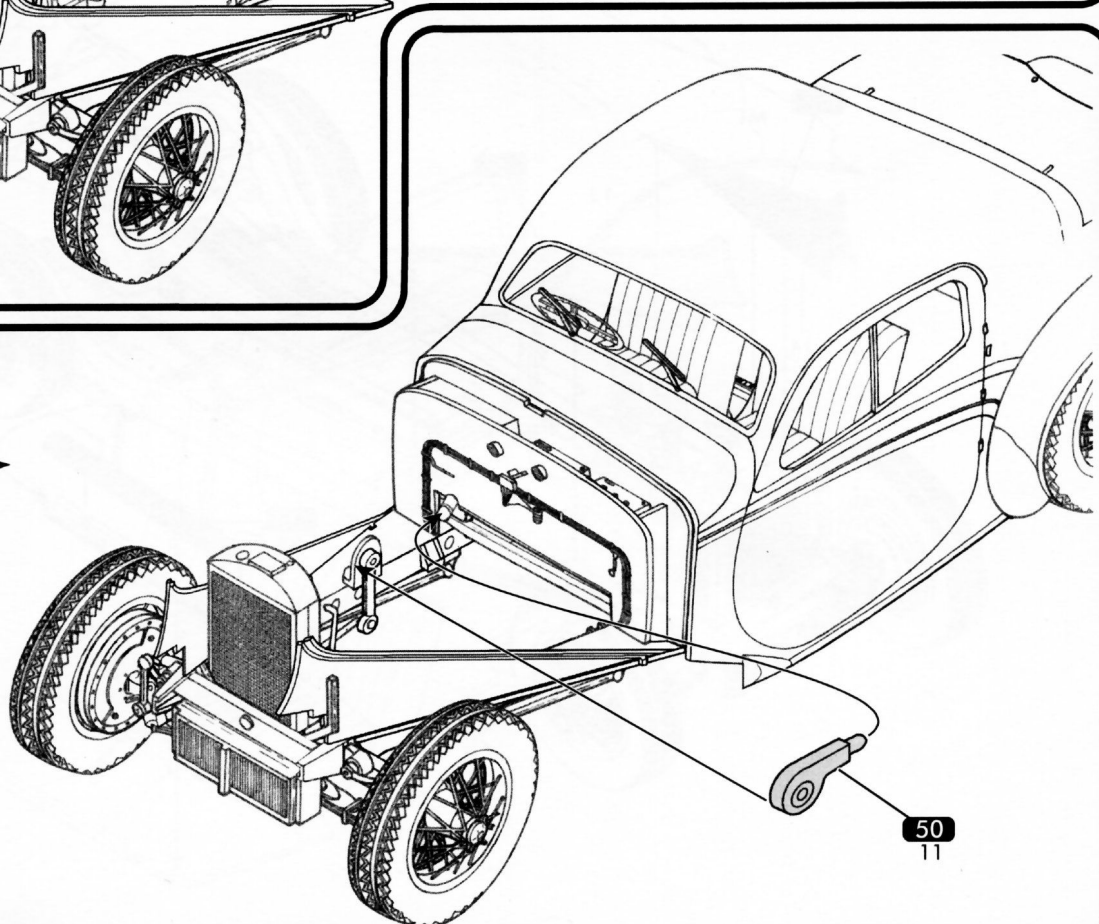
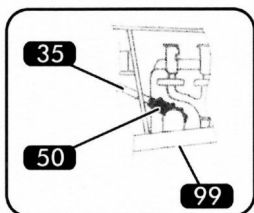
29 

27



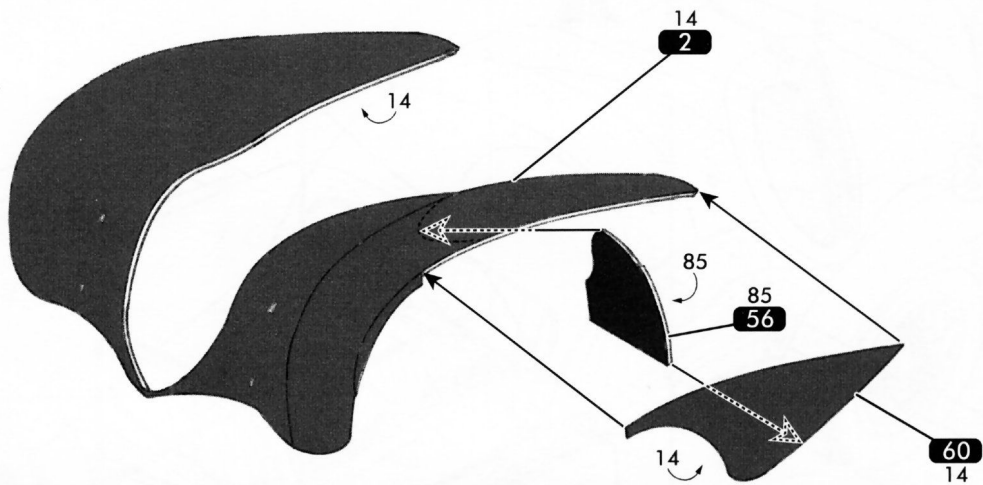
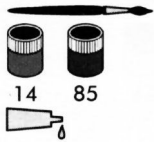
28

30 

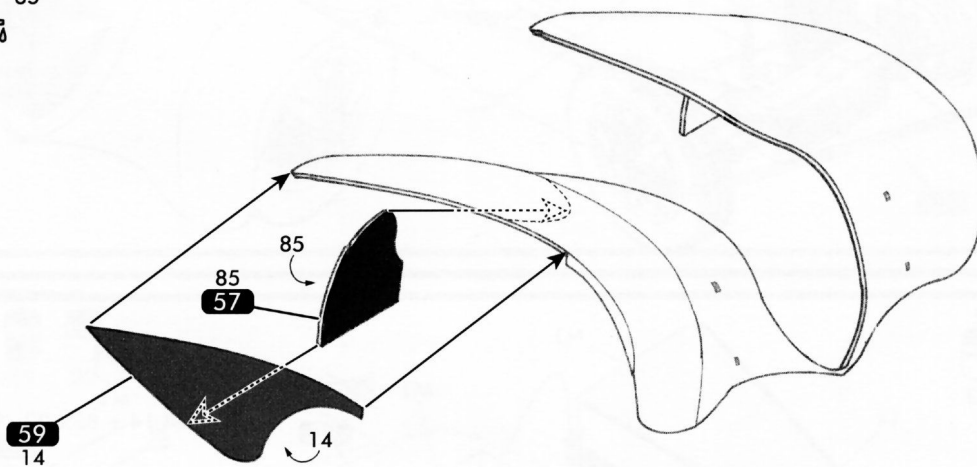
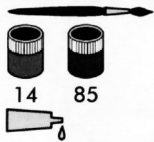


50  
11

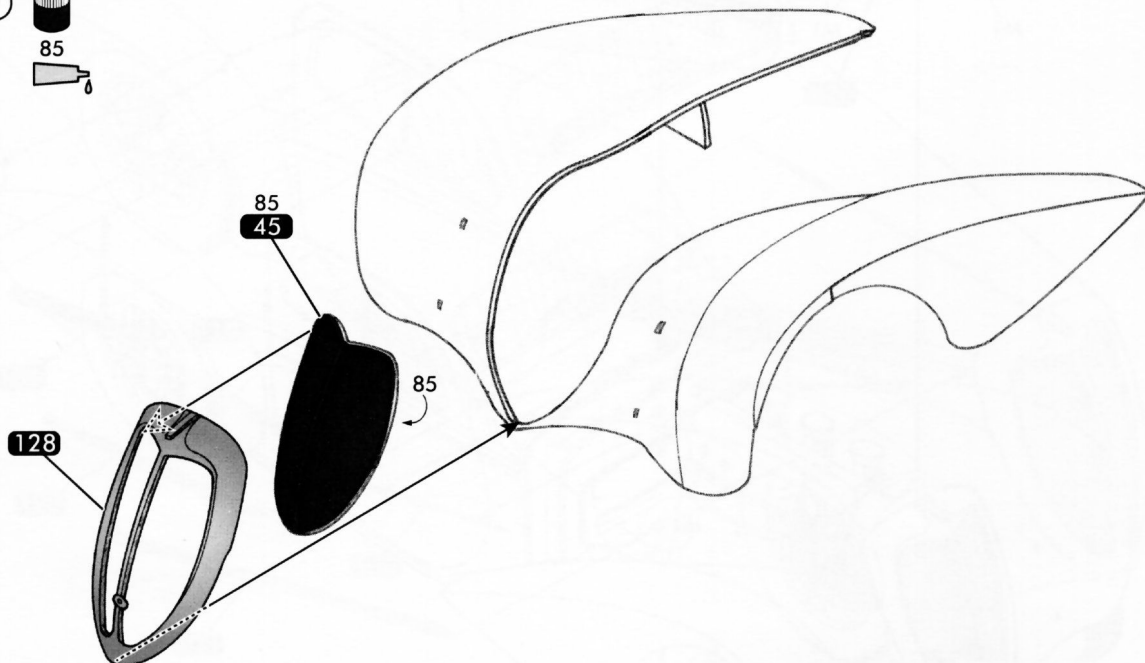
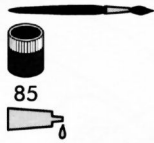
31



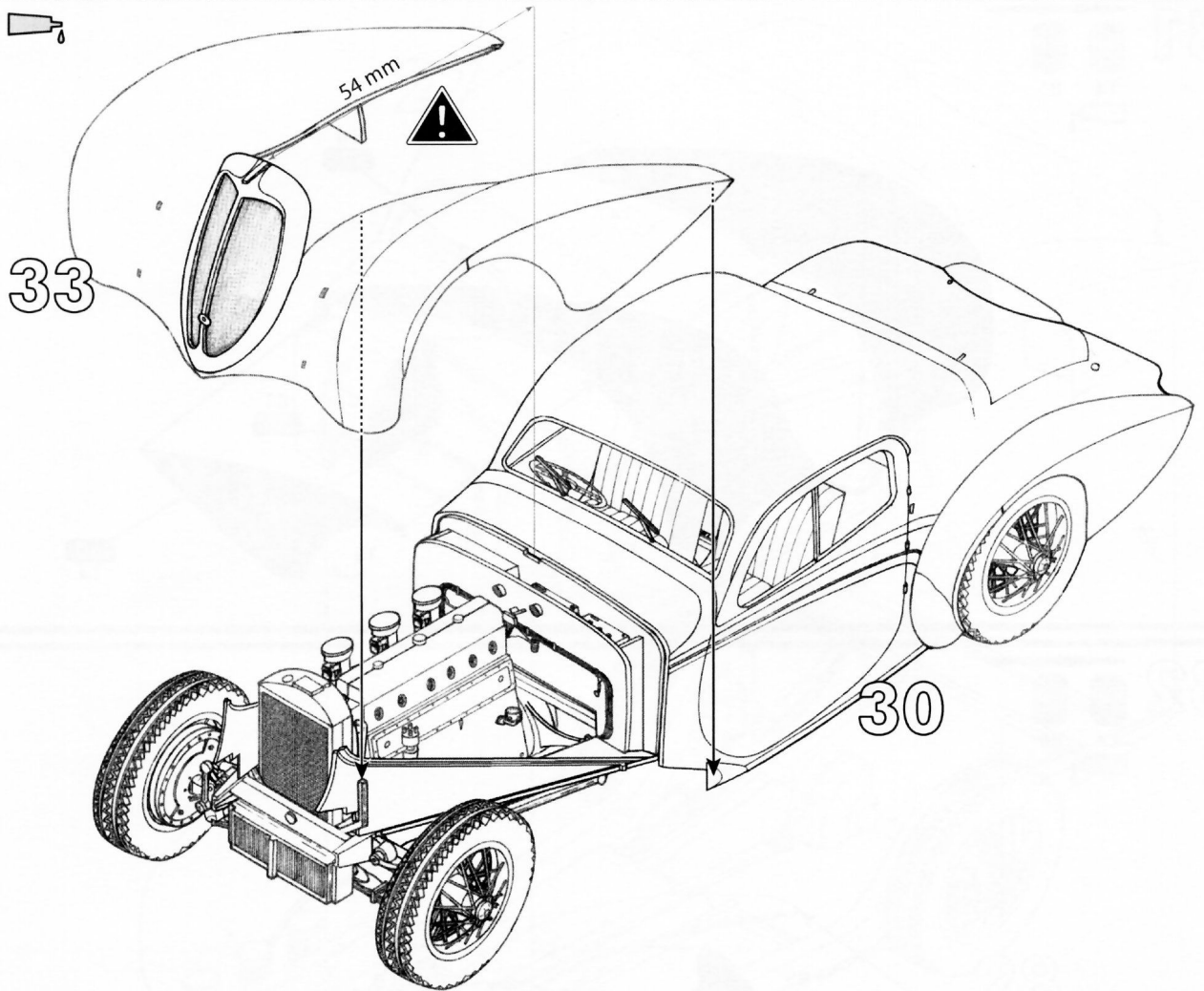
32



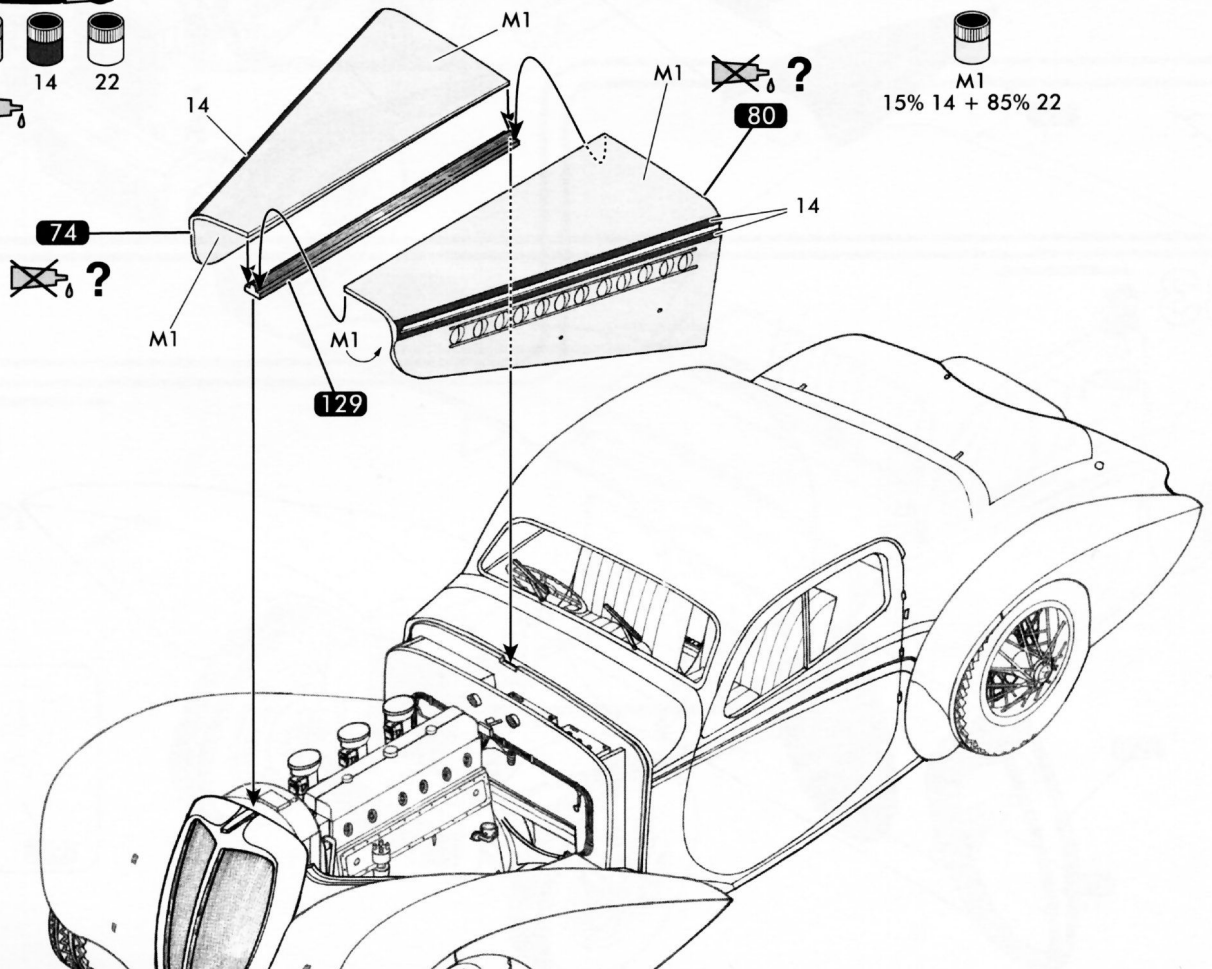
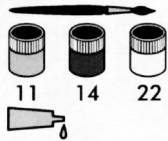
33



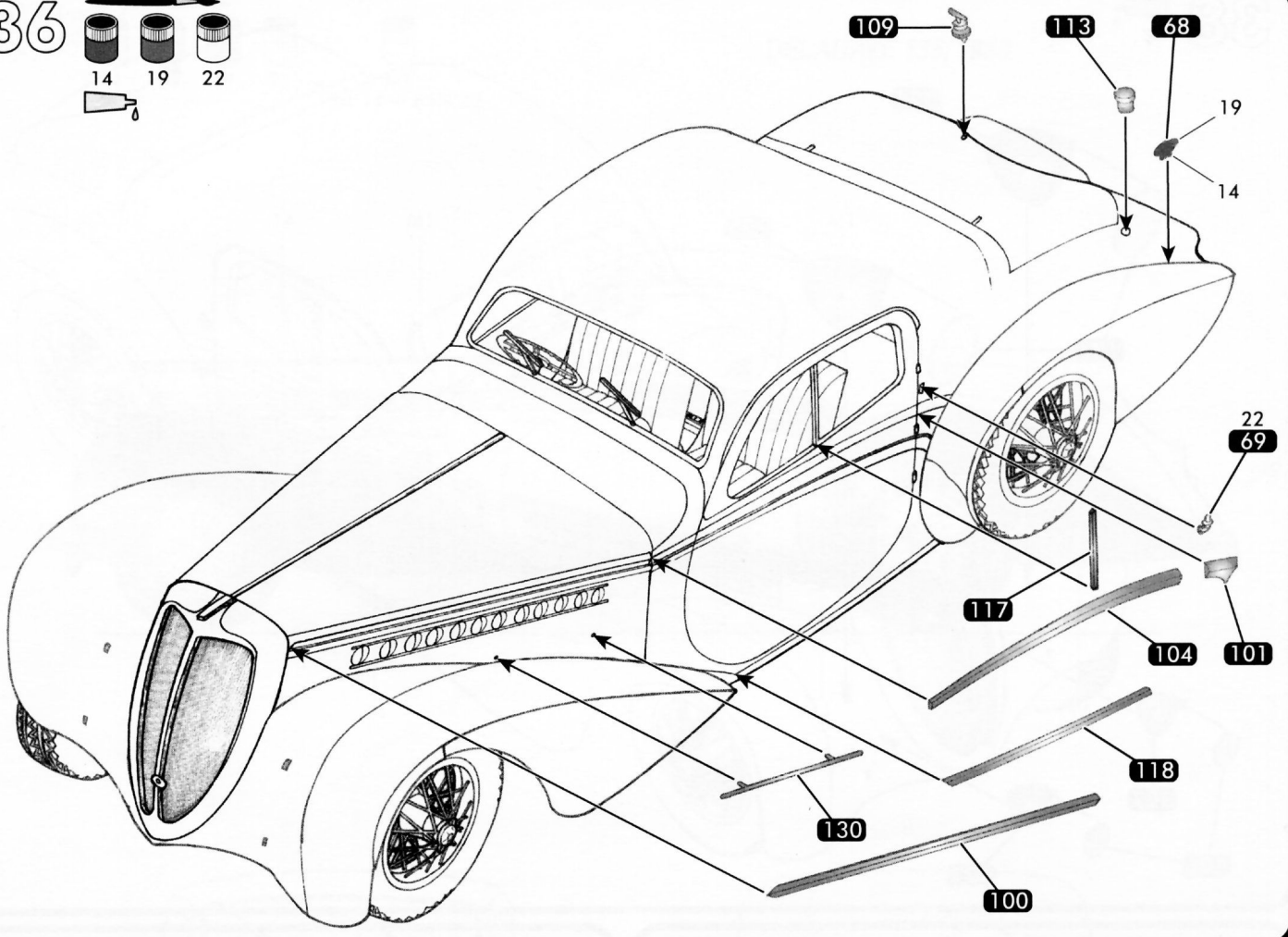
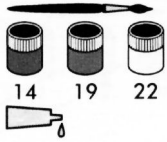
34 



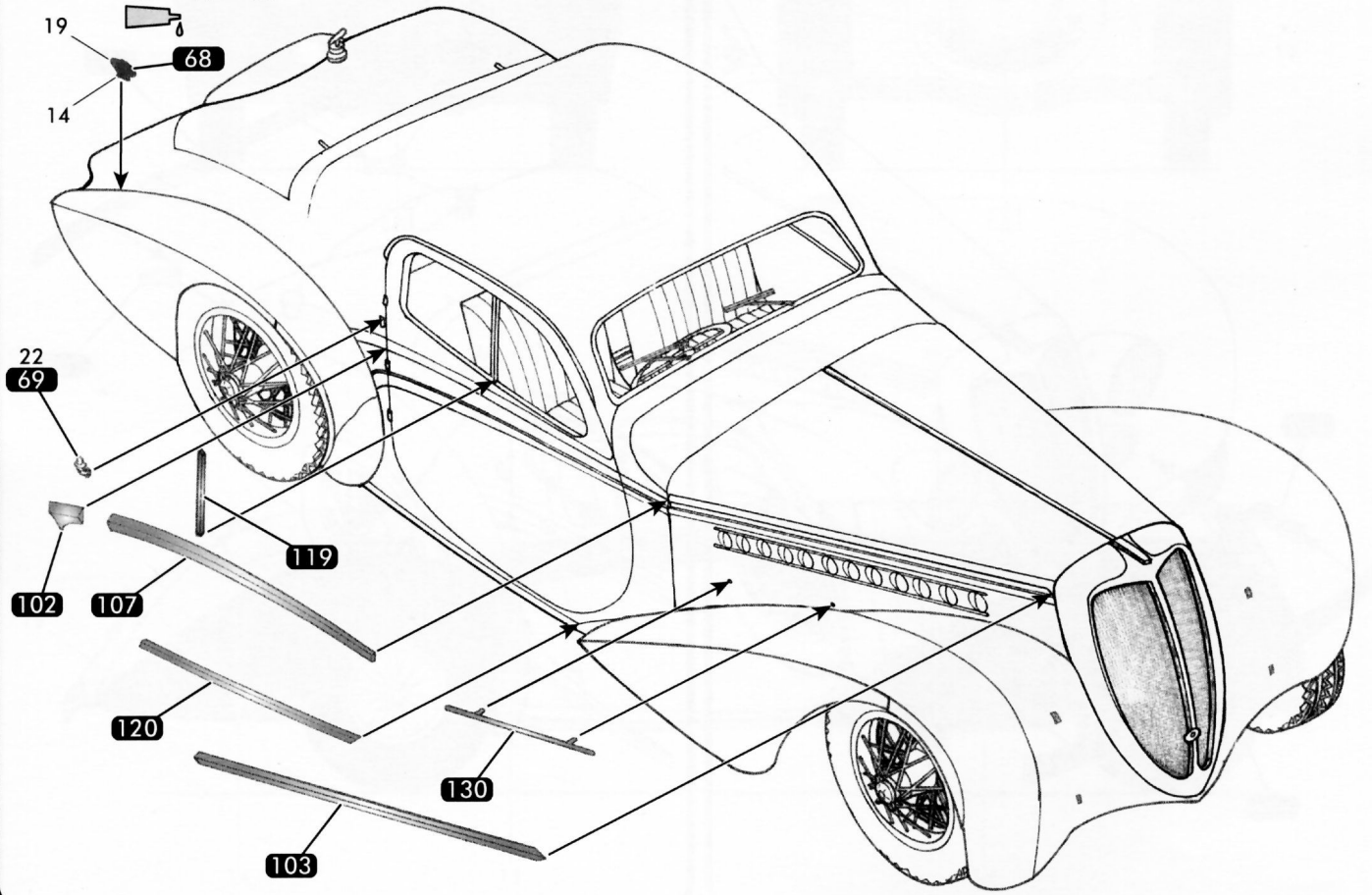
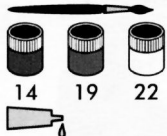
35




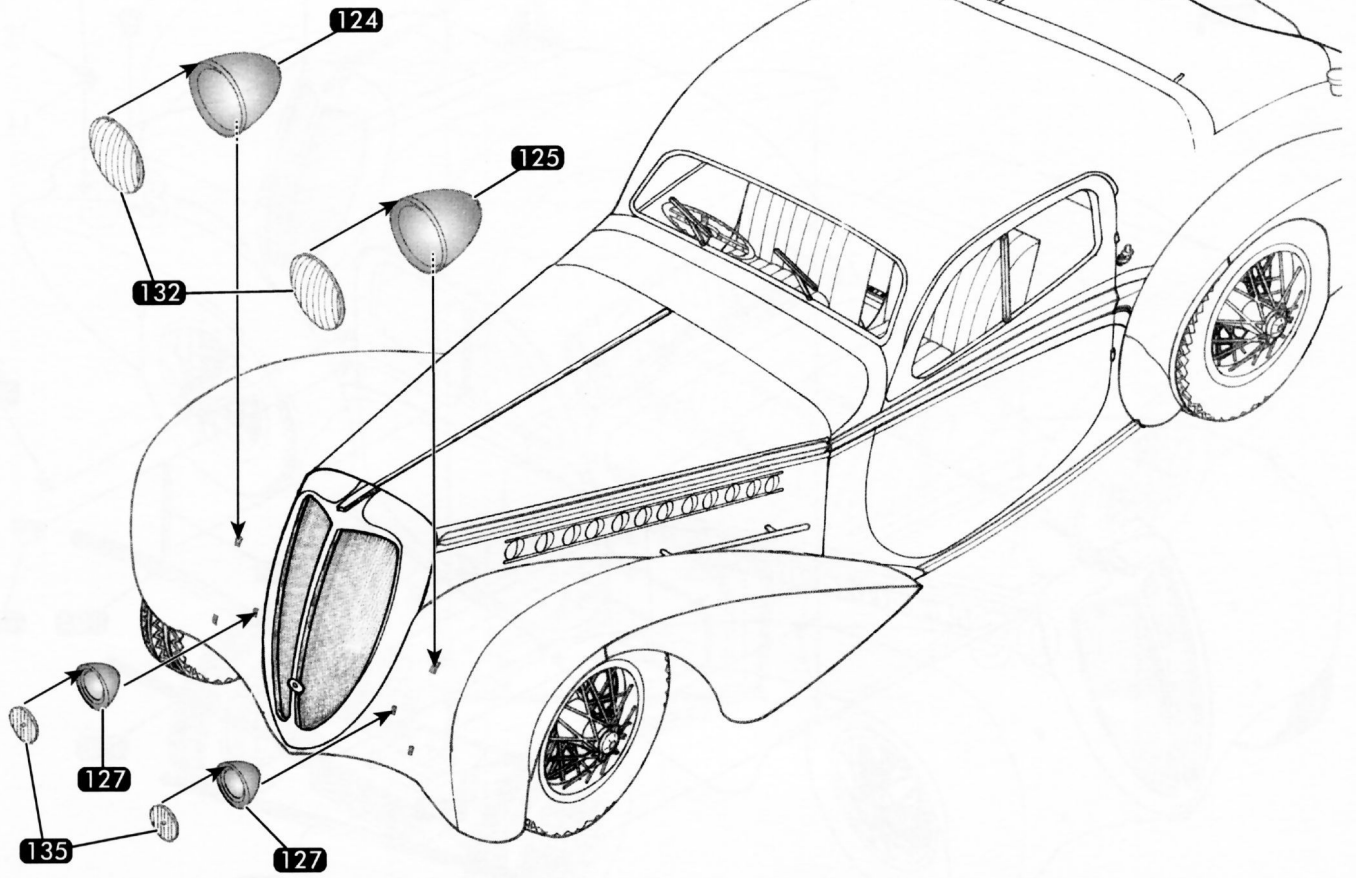
36




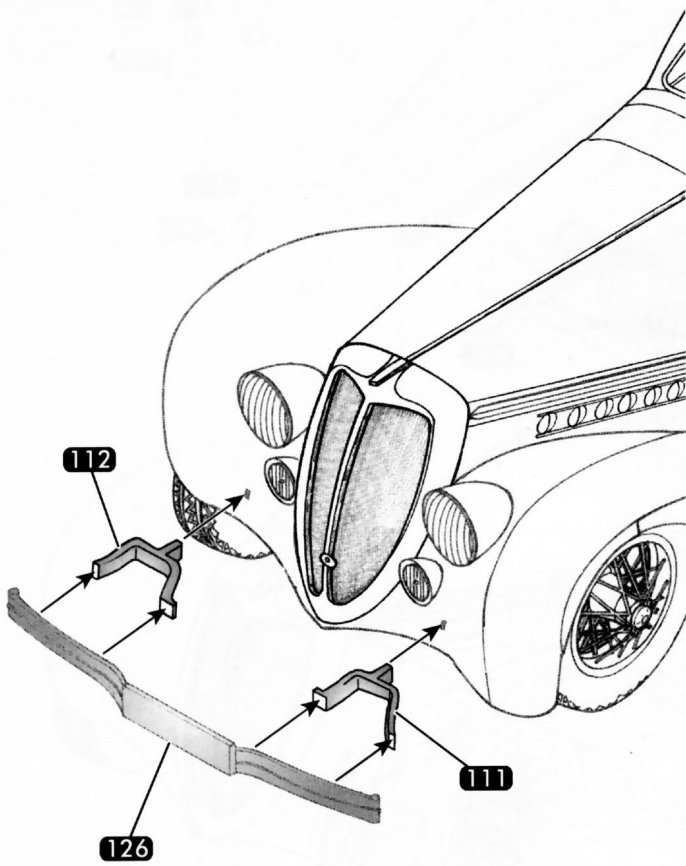
37




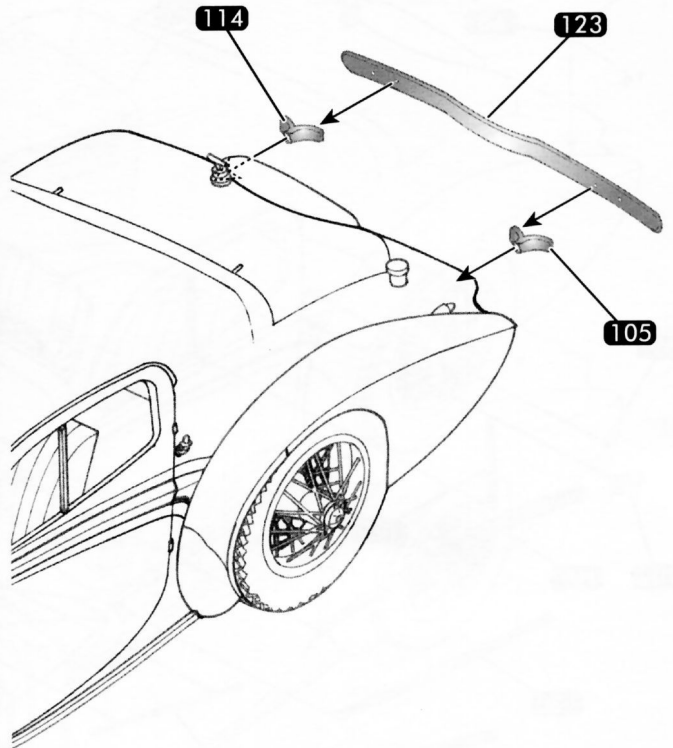
38 



39 

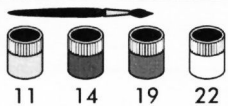


40 



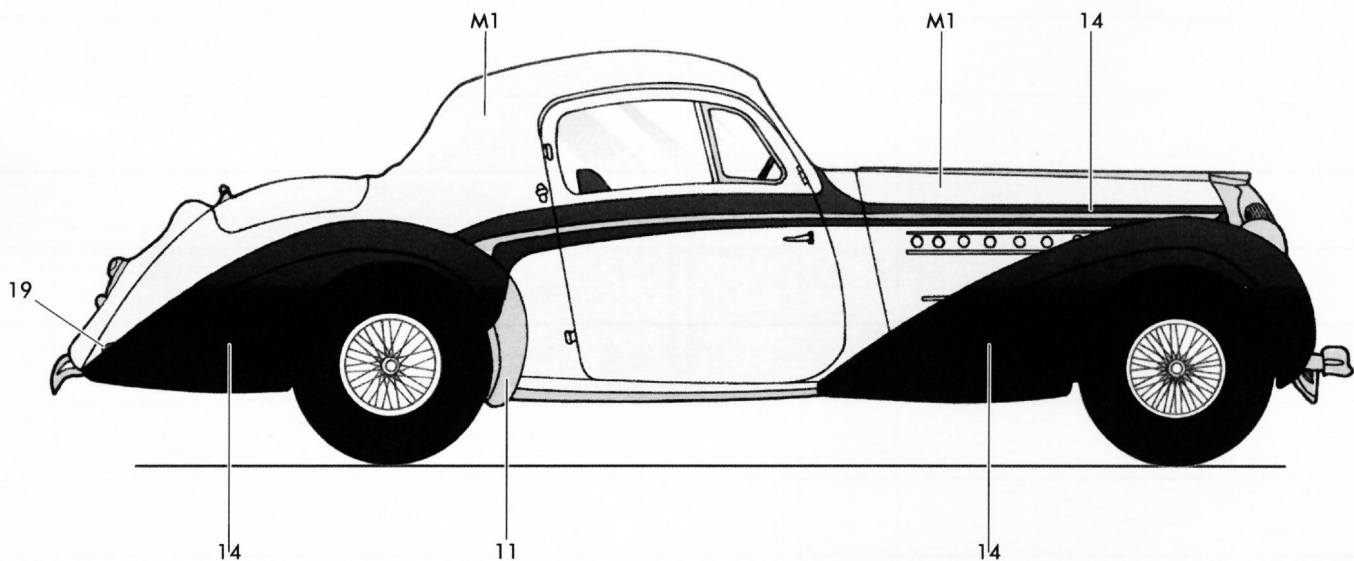
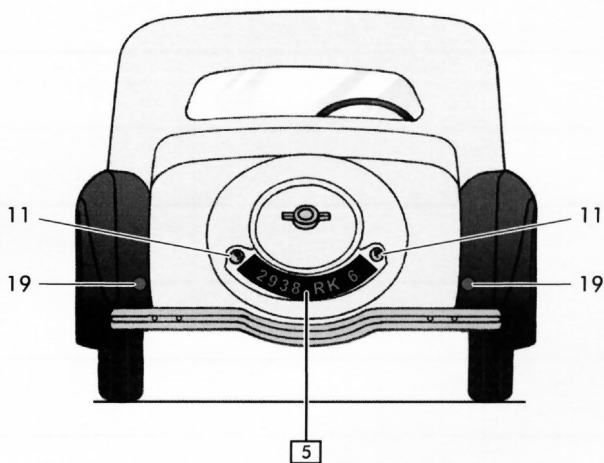
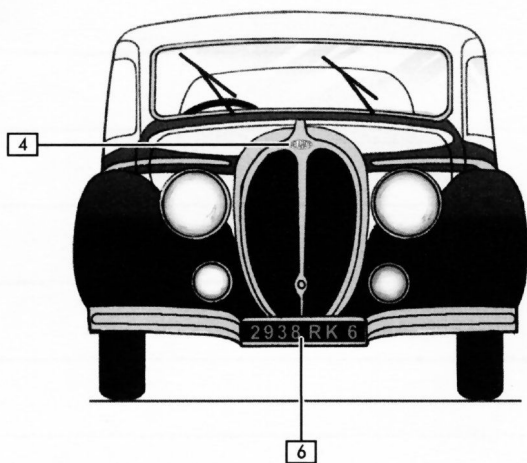
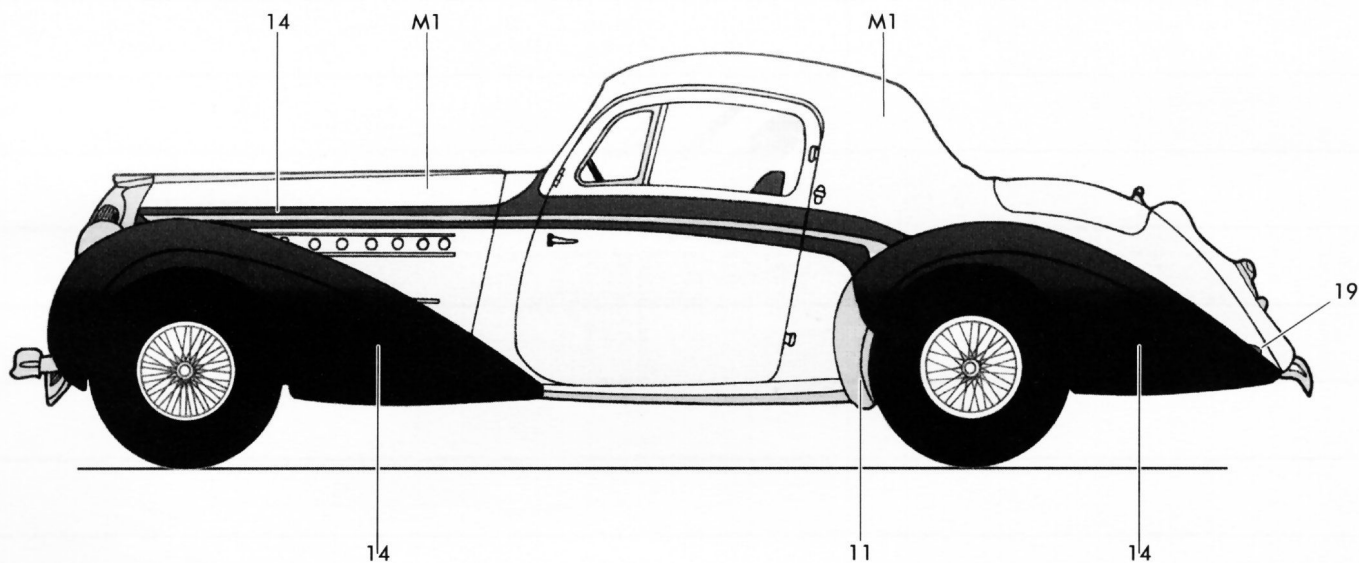


41



M1  
15% 14 + 85% 22

DELAHAYE 135, 1938



Imprimerie Heller - 80707

SERVICE CONSOMMATEURS 

***www.heller.fr***

Pour toute demande de SAV, connectez-vous sur notre site [www.heller.fr](http://www.heller.fr) puis envoyez votre demande détaillée via l'onglet «NOUS CONTACTER».

For any request of SAV(after-sales service), please connect on our website [www.heller.fr](http://www.heller.fr) then send us your detailed request via the « NOUS CONTACTER» tab.

**MAPED HELLER JOUSTRA SAS**  
**Chemin de la Porte**  
**61160 - TRUN**



**Fabriqué en France**