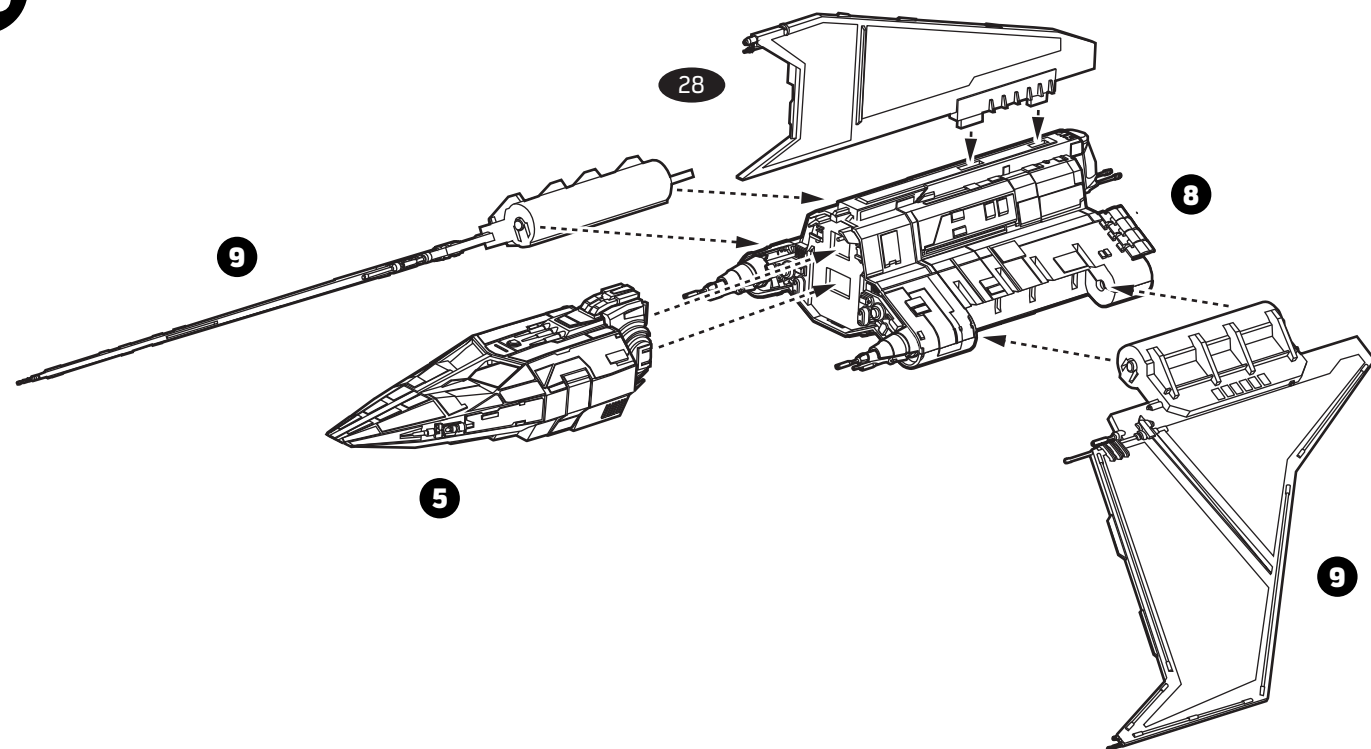


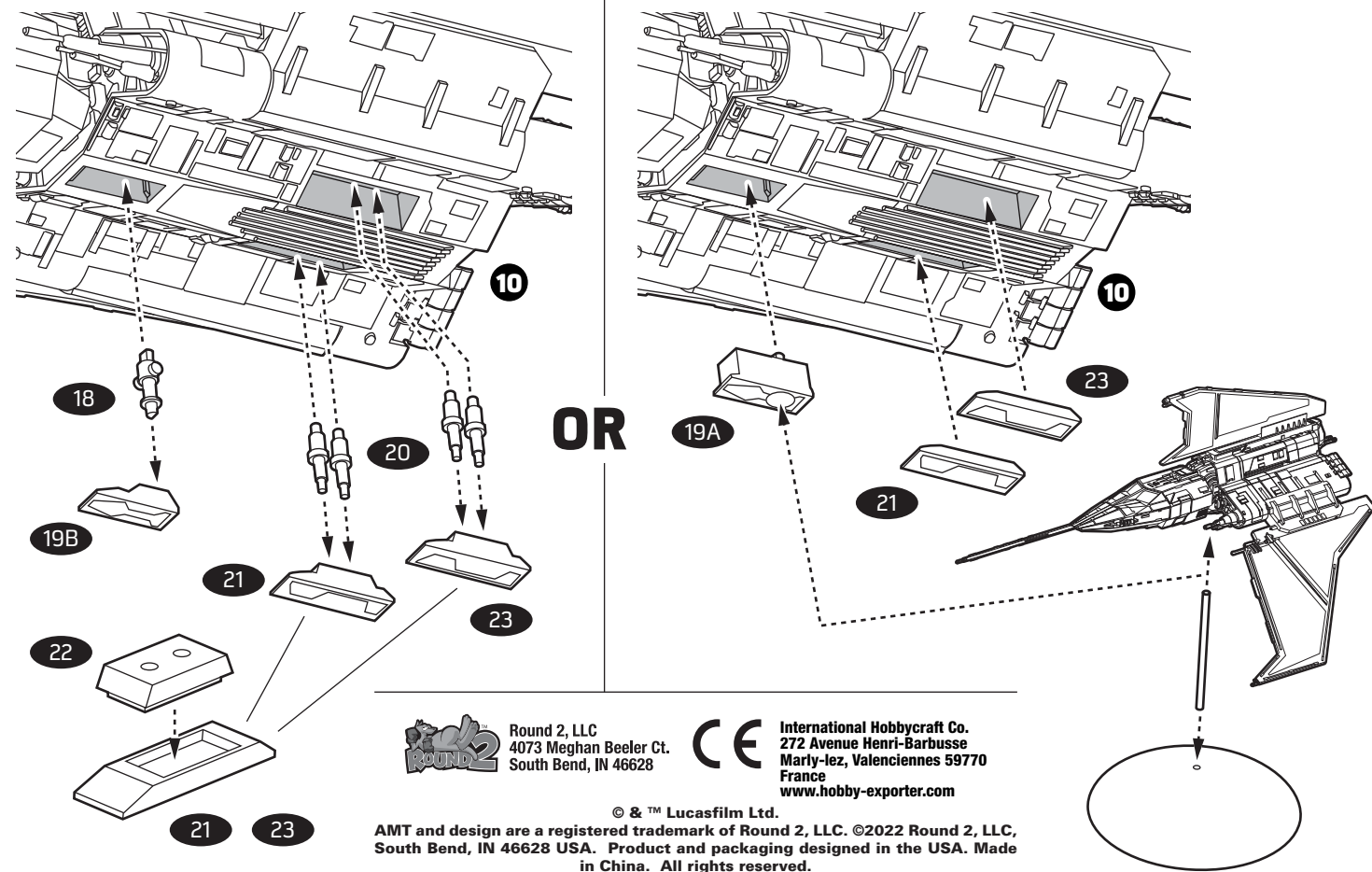
10



11

LANDED

IN-FLIGHT ON STAND



Round 2, LLC
4073 Meghan Beeler Ct.
South Bend, IN 46628

International Hobbycraft Co.
272 Avenue Henri-Barbusse
Marly-lez, Valenciennes 59770
France
www.hobby-exporter.com

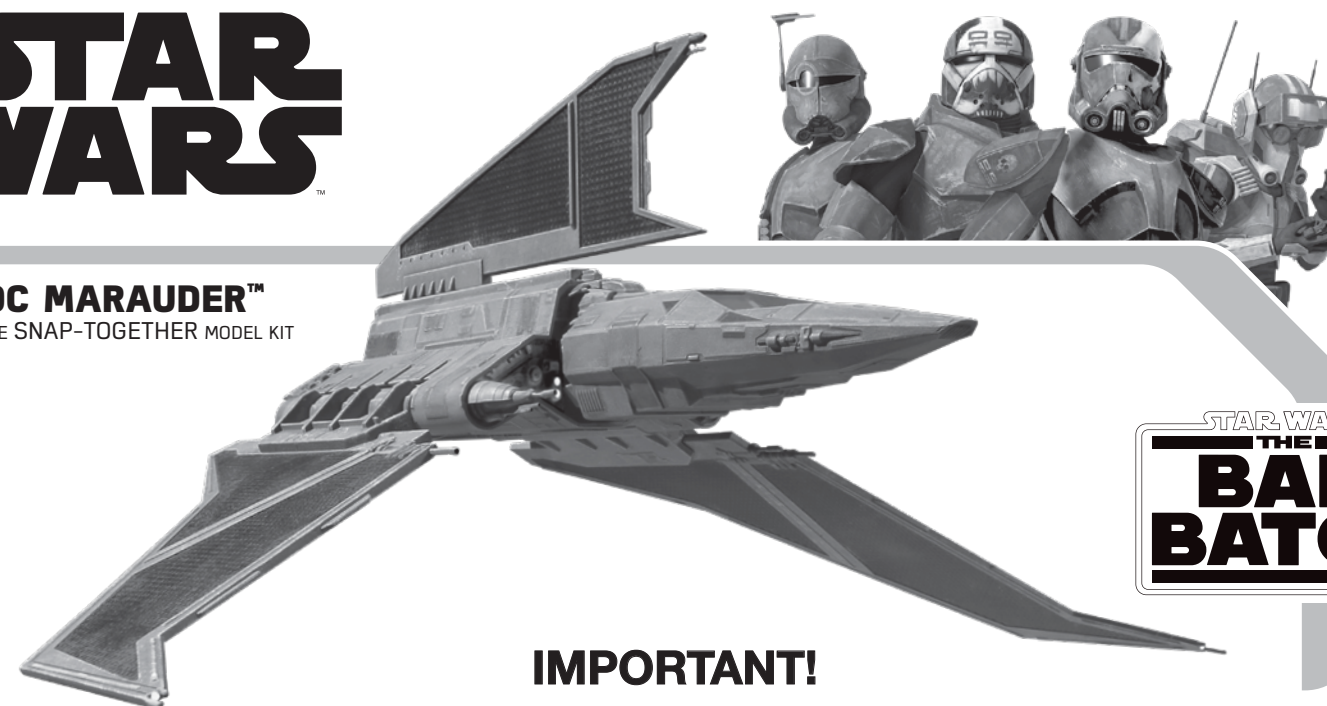
© & ™ Lucasfilm Ltd.
AMT and design are a registered trademark of Round 2, LLC. ©2022 Round 2, LLC,
South Bend, IN 46628 USA. Product and packaging designed in the USA. Made
in China. All rights reserved.

STAR WARS

amt
AMT1348/12

HAVOC MARAUDER™

1/144 SCALE SNAP-TOGETHER MODEL KIT



IMPORTANT!

READ THESE INSTRUCTIONS FIRST

GENERAL ASSEMBLY: This highly-detailed kit features precision-tooled parts for ease of assembly. Care and patience must be exercised to achieve optimal results.

GLUE ASSEMBLY: The use of glue is optional. It is recommended that the instructions be examined carefully before applying cement. You will find this very helpful, as it will allow you to gain a clear understanding of how the parts fit together in order to best plan painting and final assembly.

SUB-ASSEMBLIES: Note that this kit is intended to be built in sub-assemblies. This

makes building the kit far more manageable. It is very important to note that it can be extremely advantageous to apply paint and decals to sub-assemblies before completing final assembly.

DECALS & PAINT: This kit includes water slide decals. These decals are compatible with setting solution which can be applied to conform around surface details. See the diagrams on the box bottom for decal and paint placement. For best results apply clear coat for final finish.

Decal Application:

1. Cut the desired decal from the sheet. It will be helpful to include the part number with the decal as you cut it from the sheet. Then, cut off the number before the decal is applied.
2. Dry fit the trimmed decal to become familiar with its proper placement.
3. Dip the decal in water for 10 seconds. For best results, mix one drop of common dish washing detergent per cup of lukewarm water.
4. Place the wet decal on paper towel and wait 30-60 seconds until the decal is movable on paper backing.
5. Wet the area of the model the decals will be applied to. For larger areas, it is best to excessively wet the area to the point of dripping to aid positioning.

6. Hold the decal face up, in position on model and slide backing away from under it.
7. Once positioned correctly, absorb excess water with a paper towel. Starting in the center of the decal, blot out air bubbles toward the edges with a soft damp cloth.
8. Troublesome air bubbles can be rubbed to the edge of the decal with a clean, soft paintbrush or simply puncture the decal with a sharp #11 blade. Air bubbles must be removed before the decal dries.
10. Let decals dry completely before handling or applying more decals next to or on top of previous work. It is best not to use heat to accelerate drying times as this may crack the decals, affect their adhesive or melt plastic parts!

