

EAGLE STRIKE



48112

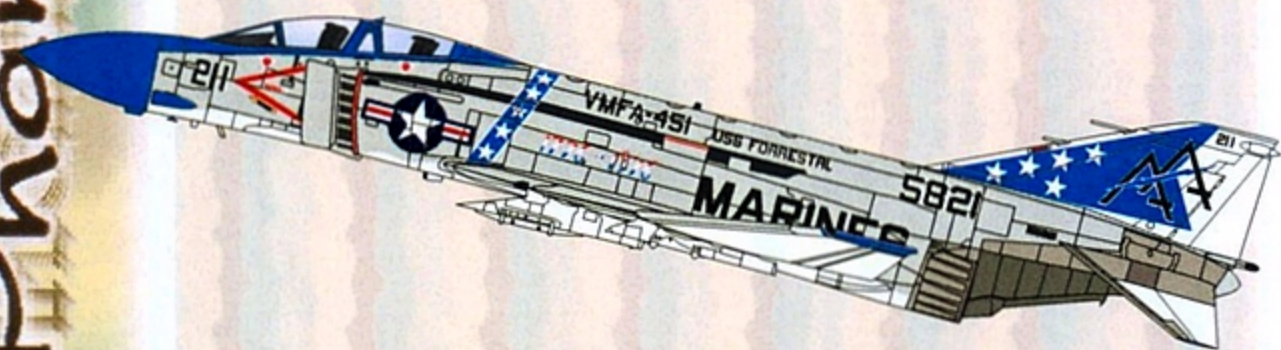
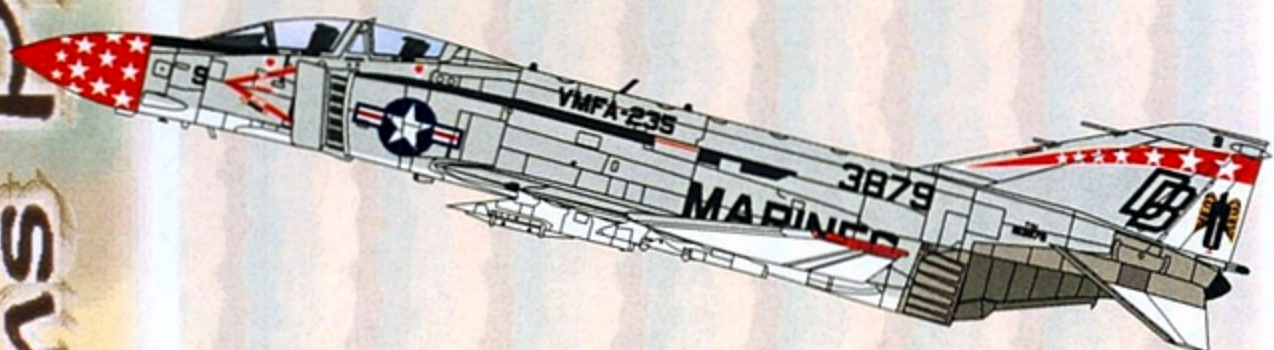
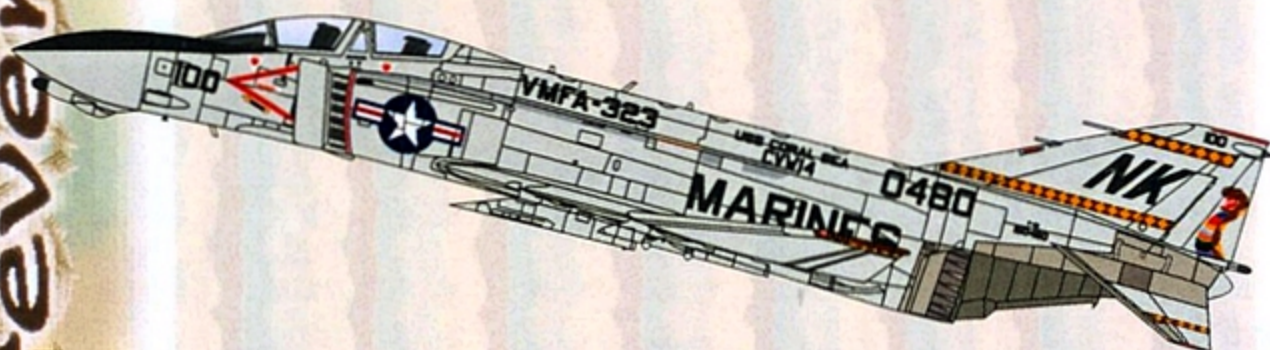


Phantoms Phorever



Part VII

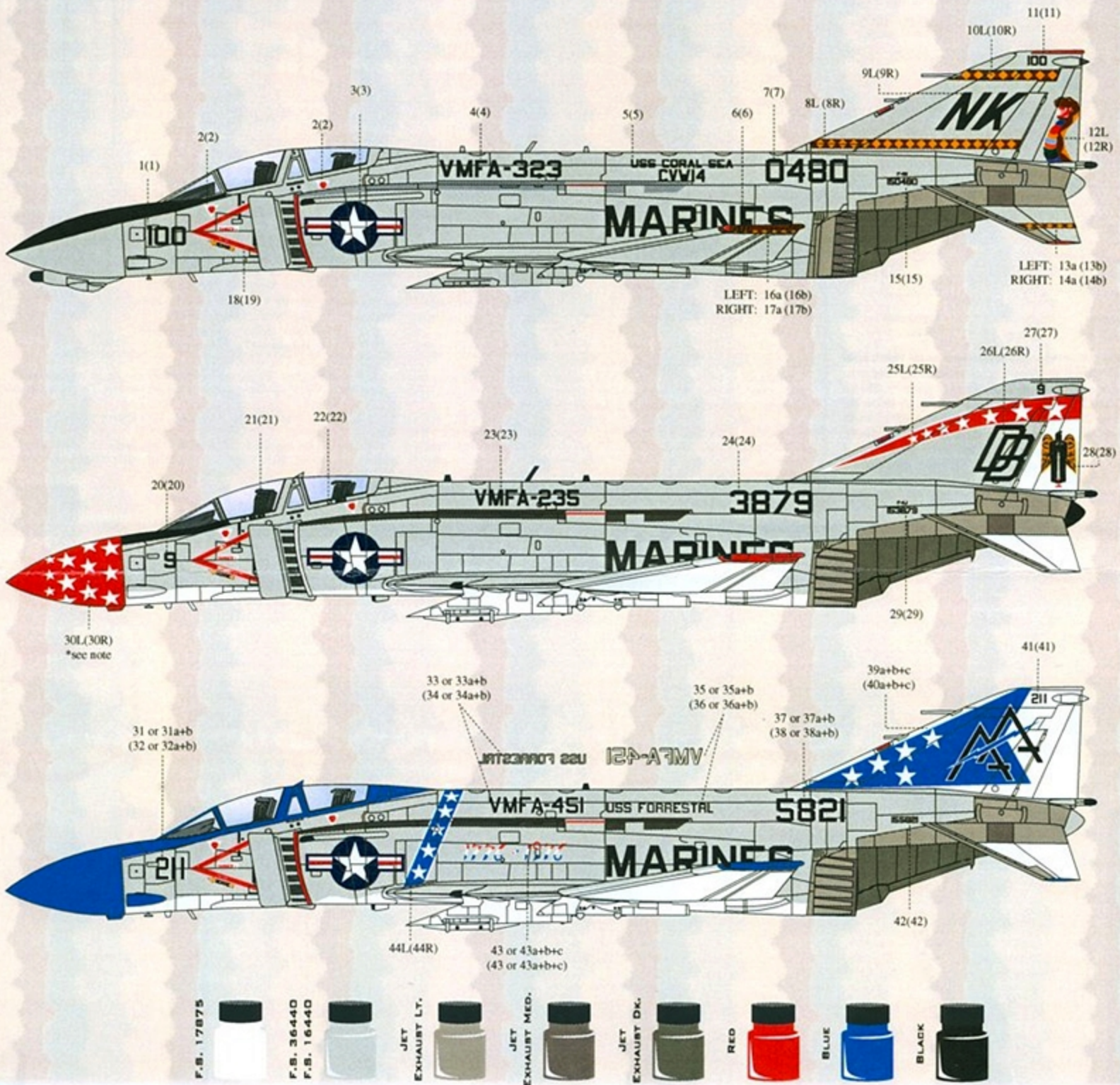
Phantoms Phorever



Suggested Kit: Hasegawa F-4B/N / F-4J Phantom

Phantoms Phorever

Part VII

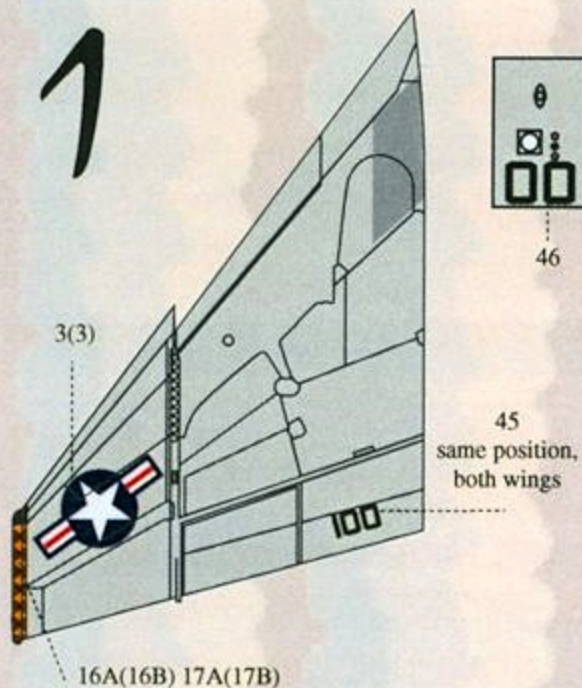


F-4N Phantom BuNo. 150480. Air Wing 14 CAG bird of VMFA-323 Death Rattlers aboard USS Coral Sea (CV43) in 1979/80. Overall Gloss Gull Gray FS16440 with Gloss White FS17875 landing gear and wheel well interiors. Flat Black FS37038 antiglare panel. Fuselage/wing walk areas painted Medium Gray. Tail formation light fairing on top of fin and leading edges of jet intakes painted Red. Note tail ECM fairing, antenna on inlet sides, and RIO's rear view mirror. Special Black/Red/Black identification stripes applied to right wing outboard section for Operation Eagle Claw, the attempted rescue of American hostages in Iran, April 1980. In service, the squadron markings faded badly; the yellow turning almost white.

F-4J Phantom BuNo. 153879. Assigned to VMFA-235 Death Angels, based at MCAS Kaneohe Bay, Hawaii, as part of MAG-24, in January of 1975. Painted Non-Specular Gull Gray FS36440 upper surfaces with Gloss White FS17875 undersurfaces, landing gear, and control surfaces with Flat Black FS37038 antiglare panel, fuselage and wing walk areas. Gloss Insignia Red FS11136 nose radome and wing tips. Note antennas, rear view mirror over rear canopy, tail ECM fairing. DB9 carried no national insignia under the right wing! Some trimming of the decal film between the vertical columns of stars on Decals #17L and 17R may be required for a better fit. If you do not agree with our star layout, they are also provided to you as loose items. Good luck. Photo page 35, ref. 6 and page 49 ref. 7.

F-4J Phantom BuNo. 155821. Bicentennial bird own by VMFA-451 assigned to USS Forrestal's Carrier Air Wing 17 in 1976. The Warlords trained for, but did not deploy on, the cruise. Non-Specular Gull Gray FS36440 upper surfaces with Gloss White FS17875 undersurfaces, landing gear, and control surfaces. Inlet leading edges were Gloss Red and fuselage/wing walk areas were Flat Black. Paint vertical tail Gloss White before applying decals and paint nose radome, antiglare panel, air conditioning inlets, canopy, wing tips, and tips of horizontal tails Gloss Medium Blue to match decals. Note tail ECM antenna fairings on tail and inlet trunks, RIO's rear view mirror.

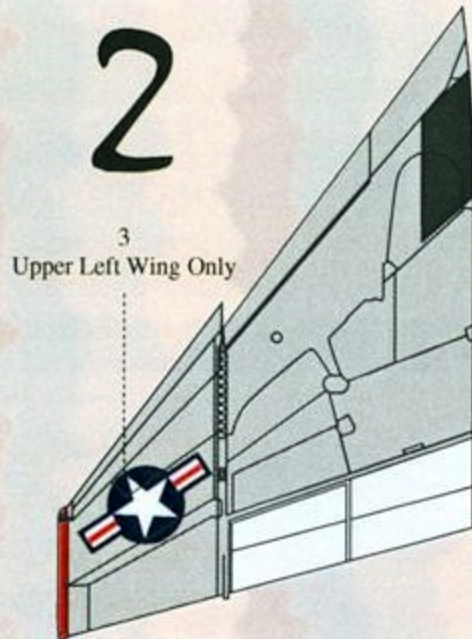
For Decals #30L and #30R, apply the end star along the top seam line with the top point towards the nose. Overlap the stars for proper alignment.



46

45
same position,
both wings

16A(16B) 17A(17B)



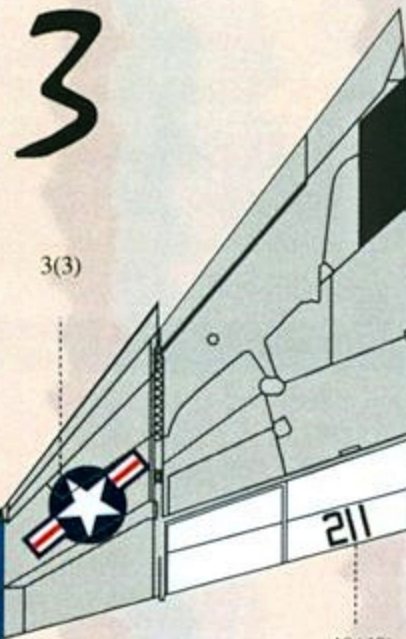
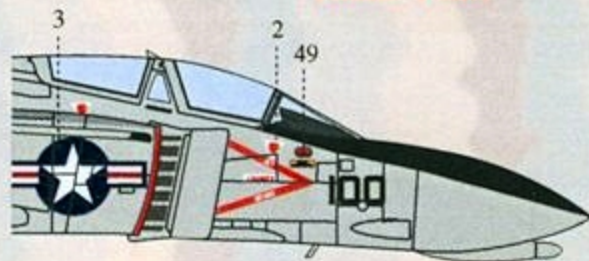
3
Upper Left Wing Only



47

A special thanks to
Dr. Joe Handelman
for the detailed photos of DB9!

Thank You!!



3(3)

48(48)



41

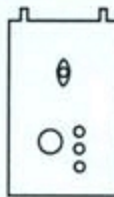
References:

1. US Navy and USMC CAG Aircraft, Camouflage & Markings #10, 1988
2. McDonnell F-4 Phantom: Spirit in the Skies, Aerospace/Airtime, 1992
3. McDonnell Douglas F-4 Phantom Part 1, Aero Detail #4, 1991
4. Koku-Fan Famous Airplanes of the World No.114, October 1979
5. F-4 Phantom II in Action, In Action #65, 1984
6. F-4 Phantom Part 1, Aero Detail #4, 1991
7. Phantom II . A Pictorial History. S/S Pub by Lou Drendel.

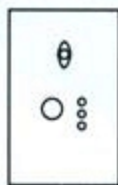
Suggested Kits:

- Hasegawa F-4B/N Phantom
- Hasegawa F-4J Phantom

Black/Red/Black stripes applied to right wing only (top & bottom) for Operation Eagle Claw, April, 1980. **Note:** parts of national insignia visible under stripes.



Hasegawa
F-4B/N/J Kits



McDonnell
F-4B/N/J

Note: The forward nose gear door covers in the 1:48th scale Hasegawa F-4B/N and F-4J kits are incorrect and need to be modified or replaced for these decals to fit properly. The kit landing and CLS lights are too large and too far below the center of the door. The landing light should be .07" (1.8mm) in diameter; the CLS lights diameters should be .02" (.5mm), and the top of the light array should be on the horizontal centerline of the nose gear door. The above drawings are done to 1:48 scale.

Decaling: Apply decals only to a glossy surface.

1. With a sharp scissors or knife, carefully cut item to be used, being careful of not cutting off the clear film around it or that belonging to an adjacent item.
2. Submerge in clean tap water for over 10 seconds and lay over an absorbent paper towel. Decal will slide freely in about 20 seconds. Do not leave decal on water bowl over ten seconds, or adhesive quality will suffer.
3. With a clean brush, apply a setting solution to the area where the decal will finally lay. (Micro, Super or Aero Set will do). With a clean pointed brush slide the decal on to the final area. Allow the setting solution to dry for about 3-5 minutes.
4. With another clean brush, apply a solvent solution over the decal (Micro, Super or Aero Sol will do). Do this if possible in one stroke since your decal will soften up and wrinkle immediately. This is an important step in the process, whatever you do **DO NOT TOUCH THE DECAL**, after this process until it is totally dry, preferably overnight.
5. When thoroughly dry, rinse your model with tap water and mild soap to wash of excess glue.
6. Finish your model with the desired final coat (gloss, flat, or semi-gloss).



12982 SW 132nd Ave. Miami, FL. 33186
U.S.A.
Ph: (786) 293-6859, Fax: (786) 293-9286.

EAGLE STRIKE
Productions