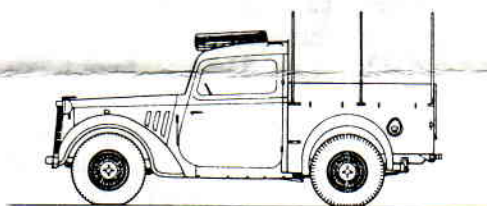
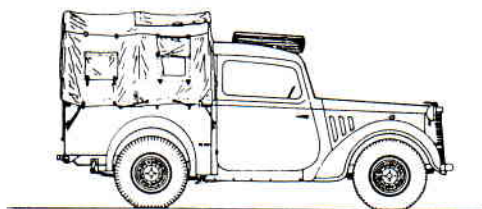
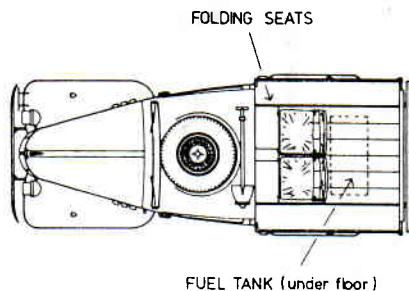


LEAD SLED MODELS

1/76th Scale White Metal Kit



AUSTIN 10hp 4x2 LIGHT UTILITY

SCALE 1:76
 feet
metres

© DAVID E. JANE 1978

Our thanks are due to David E. Jane for allowing us to use his drawings for illustrating this model and John Church for his help with information on this vehicle.

The Austin G/YG 4x2 Light Utility was based on the 1939 Austin 10 car chassis, the cab being open backed into the pickup type body. Rear seats tipped forward to increase load space. A canvas tilt was supplied for the body. These vehicles saw widespread service with all the Commonwealth forces including U.S. Forces in Europe throughout WW11 and after.

Post WW11 many went into civilian service and were seen in general use well into the 1960's. A number are preserved in running condition today. They were one of the main General communications Vehicles in all the services and were to be found at virtually all service installations. Production finished at the end of 1944. The engine was an Austin 4cyl. petrol of 1.23 ltrs. with 4 fwd. and 1 reverse gear. Laden weight was 1 ton 7 cwt. Fuel capacity was 8½ imperial gallons.

COLOUR SCHEMES

Colour schemes varied considerably, vehicles being seen in Dark Earth overall, RAF Blue/Grey overall, Dark Green overall. Also Dark Earth with Black or Green Mickey Mouse Ear camouflage and Dark Green with Black Mickey Mouse Ear camouflage. Vehicles in the Middle East were usually painted Sand or Middle Stone overall. There were numerous variations. Canvas tilts were lighter in colour compared to the paintwork. Serial numbers were usually White but some were seen in Black and were normally applied to the doors and tailgate. Arms of service badges were applied in the usual positions. The bridging disc is yellow with number 2 in black. Seats and door trims on early vehicles were in Green or Brown Rexine type material, later vehicles had Khaki or Green canvas covered seats.. One wartime vehicle in Dark Earth and Black had the serial M4672972 in White. Tyres Black.

CONTINUED OVERLEAF

