



TETRA Model Works

www.tetramodel.com



x2



반대쪽도 포함합니다.
repeat on the opposite side
対面側も同じ方法でつくり直します
对面侧一样的方法也重新做

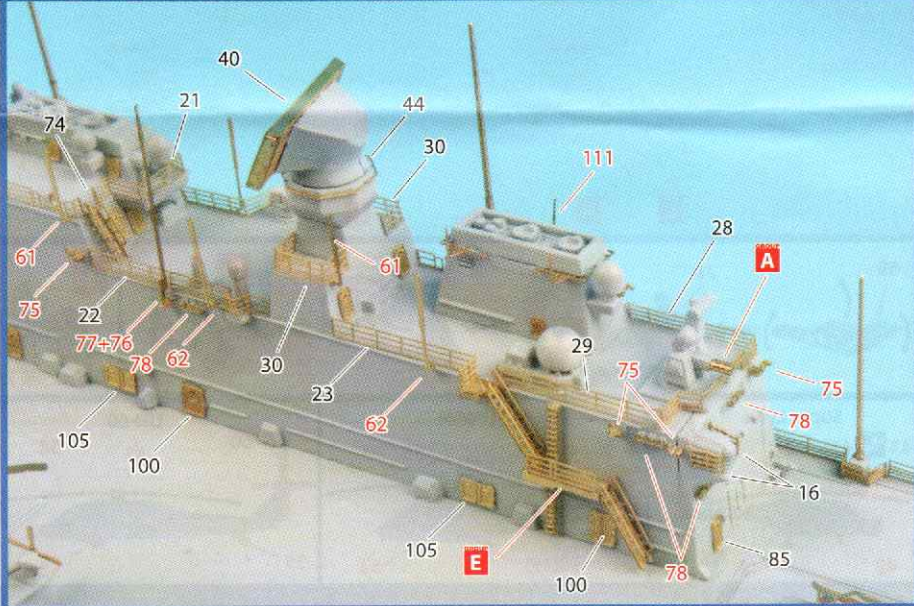
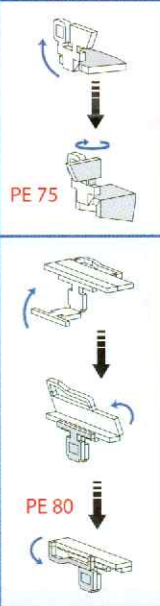
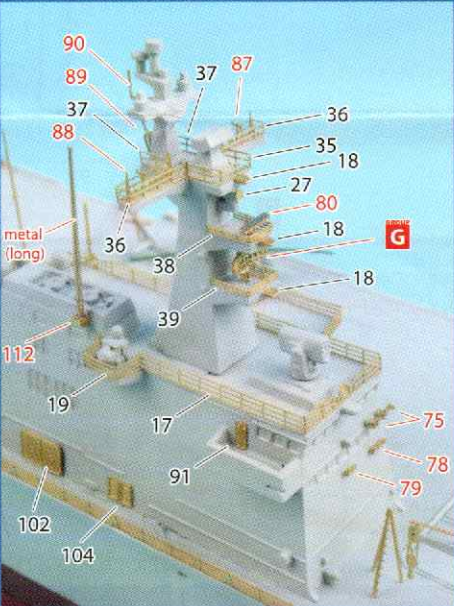
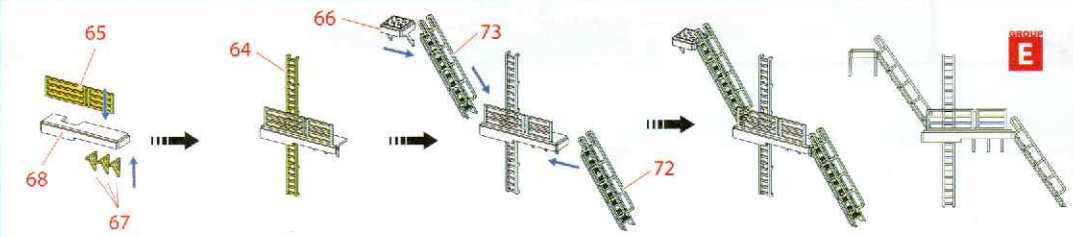
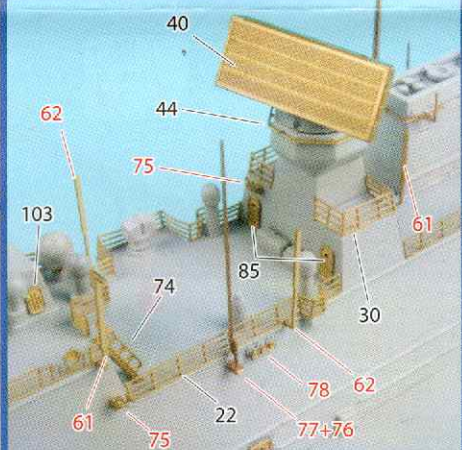
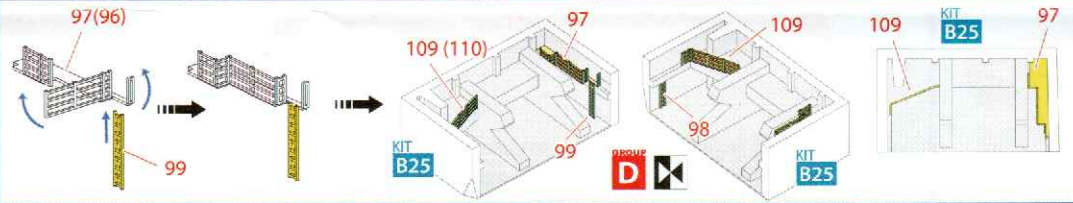
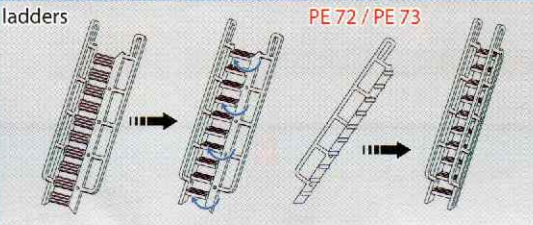
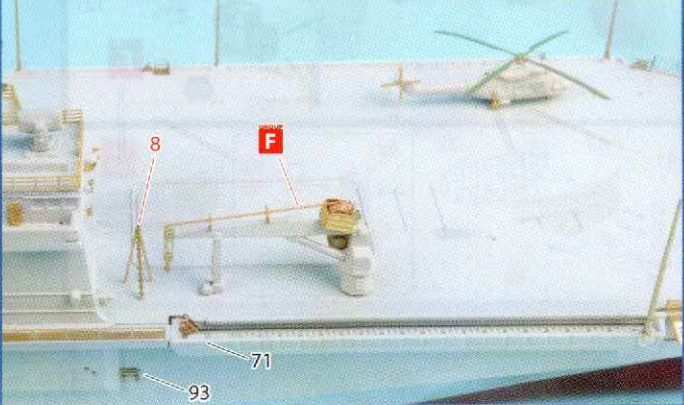
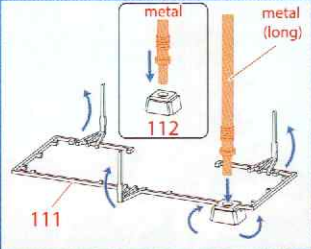
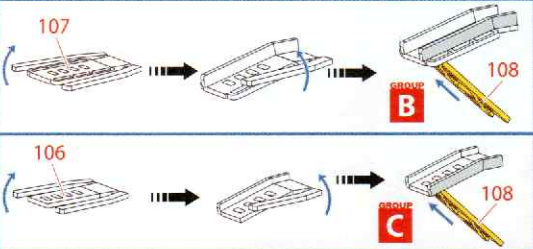
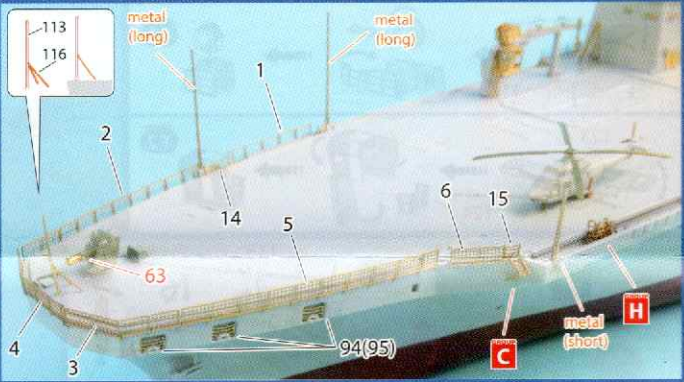
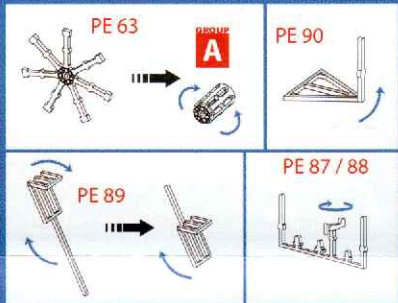
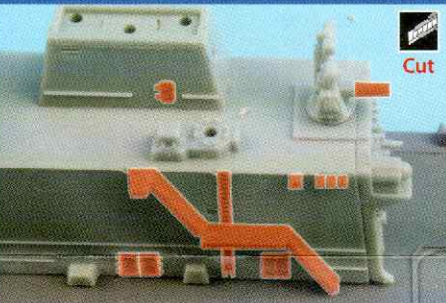
2번 포함합니다.
Make 2 sets.
2번つくってください
同様制作二組

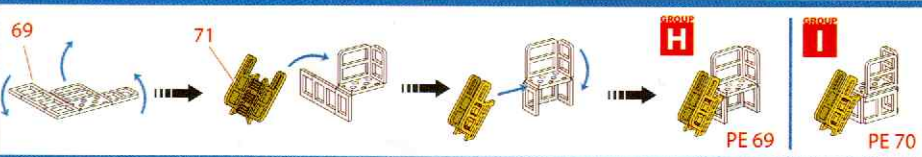
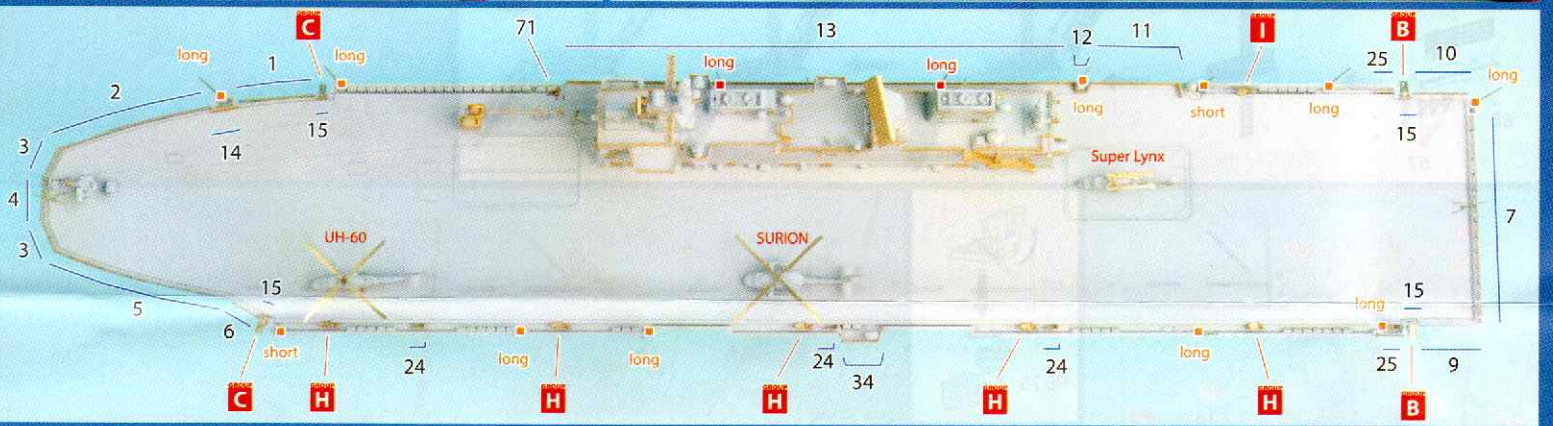
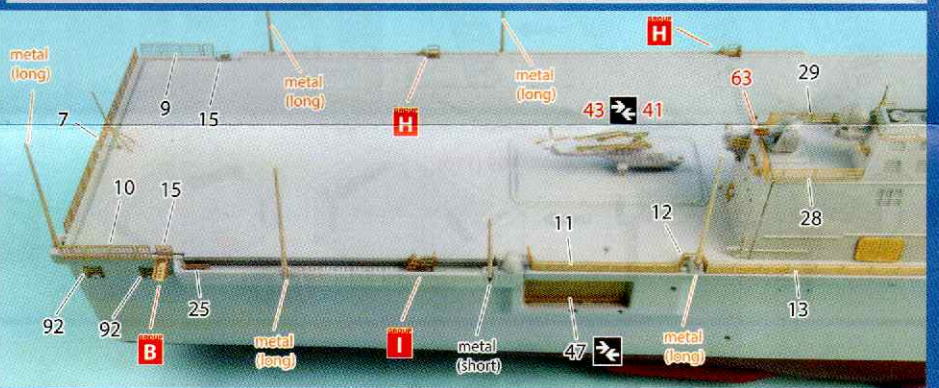
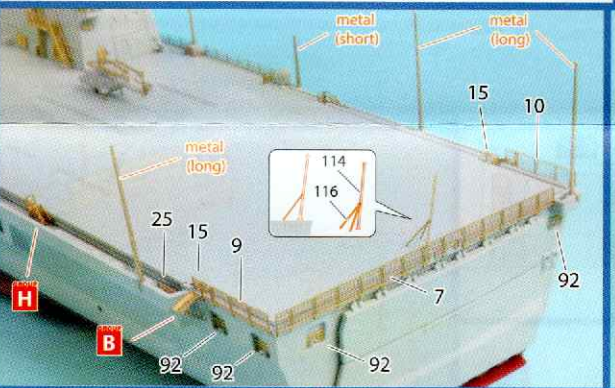
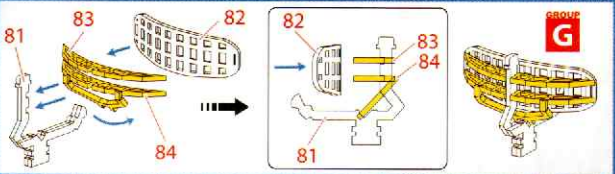
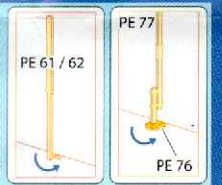
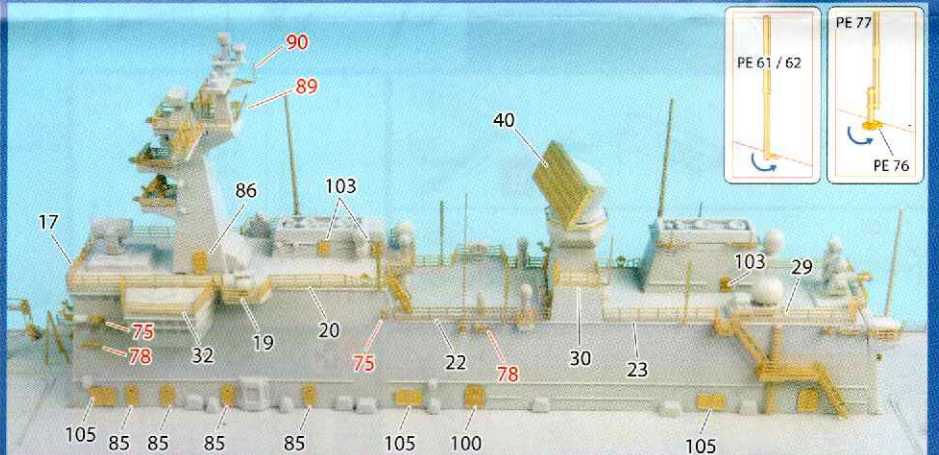
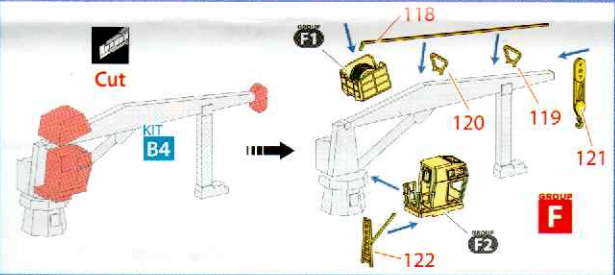
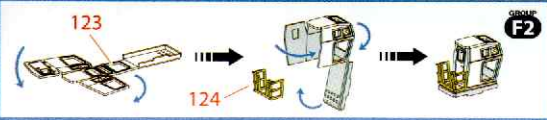
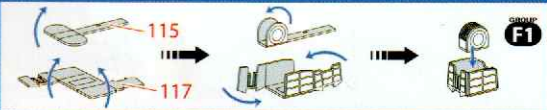
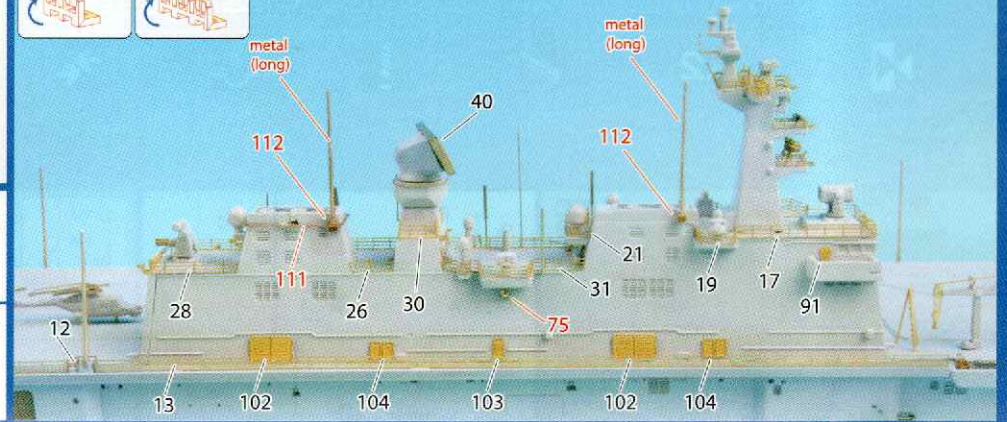
잘라냅니다.
Remove / Cut
切り取っています
取舍

구멍을 만듭니다.
Make hole.
구멍あけてください
鑿孔

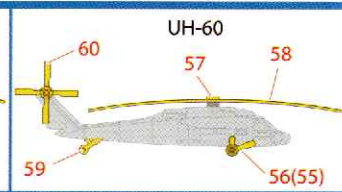
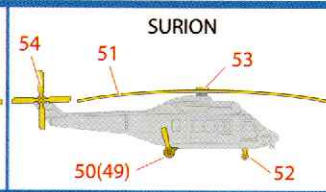
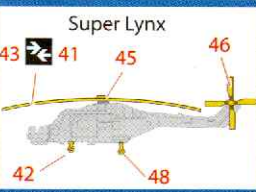
누릅니다.
Press
押してください
擠按

선택 부분입니다.
Optional parts
どちらかを選んでください
可以选择使用





SE-70017 1/700 ROK NAVY LPH-6111 Dokdo Detail-up Set



www.tetramodel.com

1/700 DOKDO (LPH-6111) Detail-up Set

2 MADE IN KOREA

CONTACT US - info@tetramodel.com

