

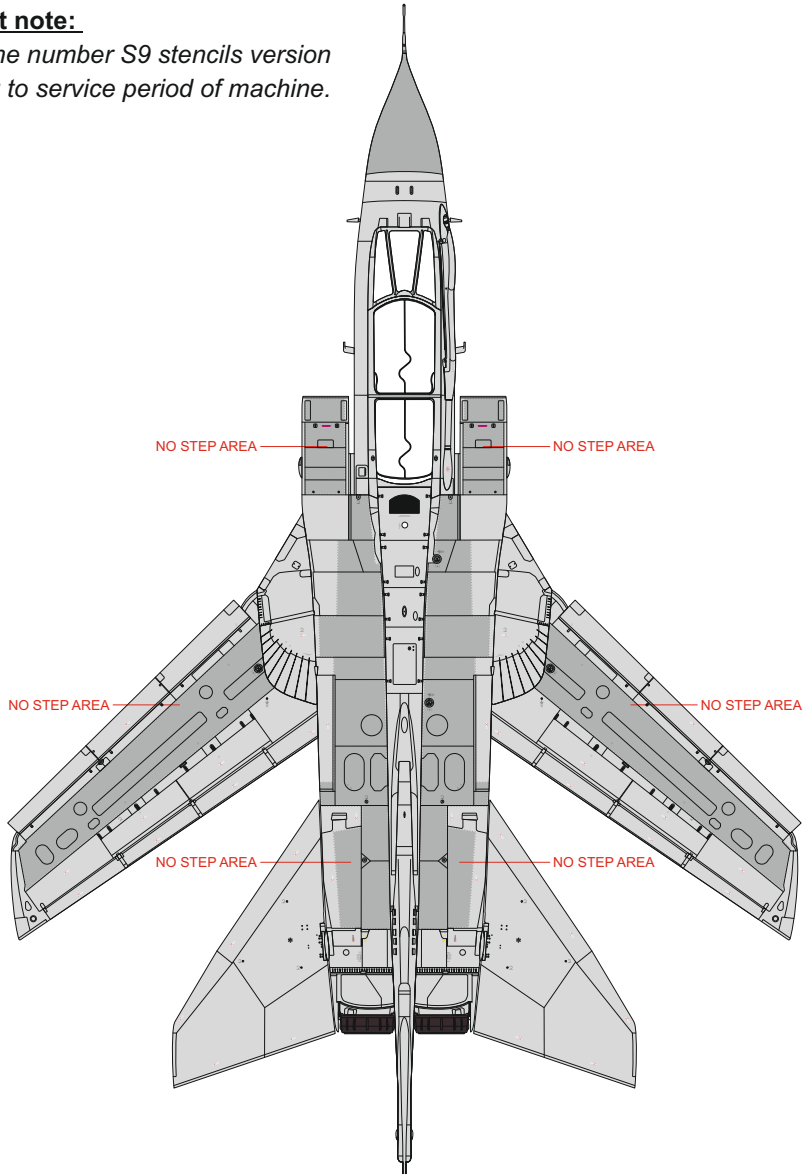
SCALE
1/32

Tornado GR.4 stencils

ITEM #
D32009

Important note:

Choose the number S9 stencils version according to service period of machine.



DESIGNED EXCLUSIVELY FOR TORNADO GR.4 BY REVELL/ITALERI

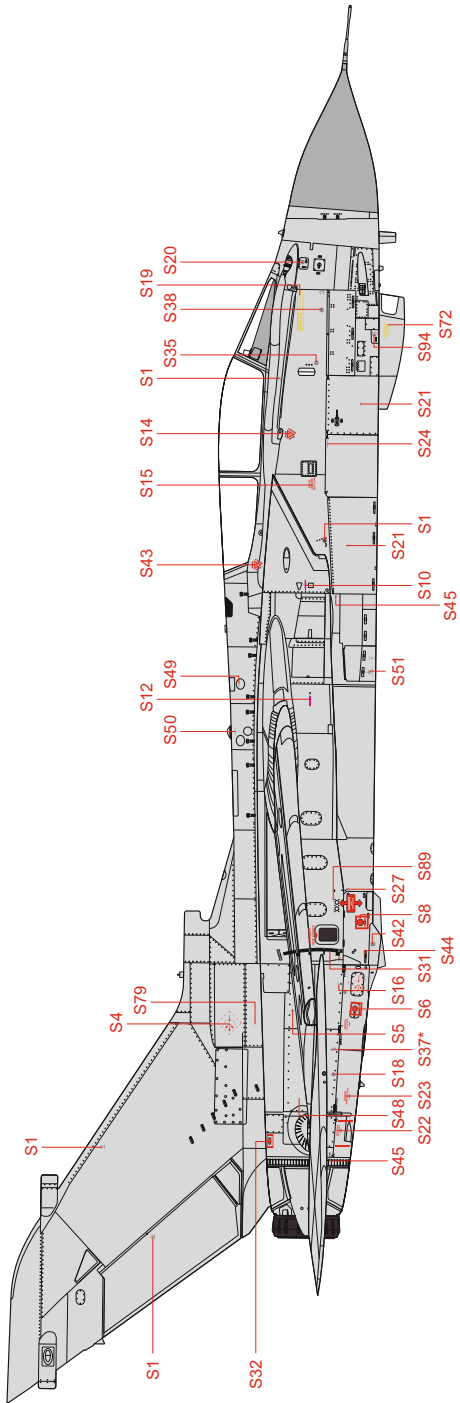


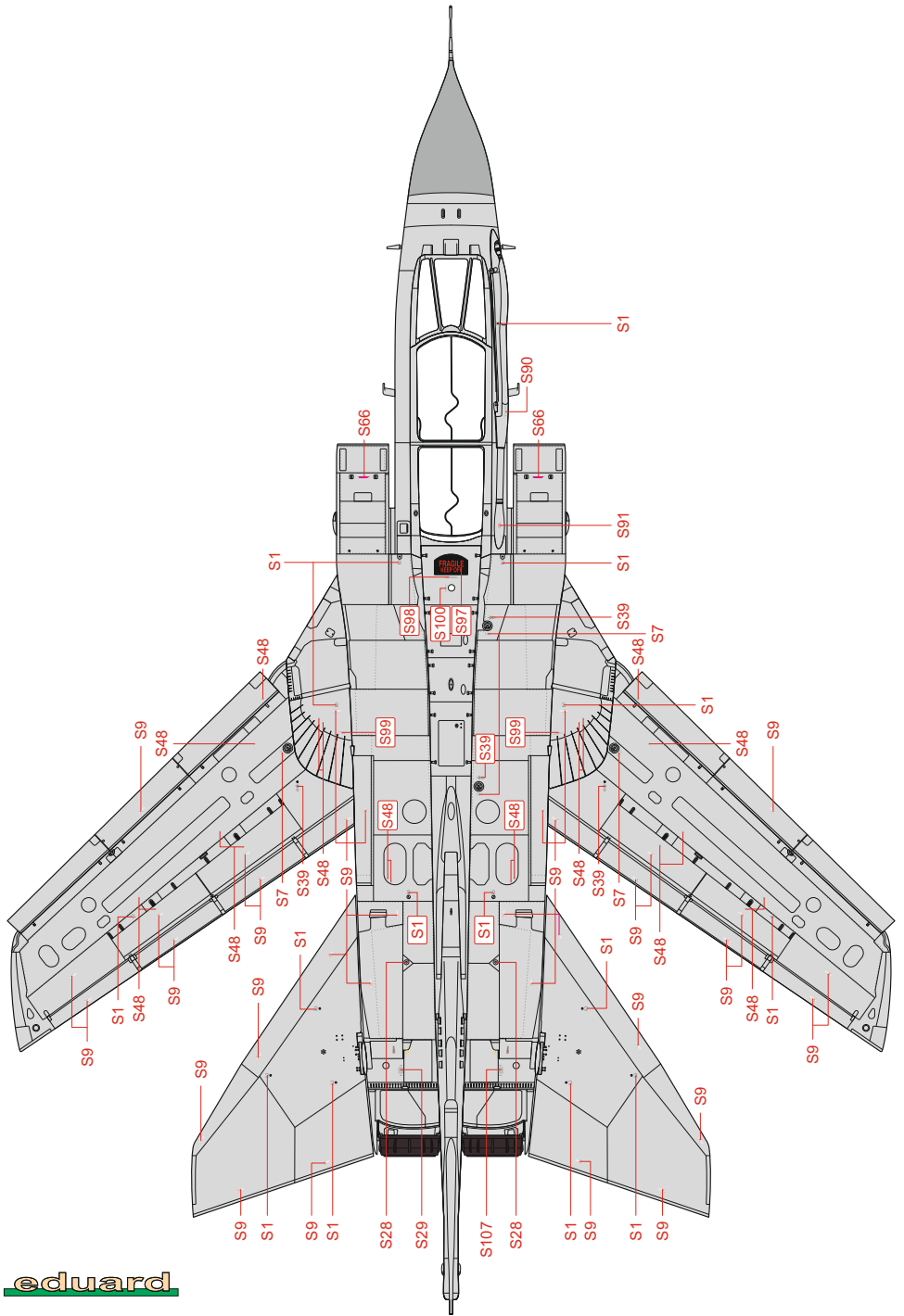
Eduard - Model Accessories, 435 21 Obrnice 170,
Czech Republic

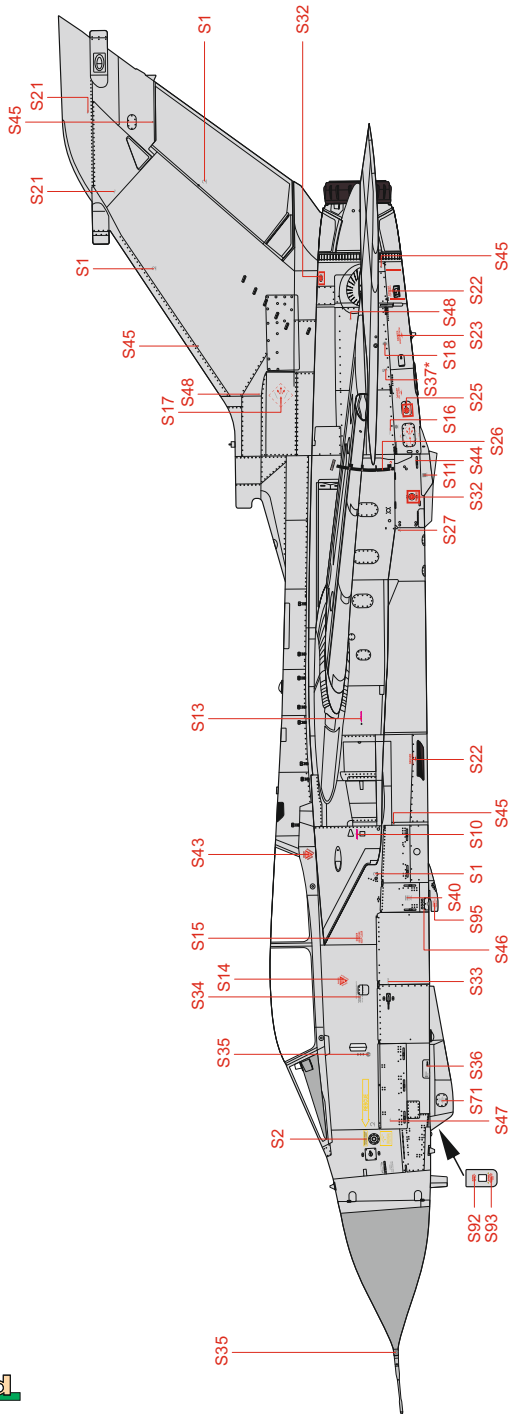
WWW.EDUARD.COM

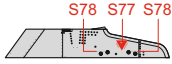
D32009 Tornado GR.4 stencils 1/32



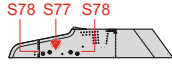




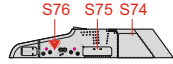




left outer wing pylon (inside)



right outer wing pylon (inside)



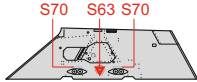
left outer wing pylon (outside)



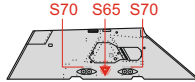
right outer wing pylon (outside)



left inner wing pylon (outside)



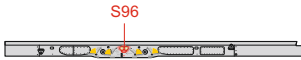
right inner wing pylon (inside)



left inner wing pylon (inside)



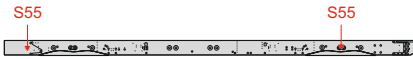
right inner wing pylon (outside)



central fuselage pylon (left side)



central fuselage pylon (right side)



right fuselage pylon (inside)



right fuselage pylon (outside)

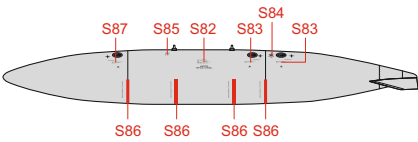


left fuselage pylon (outside)



left fuselage pylon (inside)

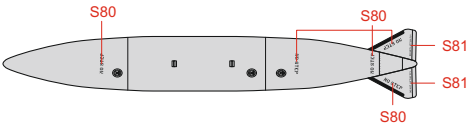
220gal/1.000 l auxiliary fuel tank (left)



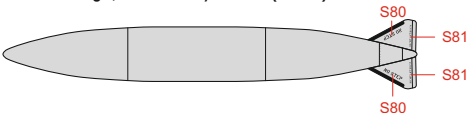
220gal/1.000 l auxiliary fuel tank (right)



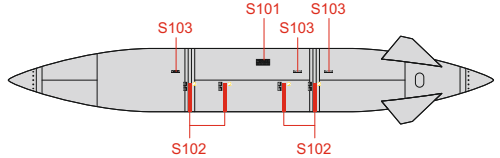
220gal/1.000 l auxiliary fuel tank (top)



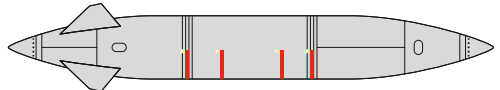
220gal/1.000 l auxiliary fuel tank (bottom)



495gal/2.250 l auxiliary fuel tank (left)



495gal/2.250 l auxiliary fuel tank (right)



495gal/2.250 l auxiliary fuel tank (top)



495gal/2.250 l auxiliary fuel tank (bottom)

