

1/48 SCALE

## **AIR SPRAY INVADERS**

Decal Set #26.1.48

Complete markings for 2 A-26B and  
1 A-26C fire bombers.

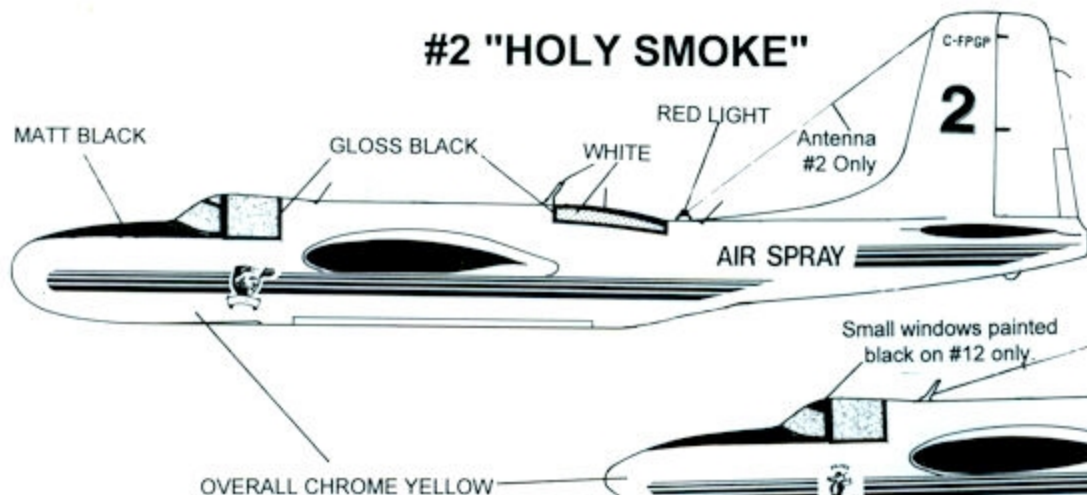


# AIR SPRAY A-26 INVADERS

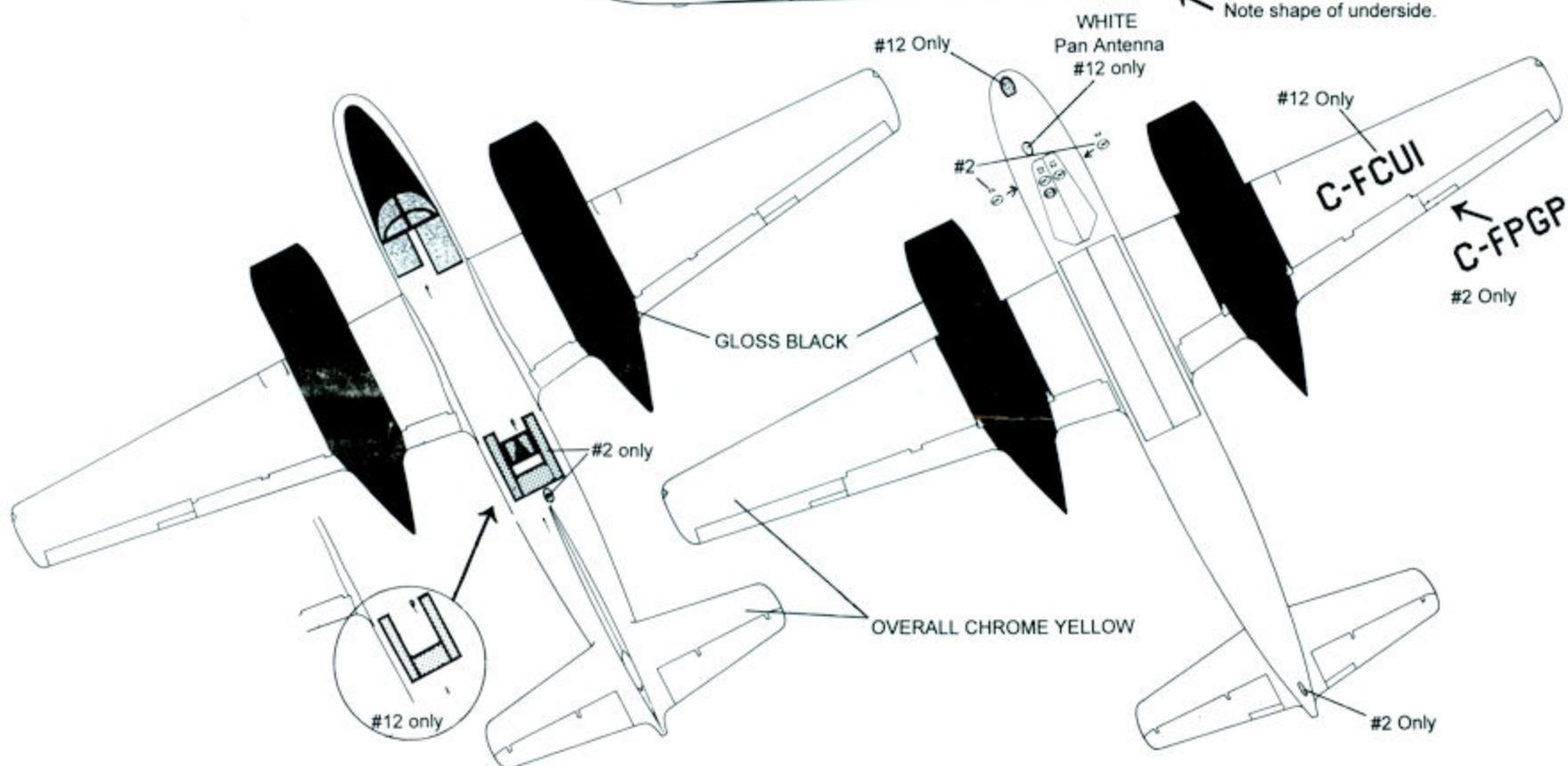
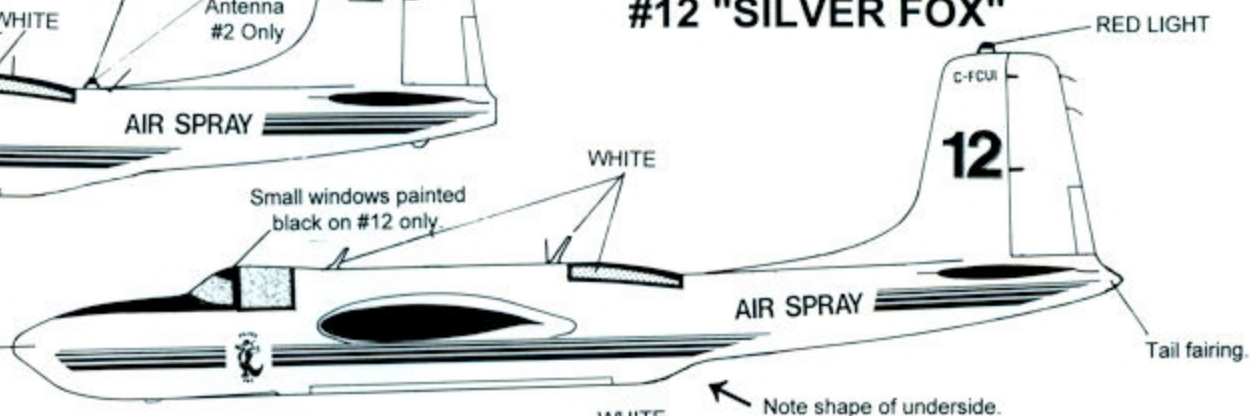
Decal sheet #26.1.72 / #26.1.48

Airspray currently (1995) operates 18 A26 Invaders. The modified sealed bomb bays hold 760 imperial gallons of retardent which can be dropped 1/2 or all at once. Operating gross weight is 35,000 lbs. Cruise speed is 240 mph and retardent dropping speed is 120-160 mph.

## #2 "HOLY SMOKE"

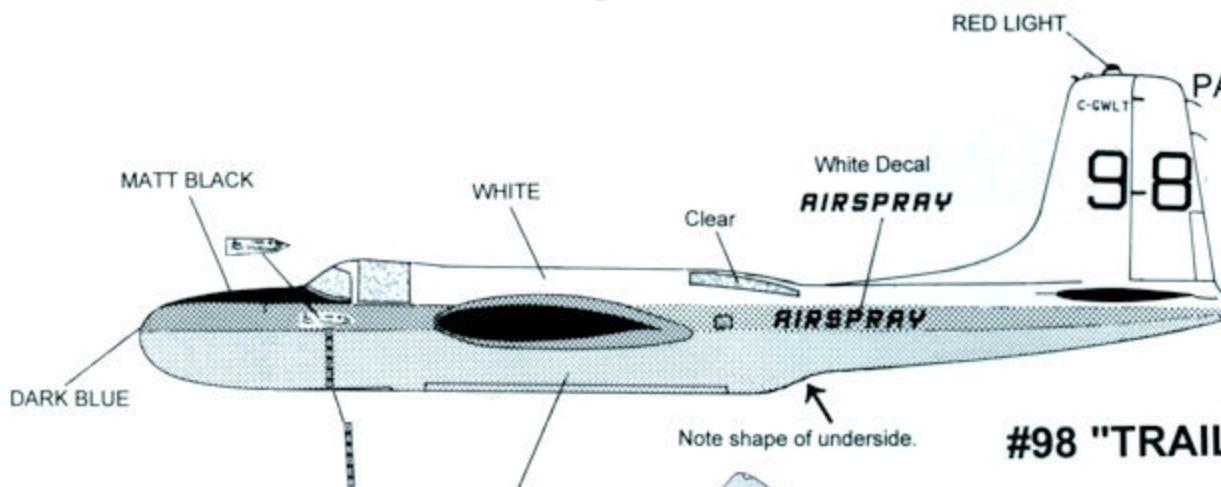


## #12 "SILVER FOX"



RED LIGHT



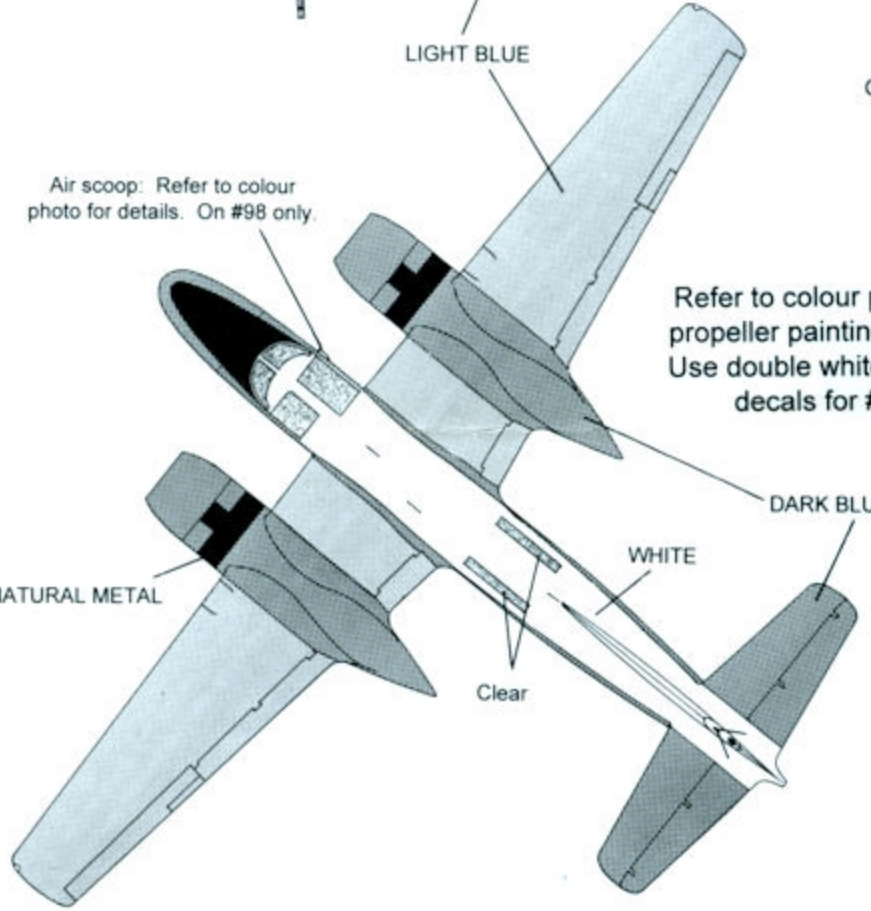


**PAINTING NOTES FOR ALL THREE AIRCRAFT.**

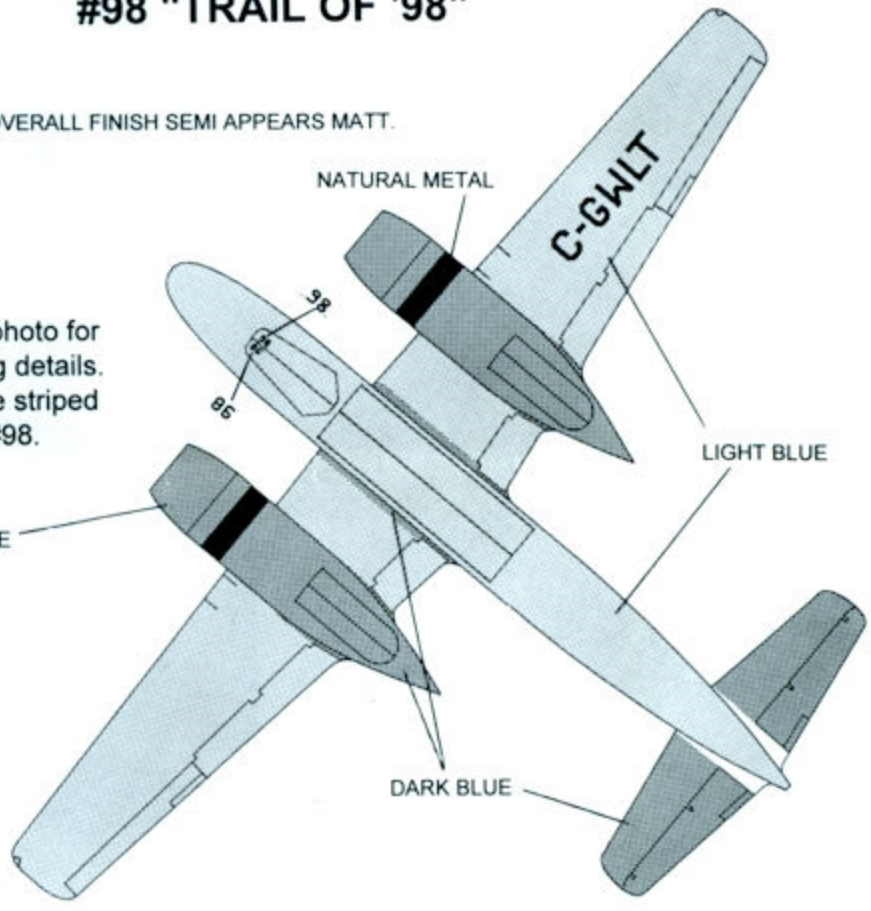
- Wheels: Gloss White
- Bomb Bays: Matt Black
- Wheel Wells: Aluminum Paint
- Engine: Gloss gray with unpainted cylinders.

**#98 "TRAIL OF '98"**

OVERALL FINISH SEMI APPEARS MATT.



Refer to colour photo for propeller painting details. Use double white striped decals for #98.



**AIR SPRAY:**

Air Spray Ltd. maintains it's aircraft in Red Deer, Alberta. Along with the 18 A-26 aircraft are 4 CL-215's and 4 L-188 Electra's plus 11 "Bird Dog" spotter aircraft. (1 Cessna 120, 5 Cessna 310, 1 Cessna 340, 3 Piper Aerostars and 1 Cessna 500 Citation.)

With the success of the operation and maintenance programs with the A-26 aircraft, it is possible that Air Spray may operate the A-26 for another 20 years.

LEADING EDGE MODELS  
 BAY E, 83 SKYLINE CRES. N.E.  
 CALGARY, AB  
 T2K 5X2  
 CANADA

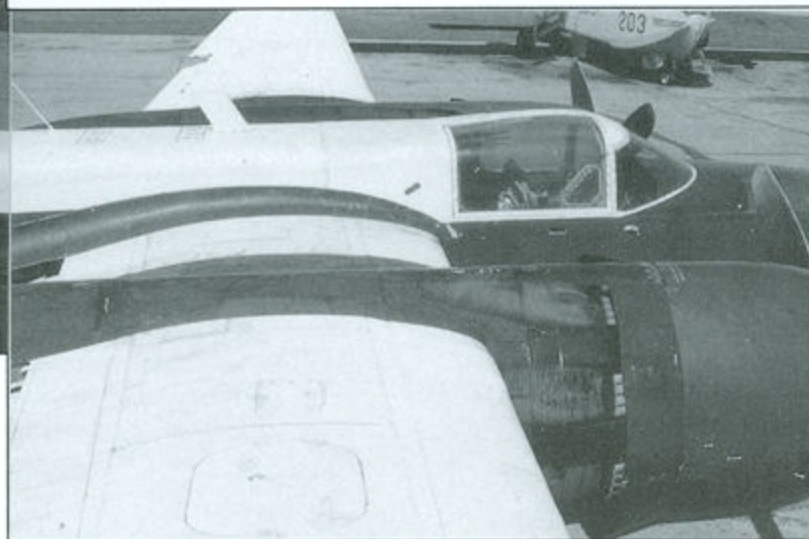
© 1995 LEADING EDGE MODELS



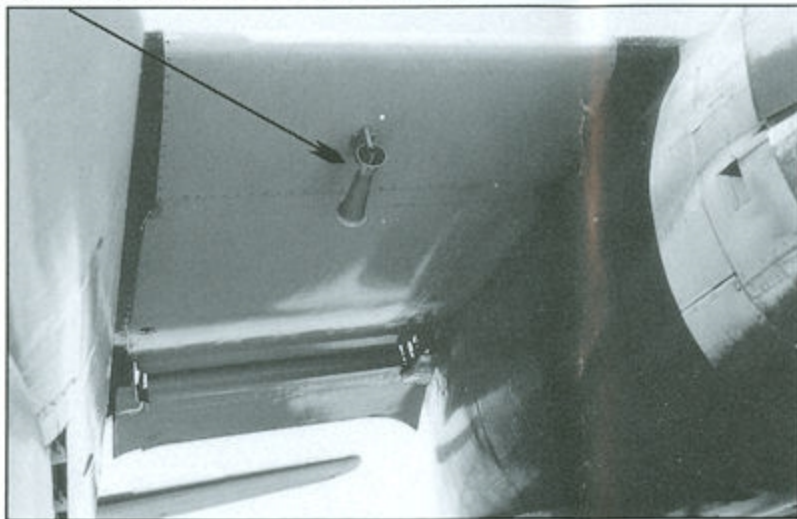
Window



#98 "Trail of '98" A26

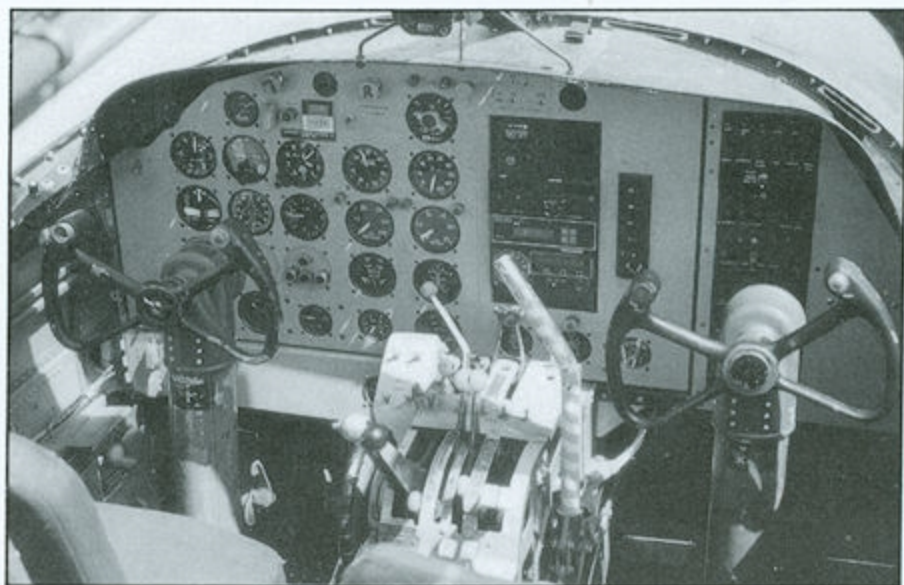


Note venturi located on left wing.



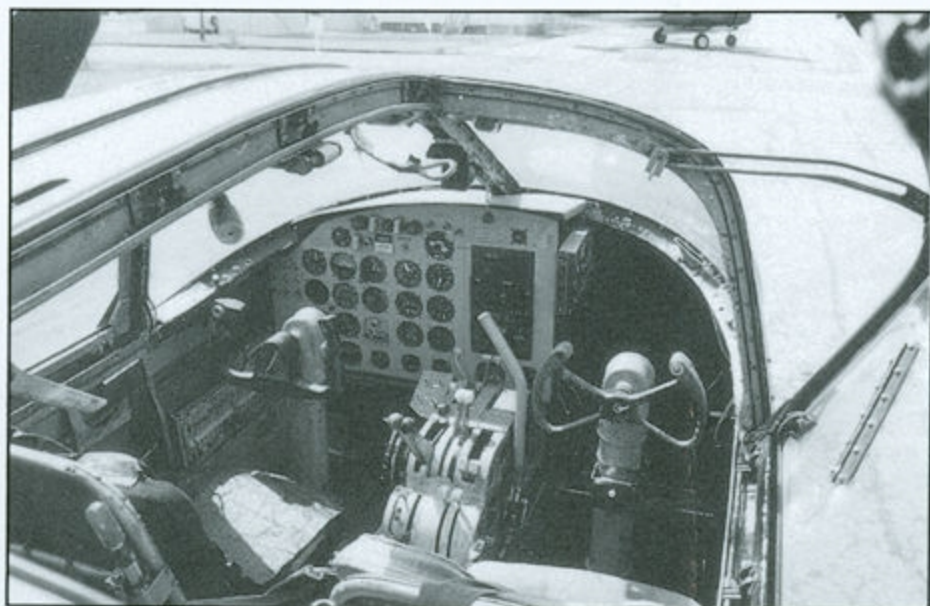
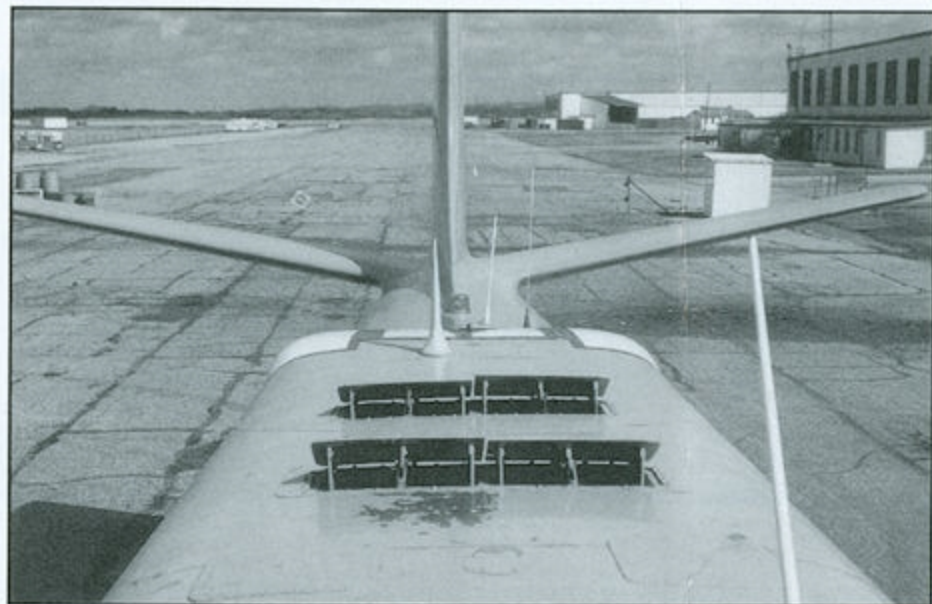
Interior: Entire cockpit chromate green except  
 gray instrument panel and console.  
 Red/white release handle.  
 Grayish brown seat cushion.  
 Rear bulkhead details same as #2 except  
 painted chromate green



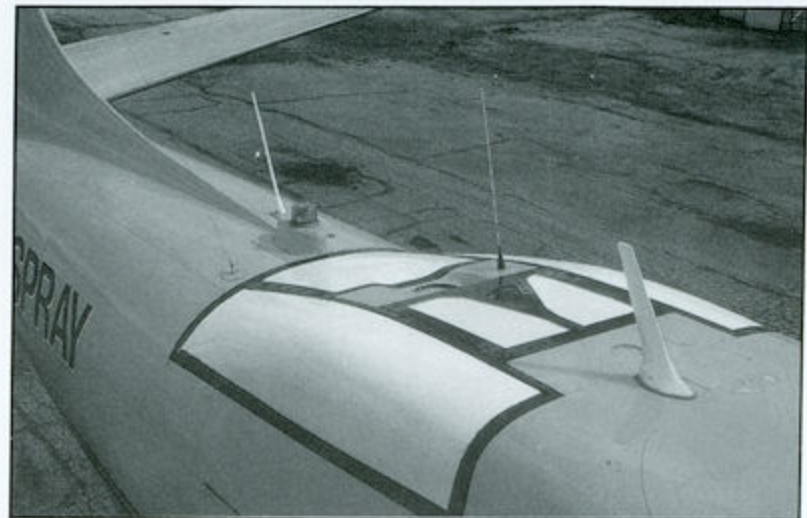




#2 "Holy Smoke" A26







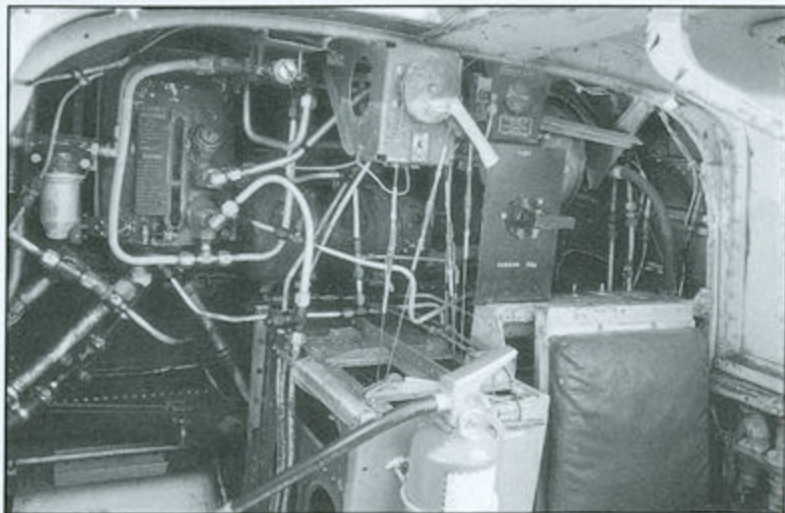
Note venturi on right wing. Same location for #12.

Interior: Gray except chromate green rear bulkhead and fuselage skin. Seat cushions black. Note third seat behind pilot's seat.

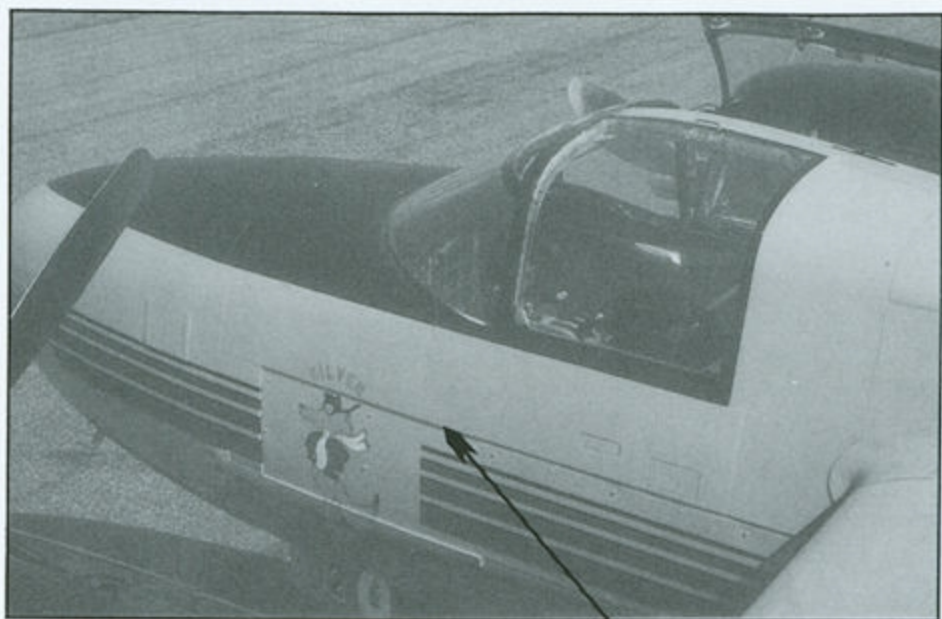


#2 has a fixed ladder that does not retract into fuselage.

Note beacon locations on #2 and #12 are different.



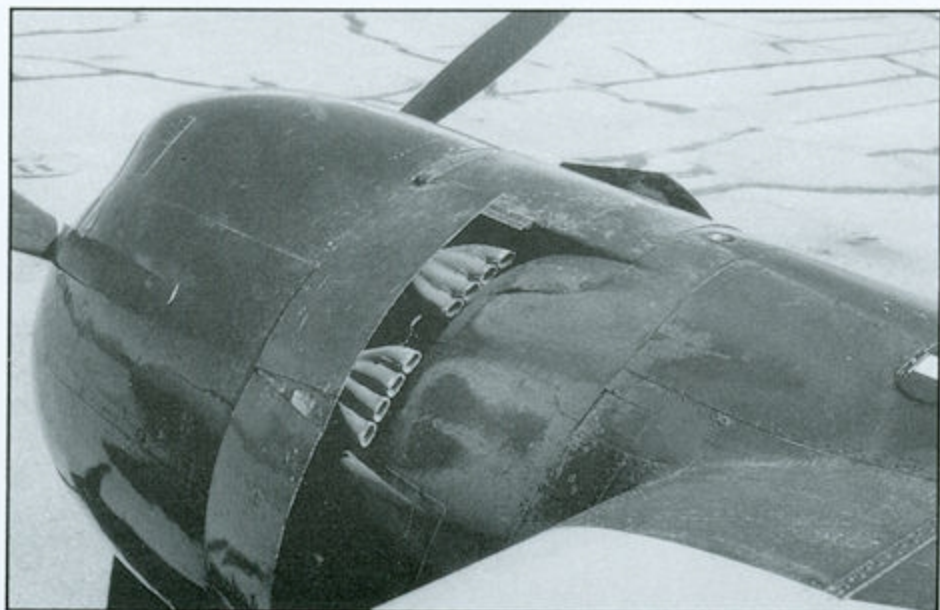




**Note different thickness panels.**

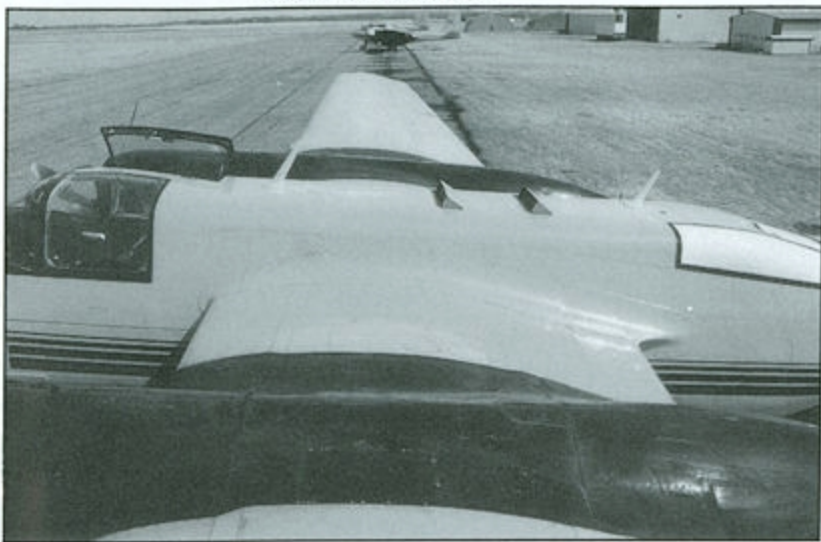


**Note light mounted in window.**

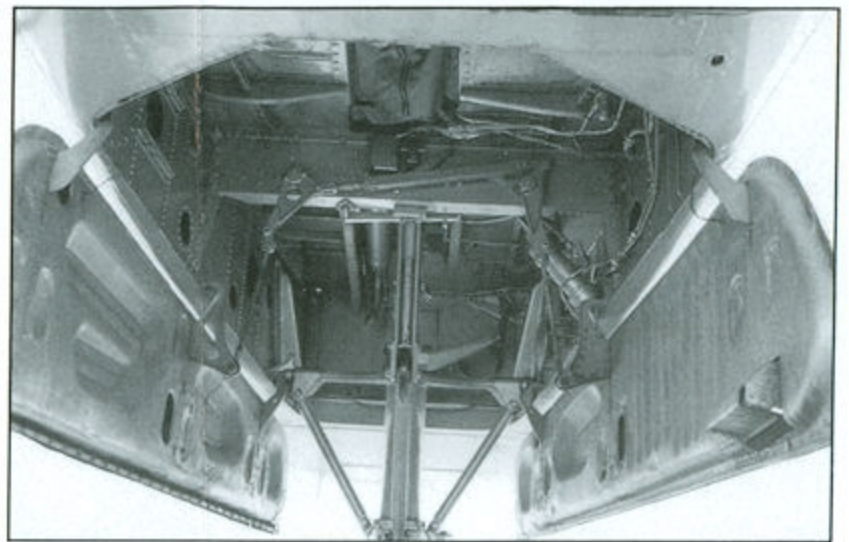




Note roof vents.



#12 "Silver Fox" A26



Interior: Single seat only. Black cushion. Matt black interior except gray instrument panel, console and rear bulkhead and details.

