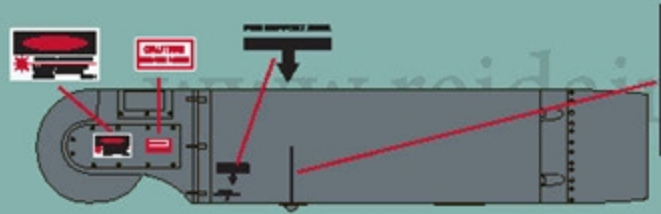


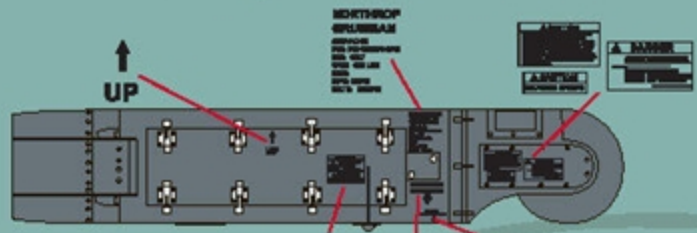
www.reidairpublishing.com



- 1. PUSH BUTTON TO OPEN DOOR
- 2. PULL RING OUT 6 FEET TO JETTISON CANOPY

Notice very slight difference in font between 'A' above and 'B' below

- 1. PUSH BUTTON TO OPEN DOOR
- 2. PULL RING OUT 6 FEET TO JETTISON CANOPY

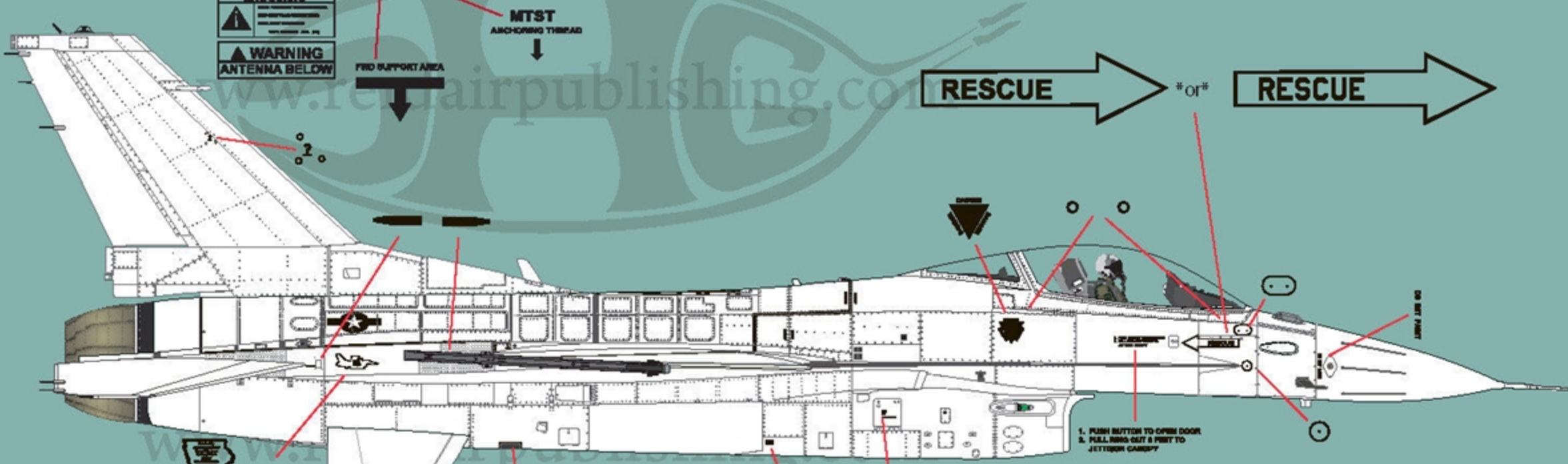
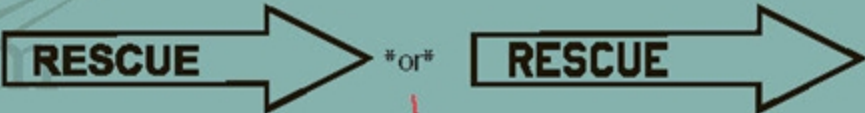


WARNING
DO NOT OPERATE
THIS SYSTEM
WHILE THE AIRCRAFT
IS IN FLIGHT

WARNING
ANTENNA BELOW

MTST
ANCHORING THREAD

FWD SUPPORT AREA



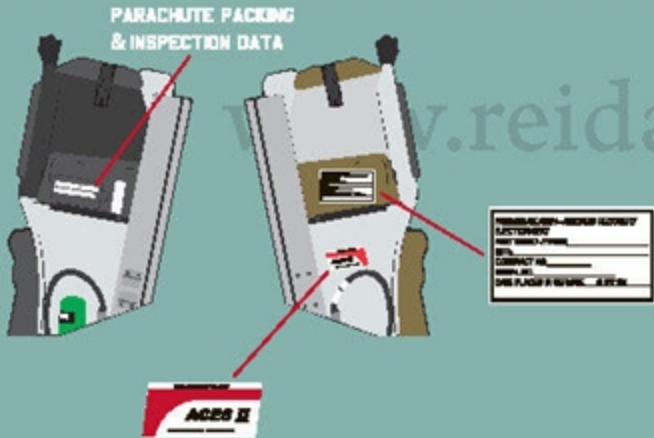
1. PUSH BUTTON TO OPEN DOOR
2. PULL RING OUT 6 FEET TO JETTISON CANOPY



www.reidairpublishing.com

For the best and most thorough reference available on the F-16s featured on this sheet, consult your copy of The Modern Viper Guide, 2nd Edition: The F-16 C/D Exposed. No part of the F-16 is left unexplored in this book, offering photos and info not available anywhere else. Covers both USAF and export F-16s. Available at the Reid Air Publications website!!!

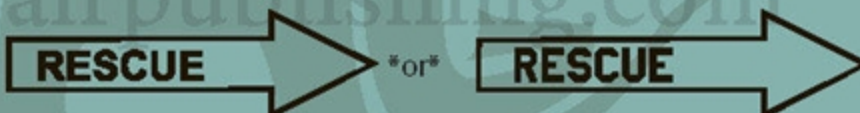




Decals are provided for the kit ejection seat. Each seat has its serial number, in most cases, painted onto each side of the seat. Typically, the ACES II logo will only be on the right side of the seat, as the FLCS box is mounted to the left side on the F-16C and front seat of the F-16D. The aft seat in the F-16D has no FLCS box, so ACES II logos are on each side of the seat.



canopy calibration chart goes on INSIDE canopy in front left corner. See The Modern Viper Guide for exact placement and details.



CLIMB LOCK
SAFETY ADDRESS

DO NOT PAINT

1. PUSH BUTTON TO OPEN DOOR
2. PULL RING OUT 6 FEET TO JETTISON CANOPY

1. PUSH BUTTON TO OPEN DOOR
2. PULL RING OUT 6 FEET TO JETTISON CANOPY

Notice very slight difference in font between 'A' above and 'B' below

1. PUSH BUTTON TO OPEN DOOR
2. PULL RING OUT 6 FEET TO JETTISON CANOPY

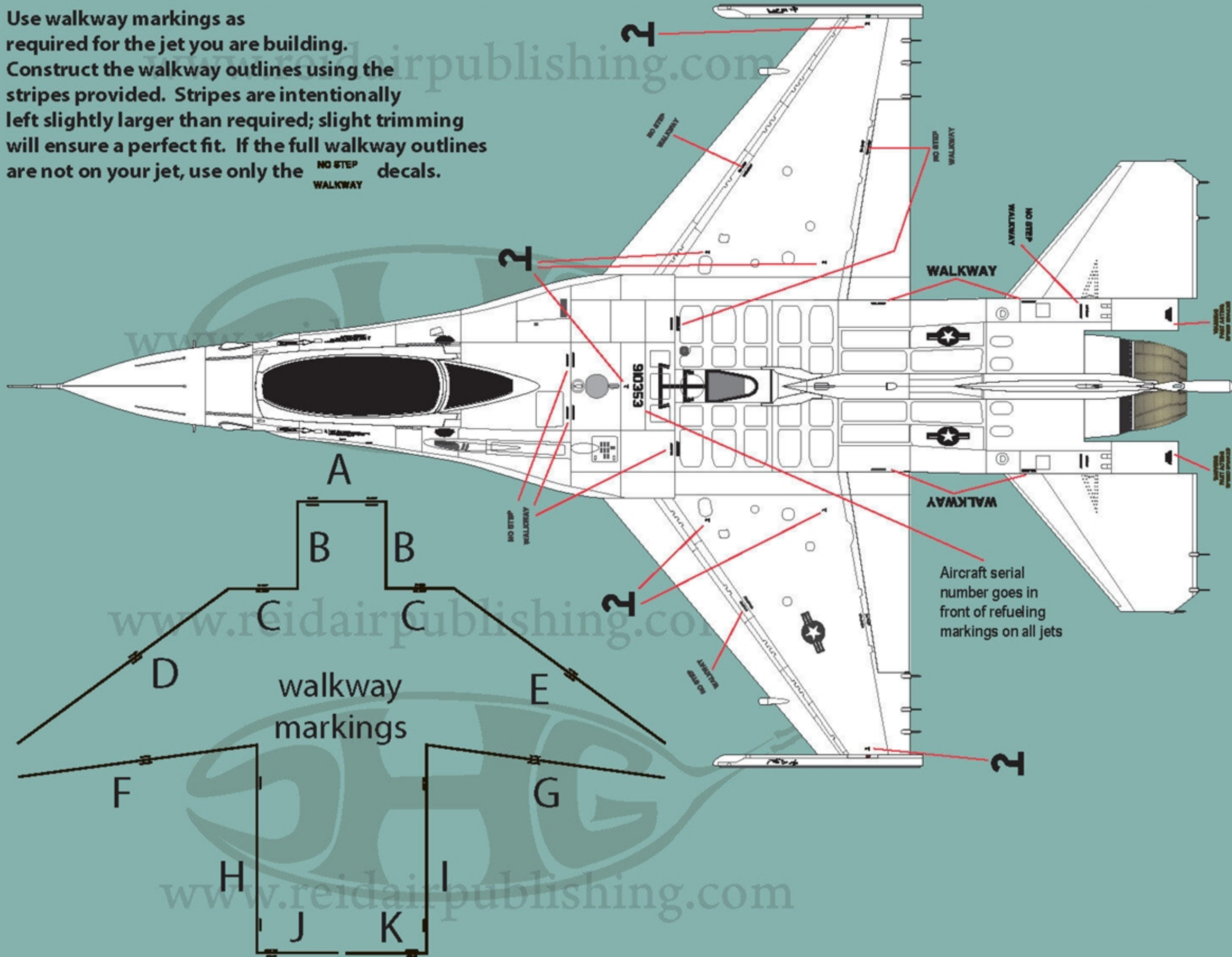


multiple serial numbers are provided, in black and light gray for standard or dark gray Station 3/7 pylons

For the best and most thorough reference available on the F-16s featured on this sheet, consult your copy of The Modern Viper Guide, 2nd Edition: The F-16 C/D Exposed. No part of the F-16 is left unexplored in this book, offering photos and info not available anywhere else. Covers both USAF and export F-16s. Available at the Reid Air Publications website!!



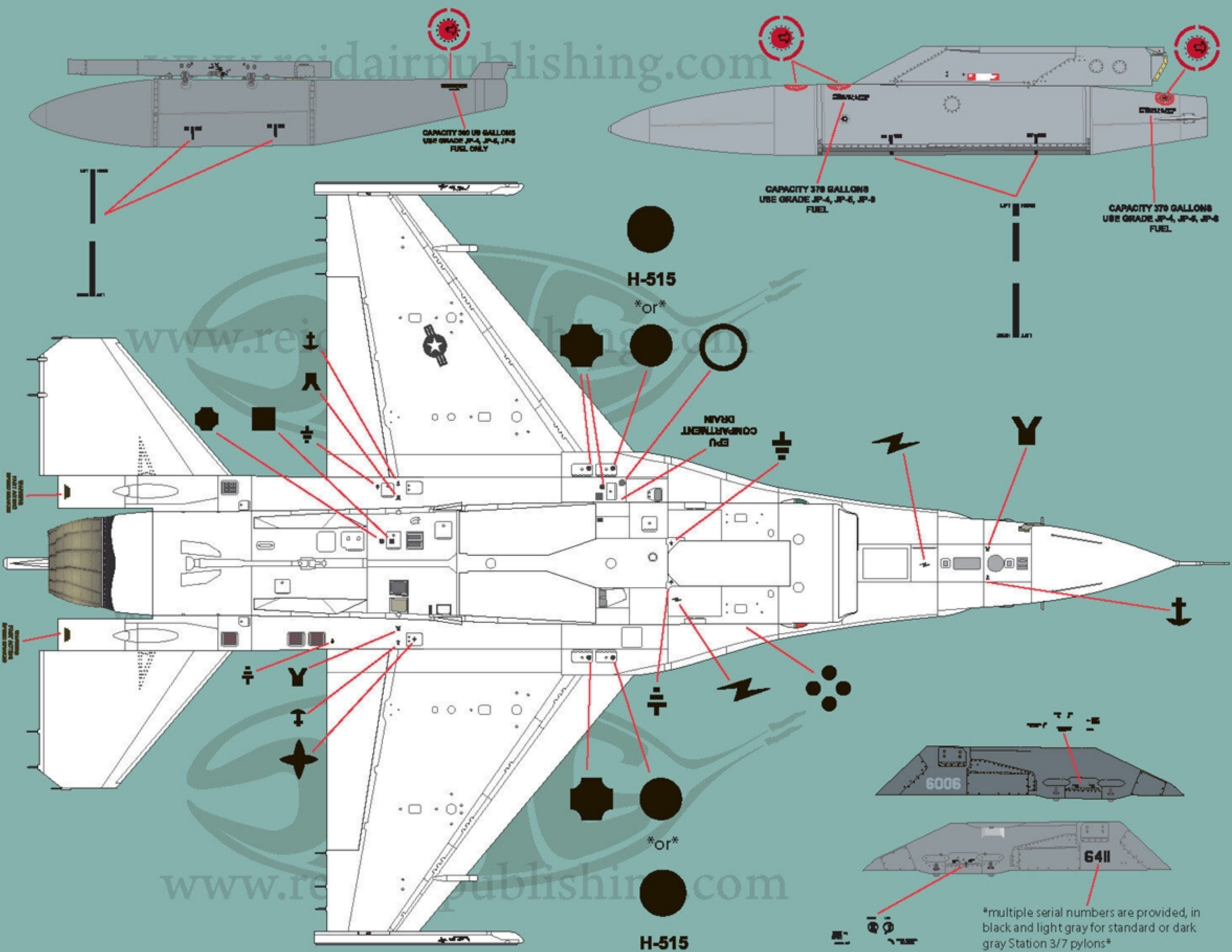
Use walkway markings as required for the jet you are building. Construct the walkway outlines using the stripes provided. Stripes are intentionally left slightly larger than required; slight trimming will ensure a perfect fit. If the full walkway outlines are not on your jet, use only the **NO STEP WALKWAY** decals.



walkway markings

Aircraft serial number goes in front of refueling markings on all jets

www.reidairpublishing.com





Beginning in 2011, a few test jets assigned to the 412th Test Wing at Edwards AFB, California, were painted in an experimental new color scheme. Having worn the standard three-tone camouflage pattern, then slightly modified into a two-color camouflage scheme, since its debut in 1978, the F-16 was given an overall dark gray scheme. Known as '5th Generation Have Glass,' the dark gray is very similar to the gray used on the F-35. For the most part, the new scheme has proven to be a success, and has (very) slowly been adopted for fleet-wide use. Initially, the markings on these jets were in FS36270 Neutral Gray. For several years, the various paint shops painting these machines did indeed use 36270 or whatever other gray they had available similar to 36270. However, by 2019, the official Technical Order for the new scheme has been changed to FS36375 Light Ghost Gray, and this now seems to be very standardized across all F-16s emerging from a fresh repaint into the new scheme.

