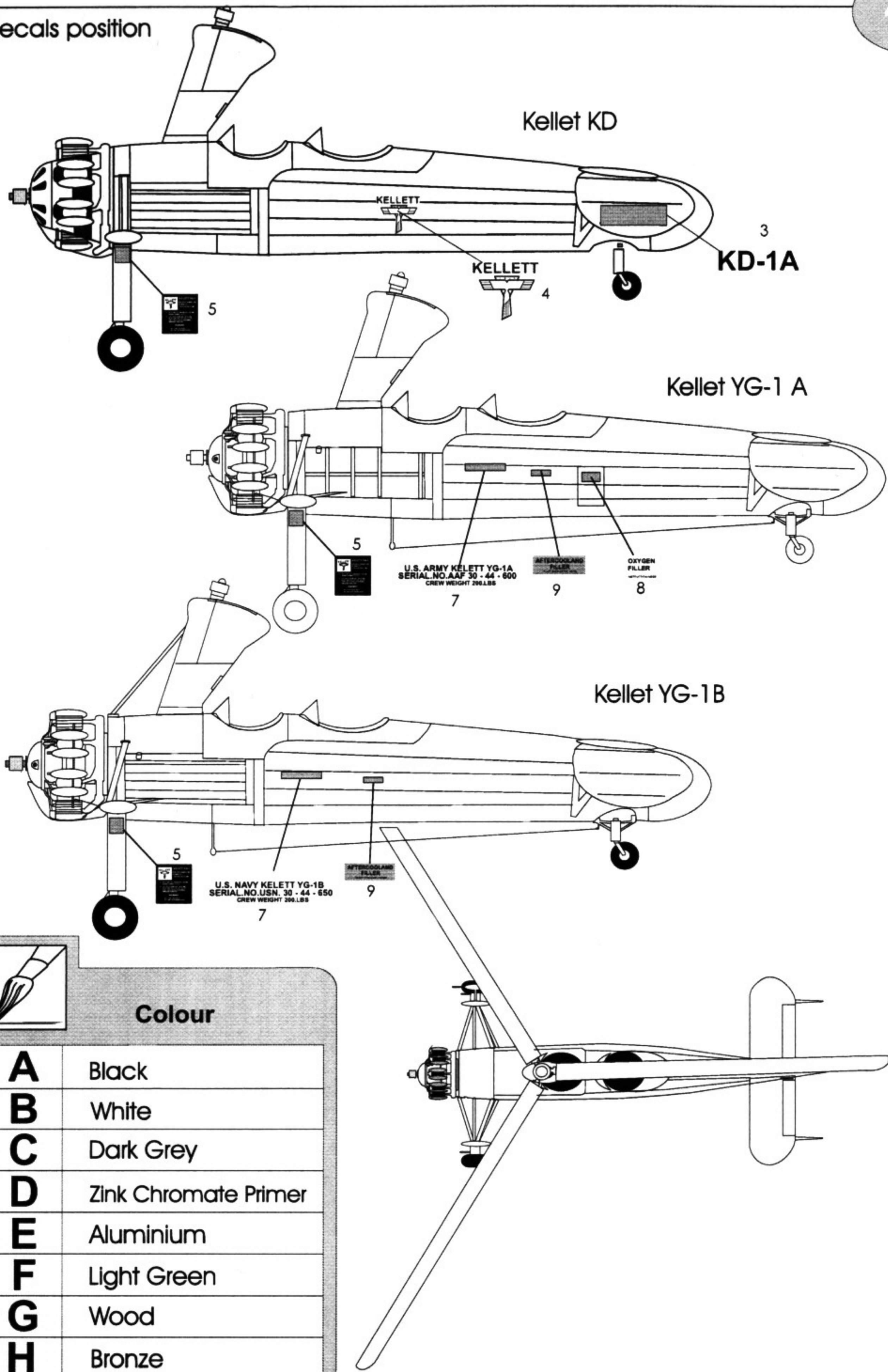


Decals position



Colour	
A	Black
B	White
C	Dark Grey
D	Zink Chromate Primer
E	Aluminium
F	Light Green
G	Wood
H	Bronze

AZmodel
Plastic kits

Kellet YG-1A/B

U.S. Autogyro

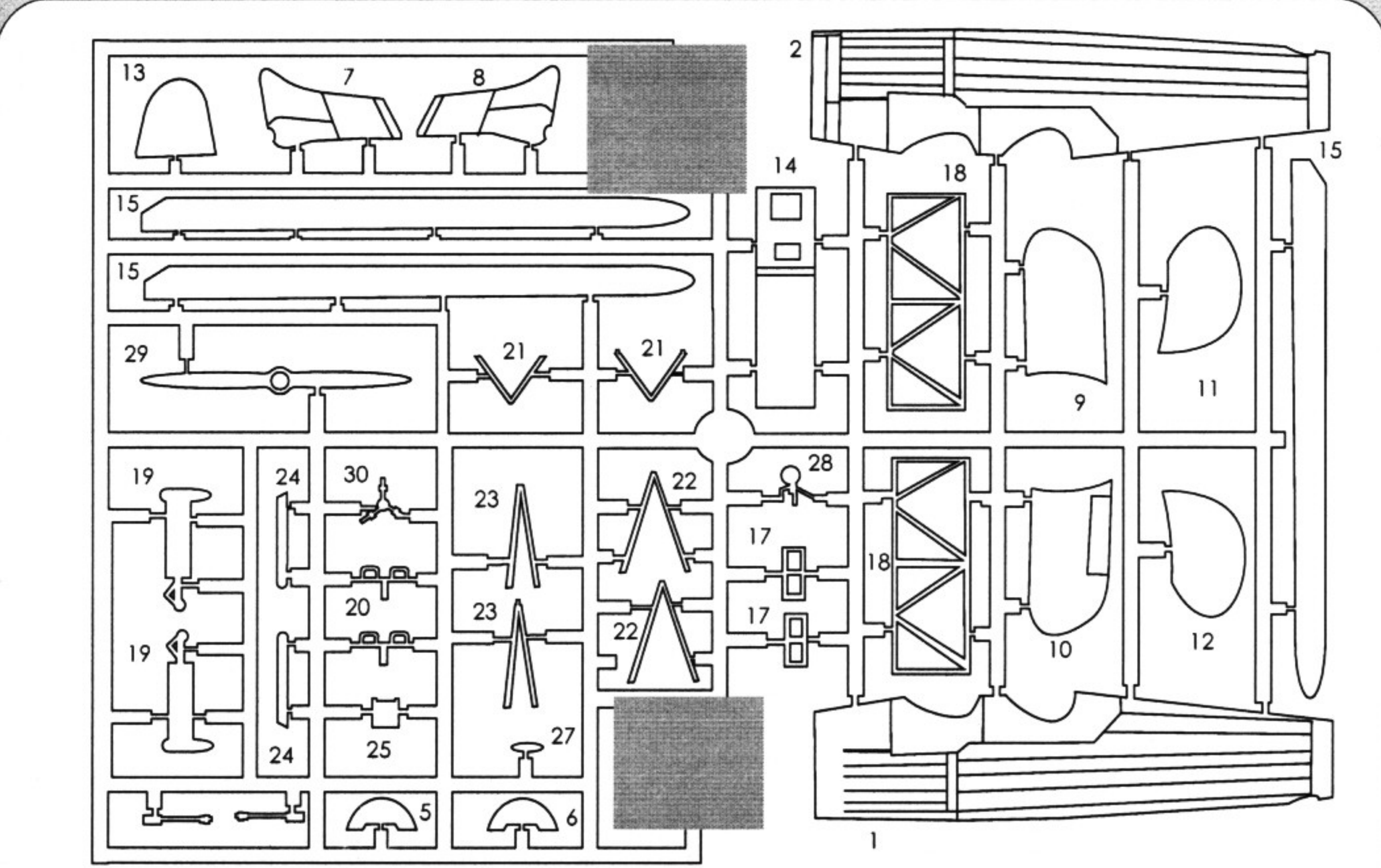
PLASTIC MODEL

AZ 4829

SCALE : 1/72

The Kellett KD-1 was a 1930s American autogyro built by the Kellett Autogyro Company. It had the distinction of being the first practical rotary-wing aircraft used by the United States Army and inaugurated the first scheduled air-mail service using a rotary-wing aircraft.

In 1935 the United States Army bought a KD-1 for evaluation and designated it the YG-1, a second aircraft followed which had additional radio equipment and was designated the YG-1A. These two aircraft were followed by a batch of seven designated YG-1B. In 1942 seven more were bought for use in the observation role as the XO-60. Six XO-60s were re-engined with 300hp (224kW) Jacobs R-915]]-3s and re-designated YO-60. One YG-1B was modified with a constant-speed rotor and was re-designated the YG-1C, it was later re-engined with the more powerful R-915 and re-designated again as the XR-2. The XR-2 was destroyed by rotor ground resonance problems and the evaluation was continued with another modified YG-1B designated the XR-3.



<p>Photo-Etched parts</p>	<p>PUR parts</p>	<p>Decals</p>	<p>Transparent parts</p>
---------------------------	------------------	---------------	--------------------------

<p>OPTIONAL VOLBA</p>	<p>BEND OHNOUT</p>	<p>OPEN HOLE VYVRTAT OTVOR</p>	<p>SYMMETRICAL ASSEMBLY SYMETRICKÁ MONTÁŽ</p>	<p>A NOTH ŽÁREZ</p>	<p>REMOVE ODRÍZNOUT</p>
---------------------------	------------------------	------------------------------------	---	-------------------------	-----------------------------

